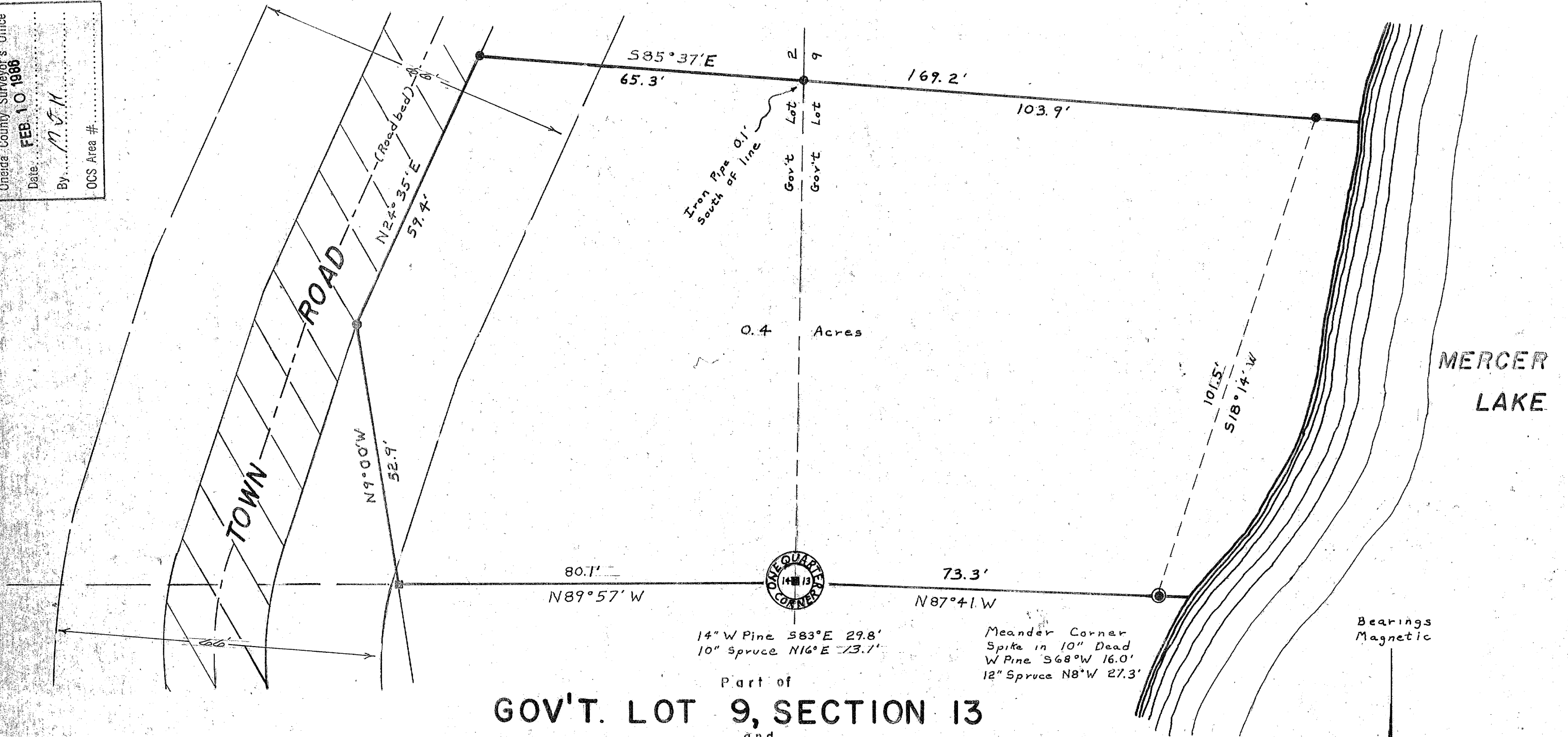


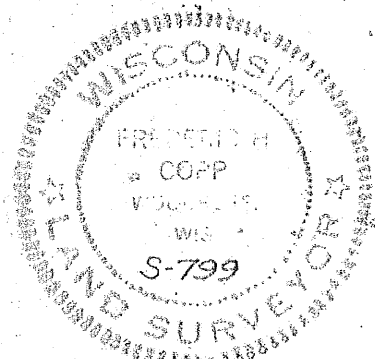
RECEIVED & FILED # A 92
 Oneida County Surveyor's Office
 Date FEB 10 1986
 By M J H
 OCS Area #



Part of
GOV'T. LOT 9, SECTION 13
 and
GOV'T. LOT 2, SECTION 14
T39N, R5E
 Oneida County, Wis.

■ = Concrete Monument Found in place
 ● = Iron pipe Found in place

Scale 1" = 20'
 May, 1970



Northwoods Surveyors Inc.
Frederic H. Comp
 Land Surveyor

A92