

AB927

AB927

BTS  
PR 11" - S68°E - 121.90'  
BW 8" - S31°E - 112.46'

# PARCEL SOLD TO ONEIDA CO. IN

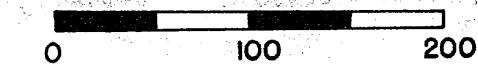
## T 38N, R 7E, ONEIDA CO. SEC. 3: PART OF GOVT. LOT 1 SCALE 1"=100' B.M.G. 5/24/76

E 1/8  
2" I.P. BRASS  
CAP

BTS  
PN 20" - N82°E -  
37.5'  
PW(STP) 20" -  
N 75°W - 24.7'

■ N 1/4  
6X6 CONC. W/ BRASS INSERT

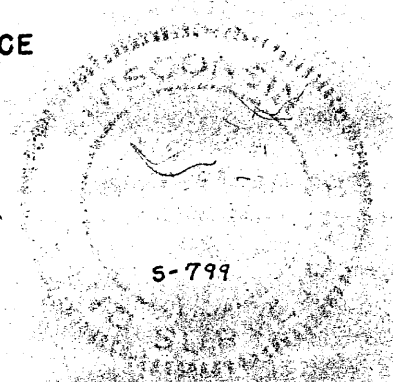
S 67°20'38"E  
874.94'



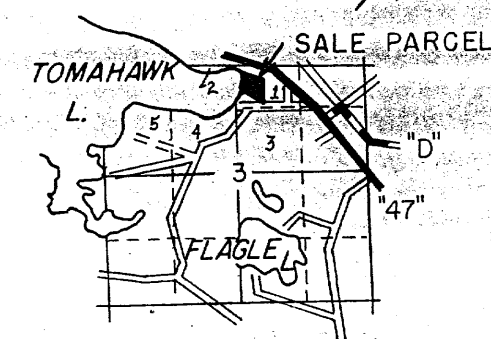
### LEGEND

- - MONUMENT SET
- - MONUMENT IN PLACE

± OF "47"



*F.H. Copp*



LOCATION DIAGRAM

PROPOSED SALE  
TO  
ONEIDA CO.

BTS  
PN 18" - N20°W - 50.0'  
MR 8" - S45°W - 18.6'

1" I.P.

TOMAHAWK  
LAKE

BOAT  
LANDING

(S 88°54'E)  
(201.82')

IRON PEGS

(BEARING & DISTANCES) = FROM DEED  
V.211, P459  
PLAT  
V.211, P460

(N 1°06'E) (95.63')  
(N 19°01'E, 158.14')  
(N 29°22'E) (96.23')

(S 50°45'E)  
(509.65')

N 0°45'00" W 576.20'  
346.20'  
230.00'

1" I.P.  
FLUSH W/ GROUND  
BTS  
PW 9" - S62°W - 6.7'  
PN 18" - N42°W - 9.05'  
BTS  
PN 18" - N56°W - 62.5'  
PN 24" - N16°W - 45.3'

MAP #	AB927
DATE FILED	FEB 09 2000
BY	<i>J.P.</i>
DESCRIPTION FILED	
ONEIDA CO. SURVEYOR'S OFFICE	

(WEST, 700' ±) 703.40'

IRON PEG

8.14 acres

81.49'  
N 89°27'18"W 1304.87'

520.00'

M.C.  
2" I.P. BRASS CAP

CHOATE ST.

BTS  
PS 27" - S42°E -  
34.9'  
BOLT HEAD IN  
P. POLE - S74°W -  
54.2'

NE 1/16  
2" I.P. BRASS CAP

N 0°45'00" W 917.99' (ILG = 918.51')

AB927