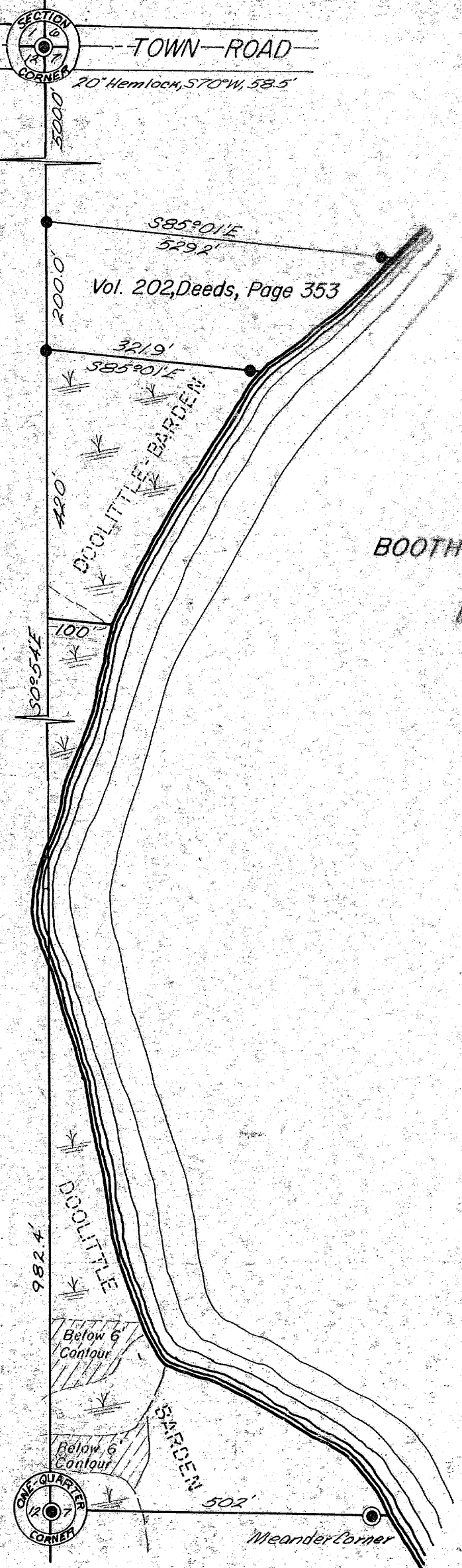


RECEIVED & FILED # **493**...
 Oneida County Surveyor's Office
 Date **FEB. 10 1966**
 By **MJH**
 OCS Area #.....



● = iron pipe found in place

8" Spruce N72°E 10.3'
 7" Maple S44°W 30.0'

Part of
GOV'T. LOT 1
SECTION 7, T39N, R5E
 Oneida County, Wis.

Scale 1" = 200'

Northwoods Surveyors, Inc.

William S. Cameron
 Land Surveyor

11 86V

April, 1970

J. Laasch