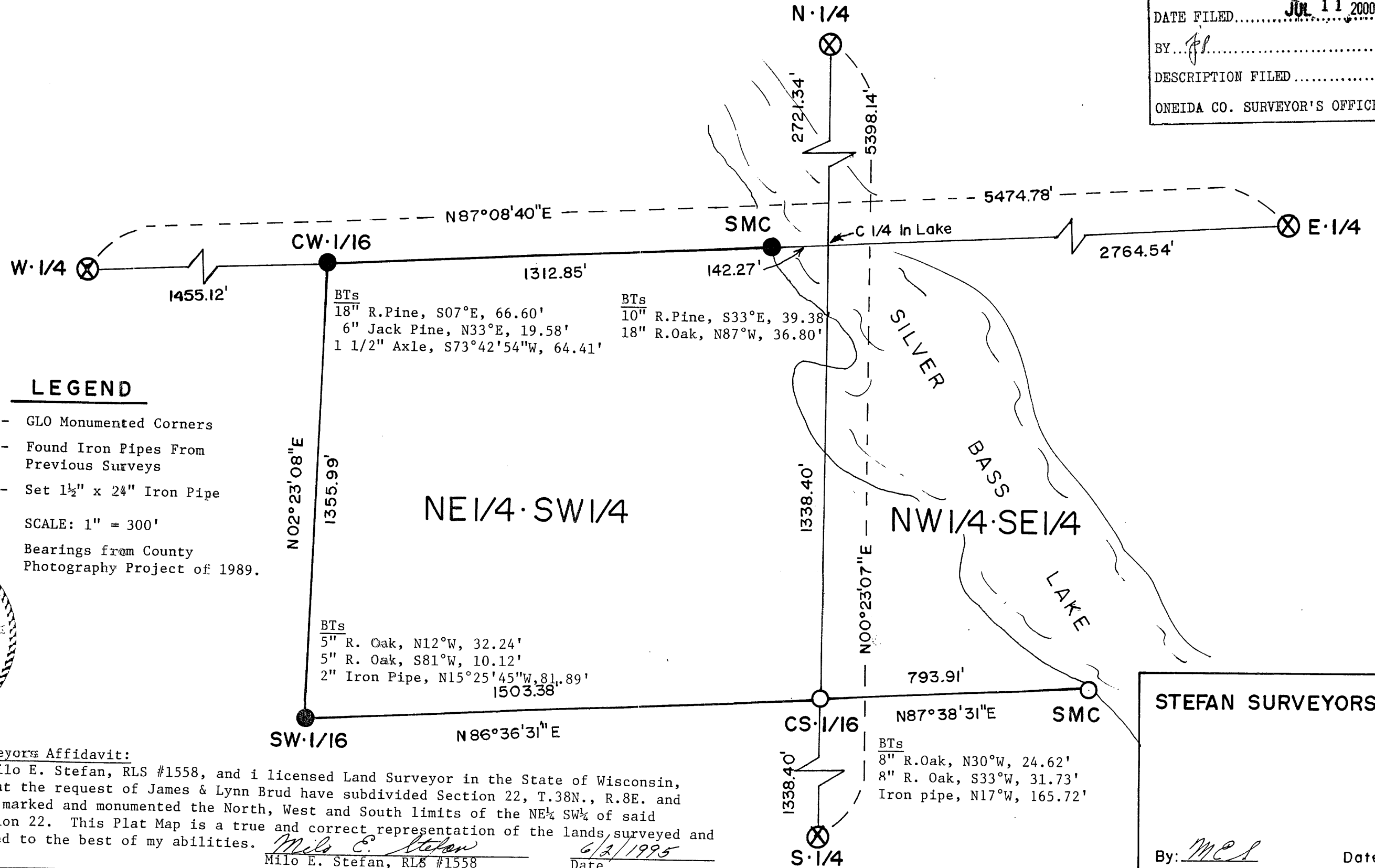


SURVEY FOR JAMES & LYNN BRUD

Being Part of the NW 1/4, SE 1/4 & the NE 1/4, SW 1/4, Section 22, T.37N., R.8E., 4th P.M.

MAP # **A0961**
 DATE FILED..... **JUL 11 2000**
 BY..... *fl*.....
 DESCRIPTION FILED.....
 ONEIDA CO. SURVEYOR'S OFFICE



LEGEND

- ⊗ - GLO Monumented Corners
- - Found Iron Pipes From Previous Surveys
- - Set 1 1/2" x 24" Iron Pipe

SCALE: 1" = 300'
 Bearings from County
 Photography Project of 1989.



Surveyors Affidavit:
 I, Milo E. Stefan, RLS #1558, and I licensed Land Surveyor in the State of Wisconsin, and at the request of James & Lynn Brud have subdivided Section 22, T.38N., R.8E. and have marked and monumented the North, West and South limits of the NE 1/4 SW 1/4 of said Section 22. This Plat Map is a true and correct representation of the lands surveyed and marked to the best of my abilities.
Milo E. Stefan
 Milo E. Stefan, RLS #1558 Date 6/2/1995

STEFAN SURVEYORS

By: *MES* Date 6/2/95

A0961

A0961

A0961

A0961