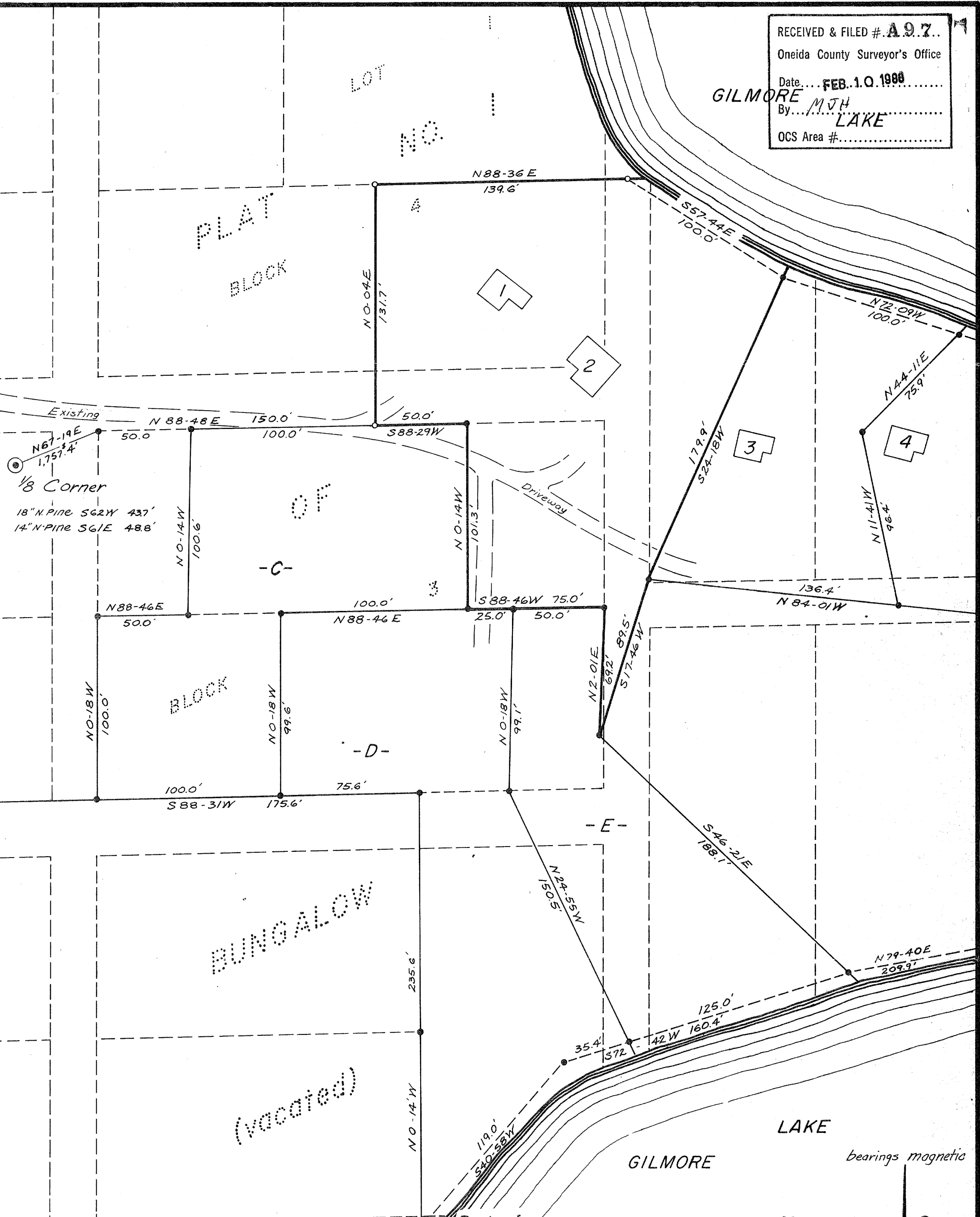


RECEIVED & FILED #. **A 9.7.**
 Oneida County Surveyor's Office
 Date... **FEB. 10. 1988**
 By... **M. J. H.**
LAKE
 OCS Area #.....



GOV'T. LOT 8
 SECTION 24, T39N, R7E

Oneida County, Wis.

HERBERT MOORE
 County Surveyor
 Oneida County, Wisconsin
 Courthouse
 Rhinelander, Wisconsin 54501

DEC 13 1987

154

Northwoods Surveyors, Inc.

William J. Cameron
 Land Surveyor

Scale 1" = 50'

268 August, 1971

314-24-392