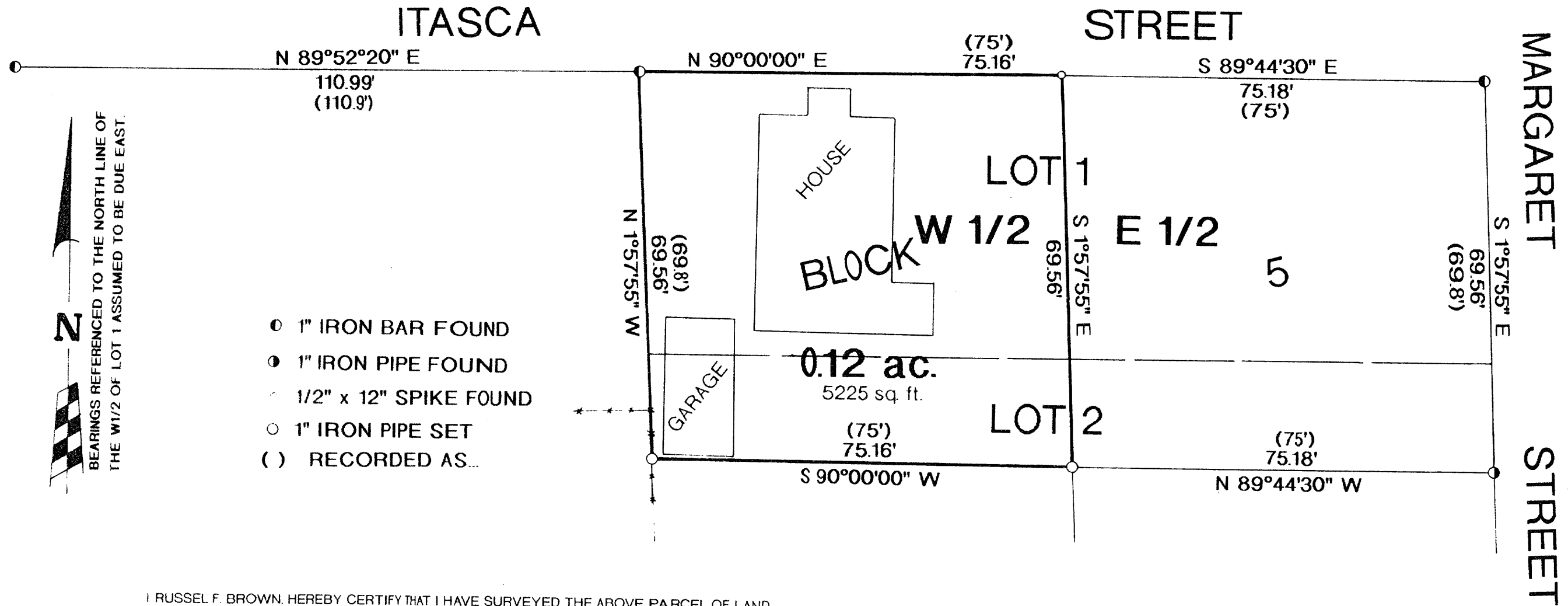


THE WEST 1/2 OF
LOTS 1 & 2, BLOCK 5, KEENAN'S FIRST ADD.
SECTION 6, T36N, R9E,
 ONEIDA COUNTY, WISCONSIN



I RUSSEL F. BROWN, HEREBY CERTIFY THAT I HAVE SURVEYED THE ABOVE PARCEL OF LAND UNDER THE DIRECTION OF MIKE MUELVOR, THAT THE ABOVE MAP IS A TRUE AND CORRECT REPRESENTATION OF THE LANDS SURVEYED TO THE BEST OF MY KNOWLEDGE AND BELIEF, AND THAT I HAVE COMPLIED WITH THE PROVISIONS OF A-E 7 OF THE WISCONSIN ADMINISTRATIVE CODE

P # **A0971**
 FILED.....**2000**.....
 AUG 25 2000
 DESCRIPTION FILED.....
 ONEIDA CO. SURVEYOR'S OFFICE

Russell F. Brown 6/30/00
 RUSSEL F BROWN DATE



SURVEY FOR MIKE MUELVOR	
SCALE: 1" = 20'	APPROVED BY:
DATE: 21JUN00	DRAWN BY: KAZ
REVISOR: 6/30/00	
GENISOT & ASSOCIATES INC.	