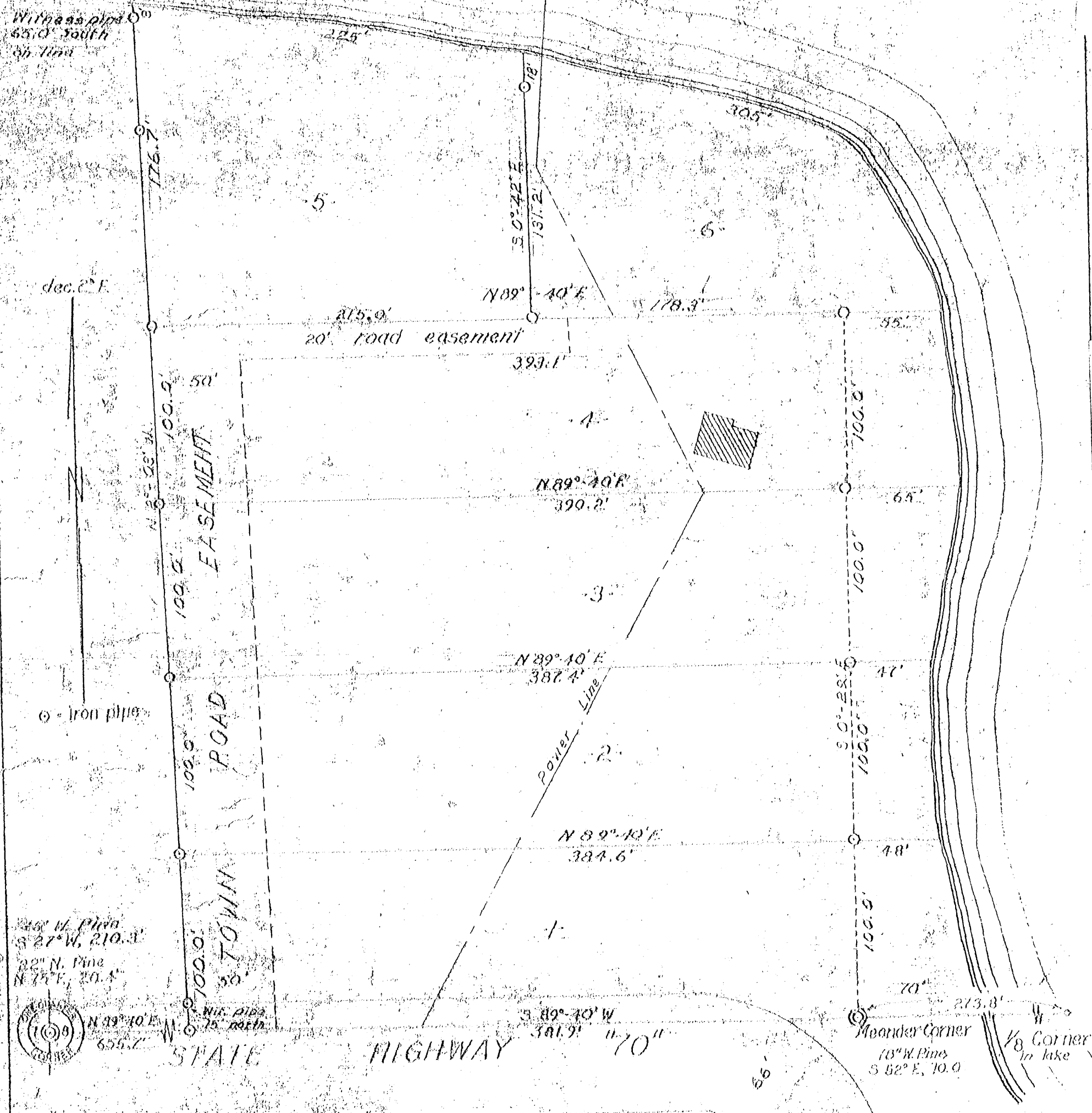


CURTIS

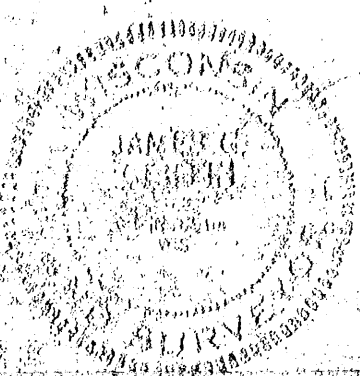
LAKE

MADE BY J.S.F.
J.S.F.
CHINA CO. SURVEYOR'S OFFICE



Part of
 SW 1/4 of the NW 1/4
 SECTION 8, T 39N, R 6E
 Oneida County, Wis.

Scale 1" = 60'
 November, 1962
 Revised: February, 1963



Northwoods Surveyors
 James G. Griffith
 LAND SURVEYOR

J. Fisher

55-256