

# TOWNSHIP 37 NORTH, RANGE 8 EAST OF THE FOURTH PRINCIPAL MERIDIAN, WISCONSIN

## SUBDIVISION OF LOT 11, SECTION 33

Survey was made in connection with the administration under the Small Tract Act

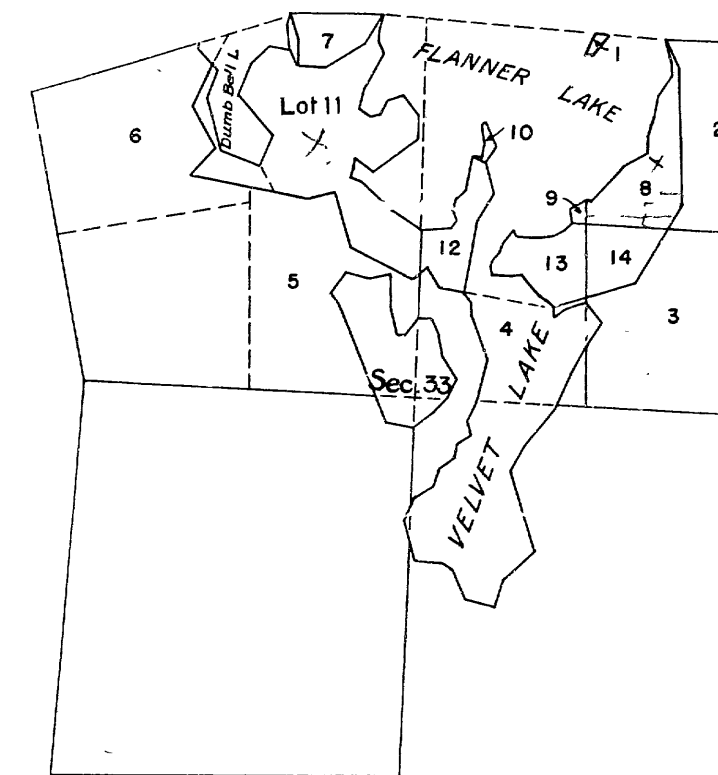
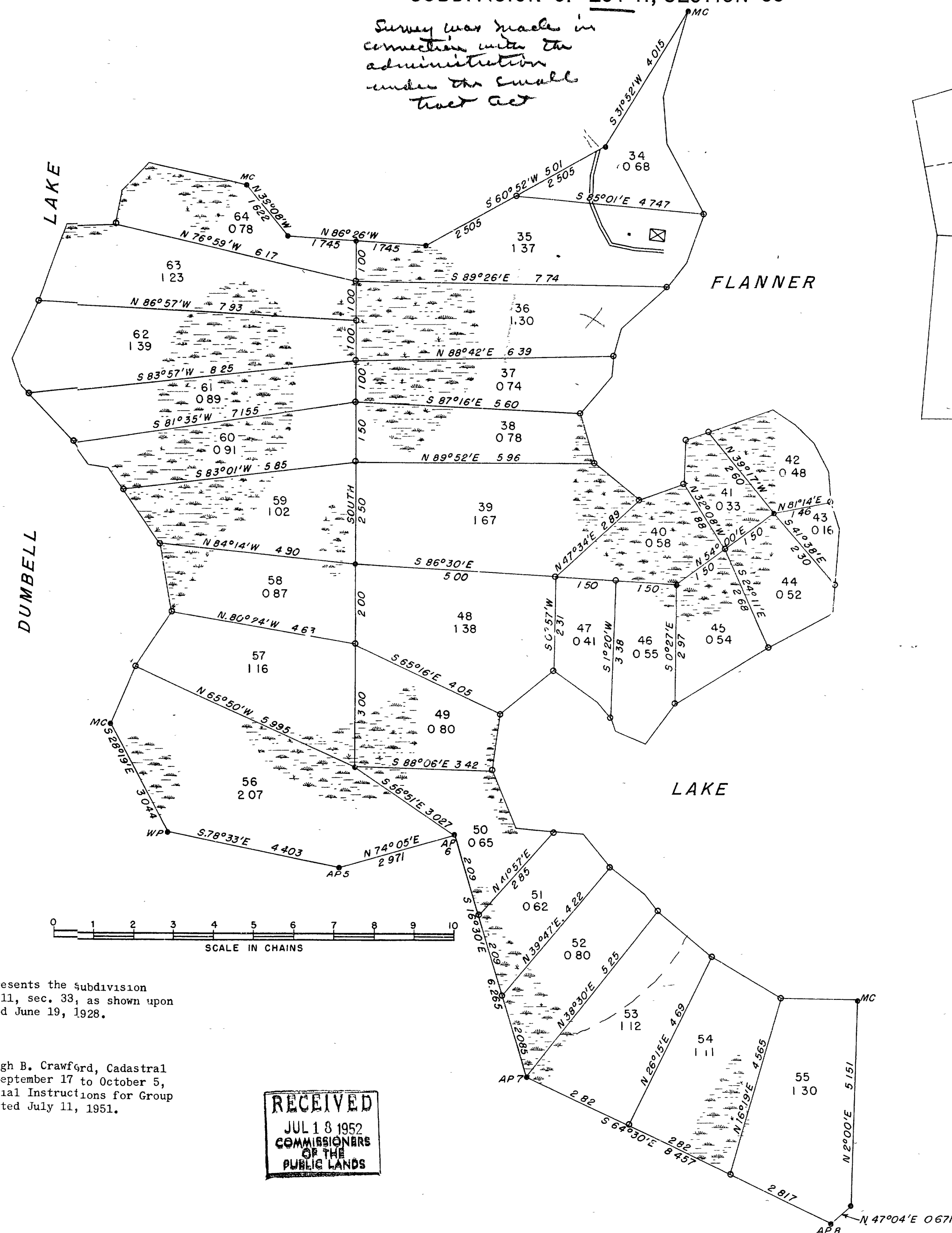
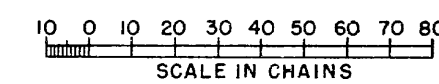


DIAGRAM OF SECTION 33



- = Regulation iron corner post, with brass cap.
  - o = Wooden stake, 4 ins. square, marked with lot numbers.
- Area resurveyed 28.21 acres

This plat represents the subdivision of original lot 11, sec. 33, as shown upon the plat accepted June 19, 1928.

Surveyed by Hugh B. Crawford, Cadastral Engineer, from September 17 to October 5, 1951, under Special Instructions for Group 64 Wisconsin, dated July 11, 1951.

RECEIVED  
JUL 18 1952  
COMMISSIONERS  
OF THE  
PUBLIC LANDS

UNITED STATES DEPARTMENT OF THE INTERIOR  
BUREAU OF LAND MANAGEMENT  
Washington, D.C., May 14, 1952

This plat is strictly conformable to the approved field notes, and the survey, having been correctly executed in accordance with the requirements of law and the regulations of this Bureau, is hereby accepted.

For the Director  
*William F. Richards*  
Chief, Branch of Surveys

RECEIVED & FILED #	13.1.0
Oneida County Surveyor's Office	
Date	.....
By	.....
OCS Area #	.....