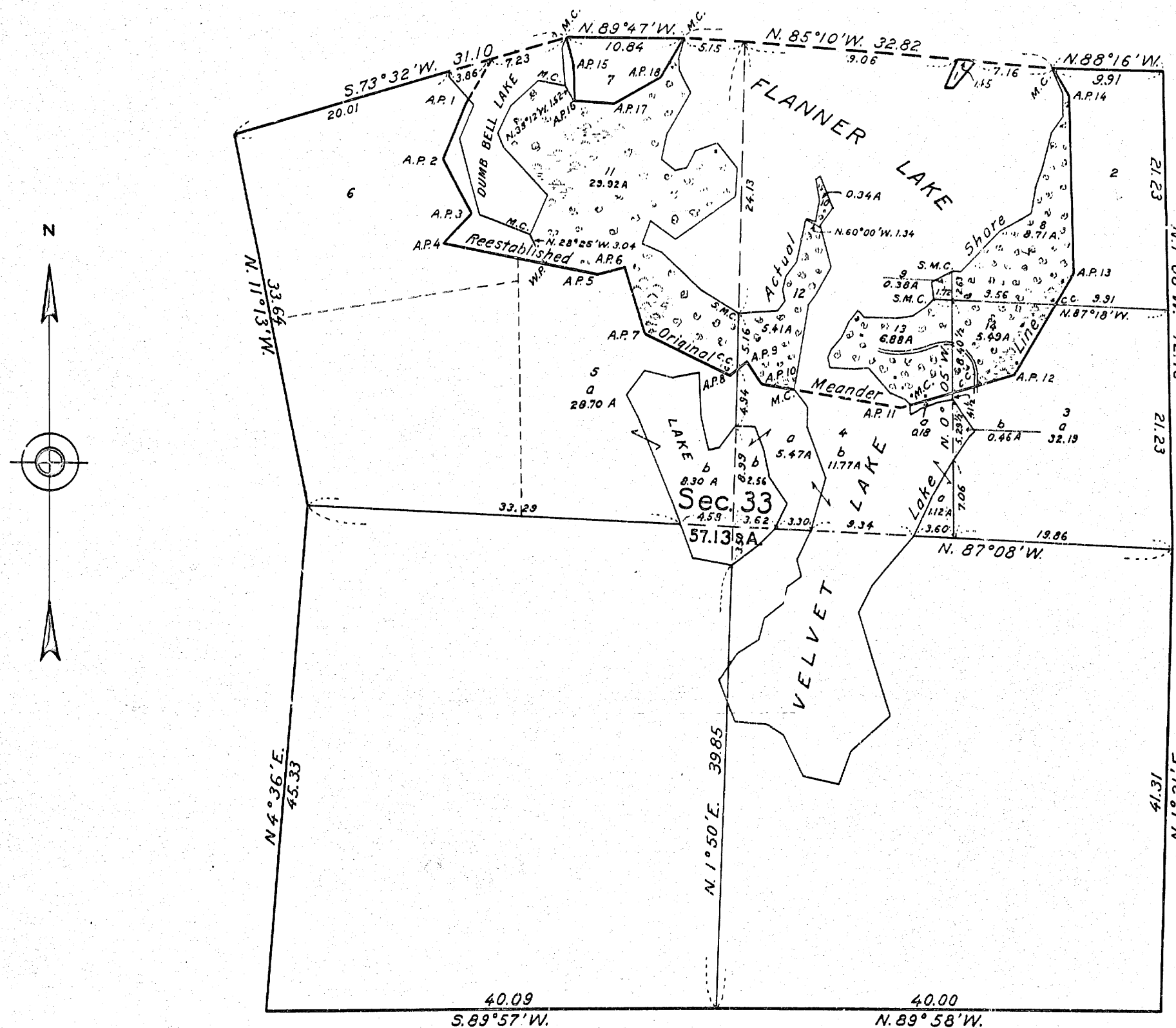


TOWNSHIP No. 37 NORTH, RANGE No. 8 EAST, OF THE 4<sup>TH</sup> PRINCIPAL MERIDIAN, WISCONSIN

SUPPLEMENTAL PLAT OF SECTION 33

Scale: 1 inch = 10 chains



MEMORANDUM

THIS PLAT IS BASED UPON A REESTABLISHMENT OF THE LINES DEFINING LANDS IN SEC. 33, T. 37 N., R. 8 E., 4TH PRIN. MER., WISCONSIN, AS SHOWN UPON THE OFFICIAL PLAT APPROVED MARCH 18, 1864, IN THEIR TRUE ORIGINAL POSITIONS ACCORDING TO THE BEST AVAILABLE EVIDENCE OF THE ORIGINAL CORNERS, AND UPON AN EXTENSION SURVEY INCLUDING PUBLIC LANDS NOT SHOWN ON SAID PLAT. THE ORIGINAL LINES HAVE BEEN IDENTIFIED AND THE ORIGINAL CORNERS REMONUMENTED WITH REGULATION IRON POSTS. ALL DIFFERENCES IN MEASUREMENT BETWEEN THOSE SHOWN ON THE ORIGINAL PLAT AND THOSE DERIVED IN RETRACEMENT HAVE BEEN DISTRIBUTED PROPORTIONALLY BETWEEN ACCEPTED CORNERS IN ACCORDANCE WITH SURVEYING RULES.

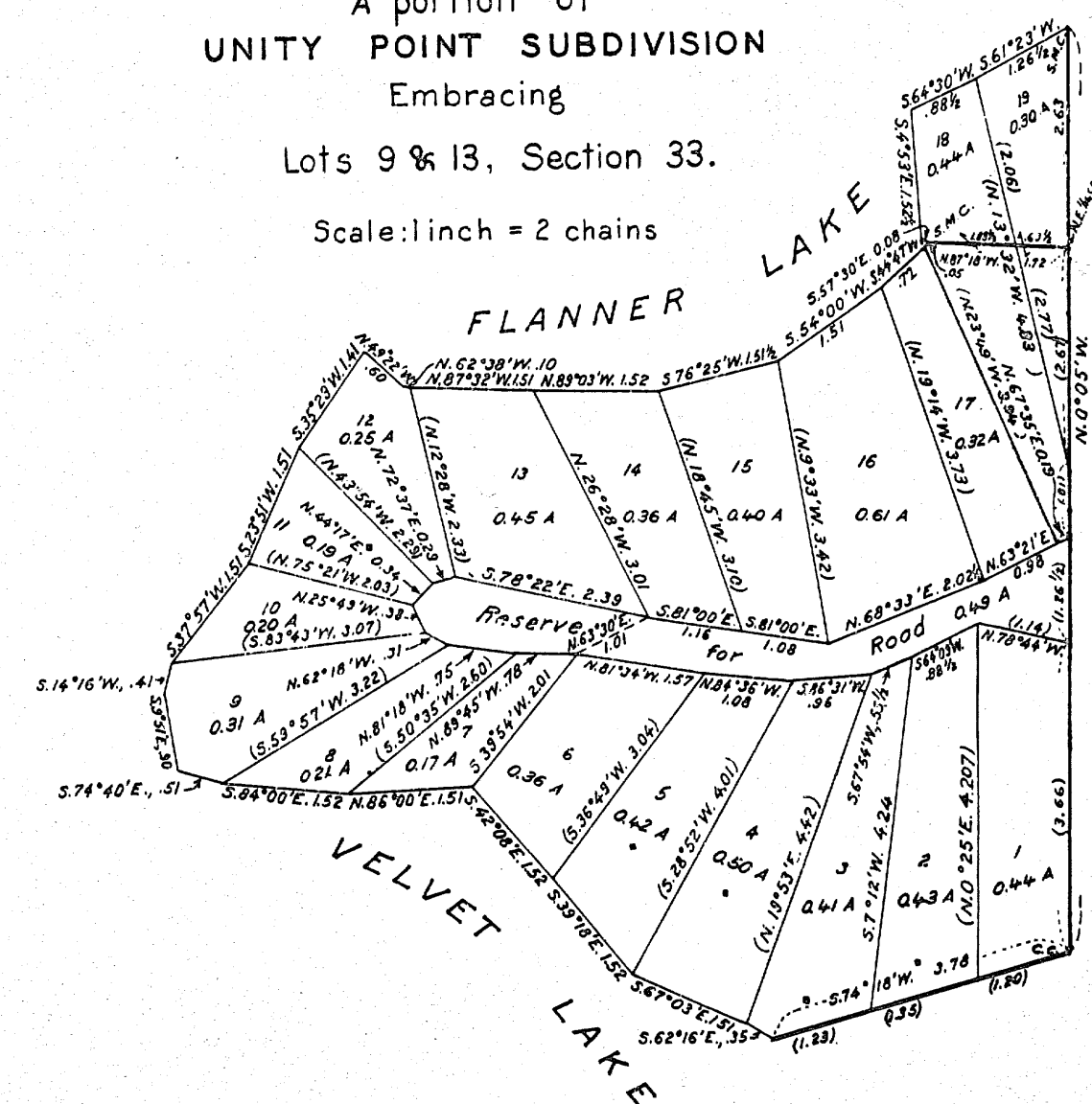
THE HEAVY IRREGULAR LINE DELINEATES THE POSITION OF THE MEANDER LINE OF A LAKE IN SEC. 33 AS REPRESENTED ON THE PLAT OF THE ORIGINAL SURVEY. PORTIONS OF THIS MEANDER LINE WERE ERRONEOUSLY SURVEYED AND THESE PORTIONS HAVE BEEN REESTABLISHED AS A FIXED LIMITING BOUNDARY OF THE ORIGINAL SUBDIVISIONS ADJACENT THERETO, WITH ADJUSTED COURSES AND DISTANCES BASED UPON THE RECORD OF THE ORIGINAL SURVEY.

ALL SUBDIVISIONS SHOWN ON THE ORIGINAL PLAT REMAIN UNDISTURBED FOR POSITION AND DESCRIPTION. THE AREAS OF ORIGINAL LOTS 3, 4 AND 5 ARE SHOWN IN TWO PARTS: "A" DENOTING LAND AREA AND "B" DENOTING WATER AREA. THESE "A" AND "B" AREAS ARE COMPUTED PROPORTIONALLY, ACCORDING TO THE TOTAL AREAS OF THE ORIGINAL SUBDIVISIONS.

LOTS 8, 9, 13 AND 14 ARE INVADDED BY A LOCAL SUBDIVISION KNOWN AS "UNITY POINT." SEE INSERT DIAGRAM FOR SHOWING OF POSITION OF LOTS IN THAT SUBDIVISION.

A portion of  
UNITY POINT SUBDIVISION  
Embracing  
Lots 9 & 13, Section 33.

Scale: 1 inch = 2 chains



MEMORANDUM

DISTANCES AND BEARINGS SHOWN IN PARENTHESES ARE COMPUTED.  
ALL LOT CORNERS ARE MARKED WITH WOODEN STAKES, 1 X 6 INCHES, 6 INCHES ABOVE GROUND, PAINTED WHITE, WITH THE LOT NUMBERS STENCILED THEREON.  
THIS DIAGRAM AFFORDS A BASIS FOR THE DISPOSAL OF THE PUBLIC LAND AREA OF THE LOTS OF UNITY POINT SUBDIVISION, IN LOTS 9 & 13, SEC. 33.

LEGEND

SURVEYED BY EARL G. HARRINGTON, U. S. CADASTRAL ENGINEER, FROM SEPT. 14 TO 26, 1927, INCLUSIVE, UNDER SUPPLEMENTAL SPECIAL INSTRUCTIONS FOR GROUP NO. 14, WISCONSIN, DATED AUGUST 30, 1927, ISSUED BY THE TECHNICAL ASSISTANT TO THE SUPERVISOR OF SURVEYS, WHICH WERE APPROVED BY THE COMMISSIONER OF THE GENERAL LAND OFFICE ON SEPT. 7, 1927.

OFFICE OF U. S. SUPERVISOR OF SURVEYS,  
DENVER, COLORADO. APRIL 23, 1928.

THE ABOVE SUPPLEMENTAL PLAT OF SECTION 33, TOWNSHIP NO. 37 NORTH, RANGE NO. 8 EAST OF THE 4TH PRINCIPAL MERIDIAN, IN THE STATE OF WISCONSIN, IS STRICTLY CONFORMABLE TO THE FIELD NOTES OF THE SURVEY THEREOF, WHICH HAVE BEEN EXAMINED AND APPROVED.

*Earl G. Harrington*  
U. S. SUPERVISOR OF SURVEYS.

DEPARTMENT OF THE INTERIOR  
GENERAL LAND OFFICE  
WASHINGTON, D. C., JUNE 19, 1928.

THE SURVEY REPRESENTED BY THIS PLAT, HAVING BEEN CORRECTLY EXECUTED IN ACCORDANCE WITH THE REQUIREMENTS OF LAW AND THE REGULATIONS OF THIS OFFICE, IS HEREBY ACCEPTED.

*Moss C. Stowell*  
ASSISTANT COMMISSIONER.

RECEIVED & FILED # 12...  
Oneida County Surveyor's Office  
Date.....  
By.....  
OCS Area #.....