

RECEIVED & FILED # **B 16**
Oneida County Surveyor's Office
Date.....
By.....
OCS Area #.....

I, John H. Fisher, Registered Land Surveyor S-836 hereby certify that this plat is correct representation of the condominium described and the identification of each unit and common element can be determined there from. Diagrammatic floor plans of each building, its approximate dimensions and unit area have been provided on sheet 2. This condominium plat, known as COACHLITE CONDOMINIUM, consists of 2 sheets and complies with Sec. 703.11 of Wisconsin statutes.

"COACHLITE CONDOMINIUM"

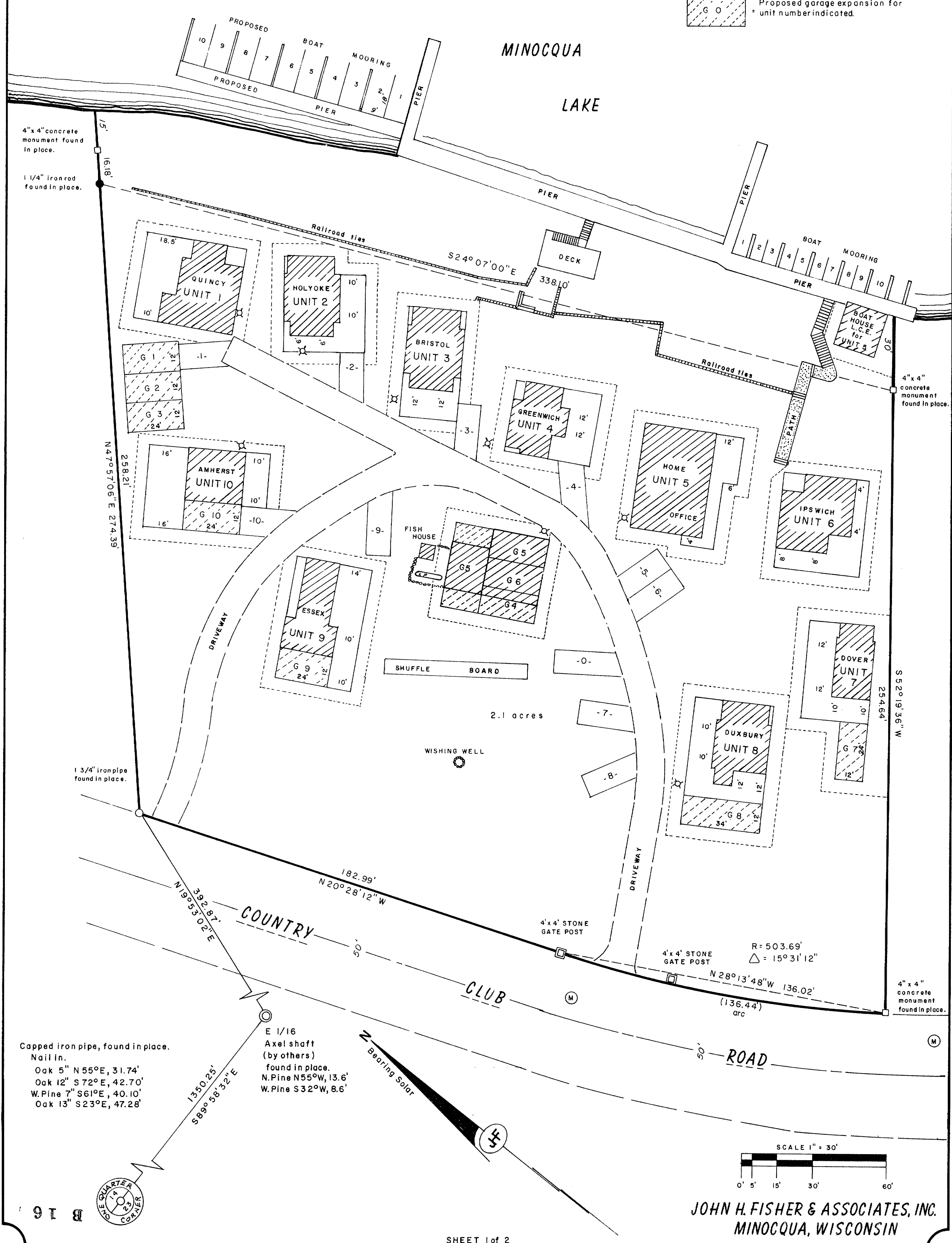
Being part of
GOV'T. LOT 9
SECTION 14, T39N, R6E
Minocqua Township
Oneida County, Wisconsin

John H. Fisher R.L.S. S-836

Dated _____

LEGEND

- Condominium and its unit number.
- 5 foot area (unless otherwise specified) around unit is Limited Common Element appurtenant to its unit number.
- Allowable area for expansion.
- Parking area is Limited Common Element appurtenant to its unit number.
- Designated area for boat mooring for unit number indicated.
- Water shut off valve (city water)
- Manhole (city sewer)
- Proposed garage expansion for unit number indicated.



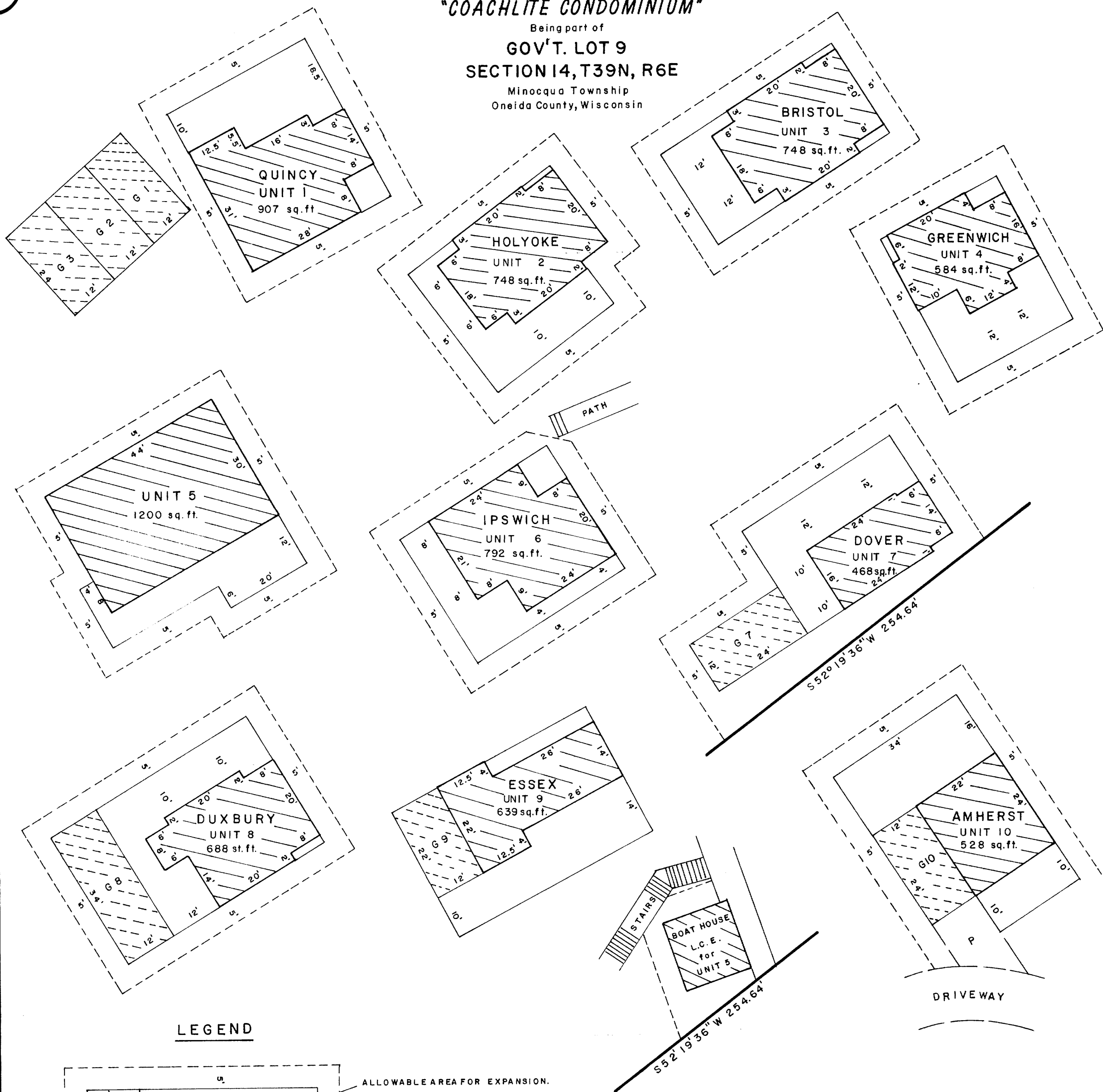
Capped iron pipe, found in place.
Nail in.
Oak 5" N 55° E, 31.74'
Oak 12" S 72° E, 42.70'
W. Pine 7" S 61° E, 40.10'
Oak 13" S 23° E, 47.28'

E 1/16
Axel shaft
(by others)
found in place.
N. Pine N 55° W, 13.6'
W. Pine S 32° W, 8.6'

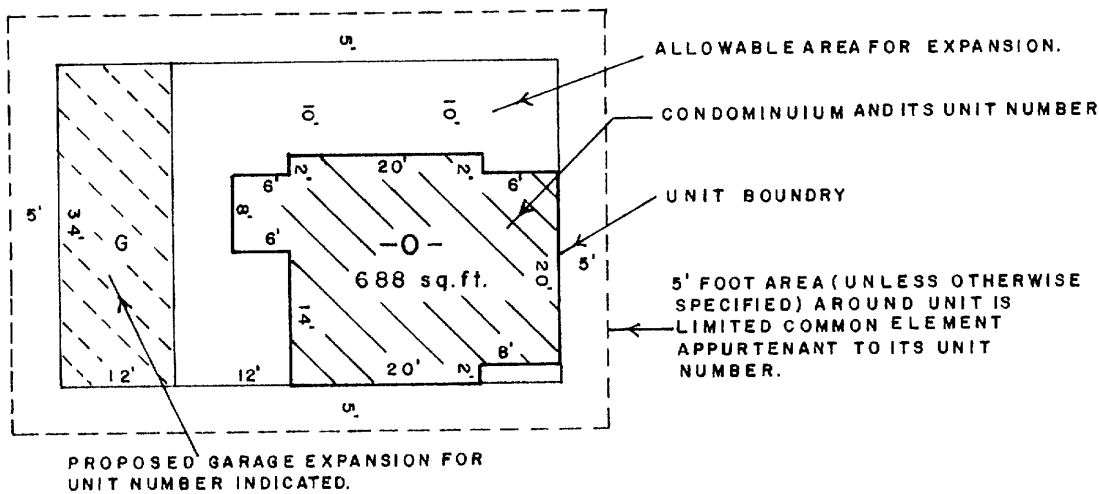
JOHN H. FISHER & ASSOCIATES, INC.
MINOCQUA, WISCONSIN

"COACHLITE CONDOMINIUM"

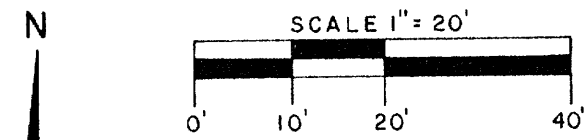
Being part of
GOV'T. LOT 9
SECTION 14, T39N, R6E
Minocqua Township
Oneida County, Wisconsin



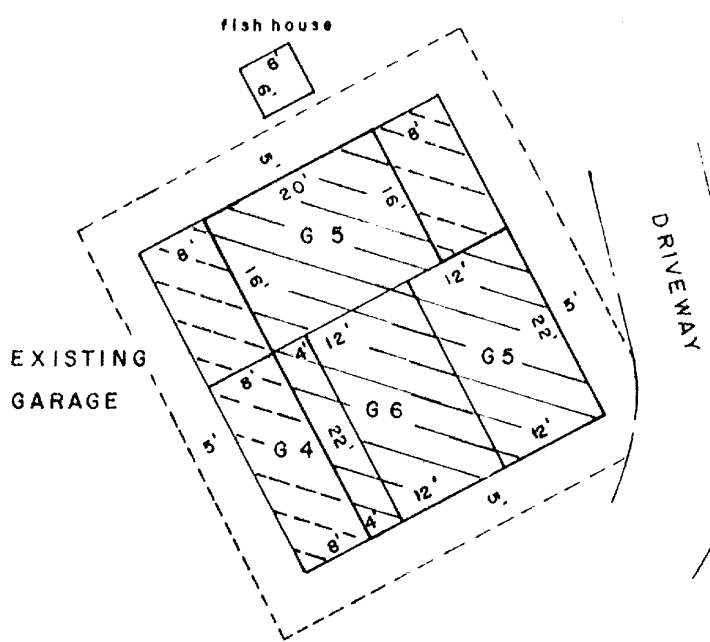
LEGEND



PROPOSED GARAGE EXPANSION FOR UNIT NUMBER INDICATED.



JOHN H. FISHER & ASSOCIATES, INC.
MINOCQUA, WISCONSIN



OWNERS CERTIFICATE

We Edward A. Piasecki and Flora Piasecki do hereby certify that we caused the lands described on this condominium plat, to be surveyed and mapped as represented on this plat.

Edward A. Piasecki
Dated _____

Flora Piasecki
Dated _____

COUNTY ZONING

Plat of COACHLITE CONDOMINIUM is hereby approved by the Oneida County Zoning Committee.

John Vanney, Zoning Administrator

Dated _____

TOWN BOARD

Plat of COACHLITE CONDOMINIUM is hereby approved by the TOWN BOARD, Town of Minocqua.

Chairman, _____ Dated _____

Town Clerk, _____ Dated _____

STATE OF WISCONSIN
ONEIDA COUNTY) SS

Personally came before me this _____ day of _____ 1985 the aboved named Edward A. Piasecki and Flora Piasecki to me known to be the persons who executed the foregoing instrument and acknowledge the same.

Notary Public, Oneida County, WI.
My commission expires 11-30-86