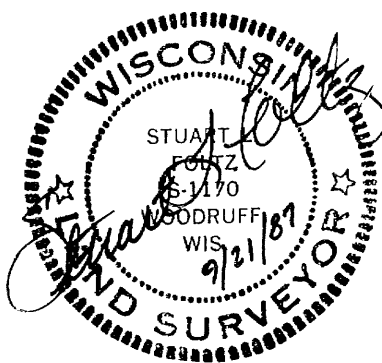
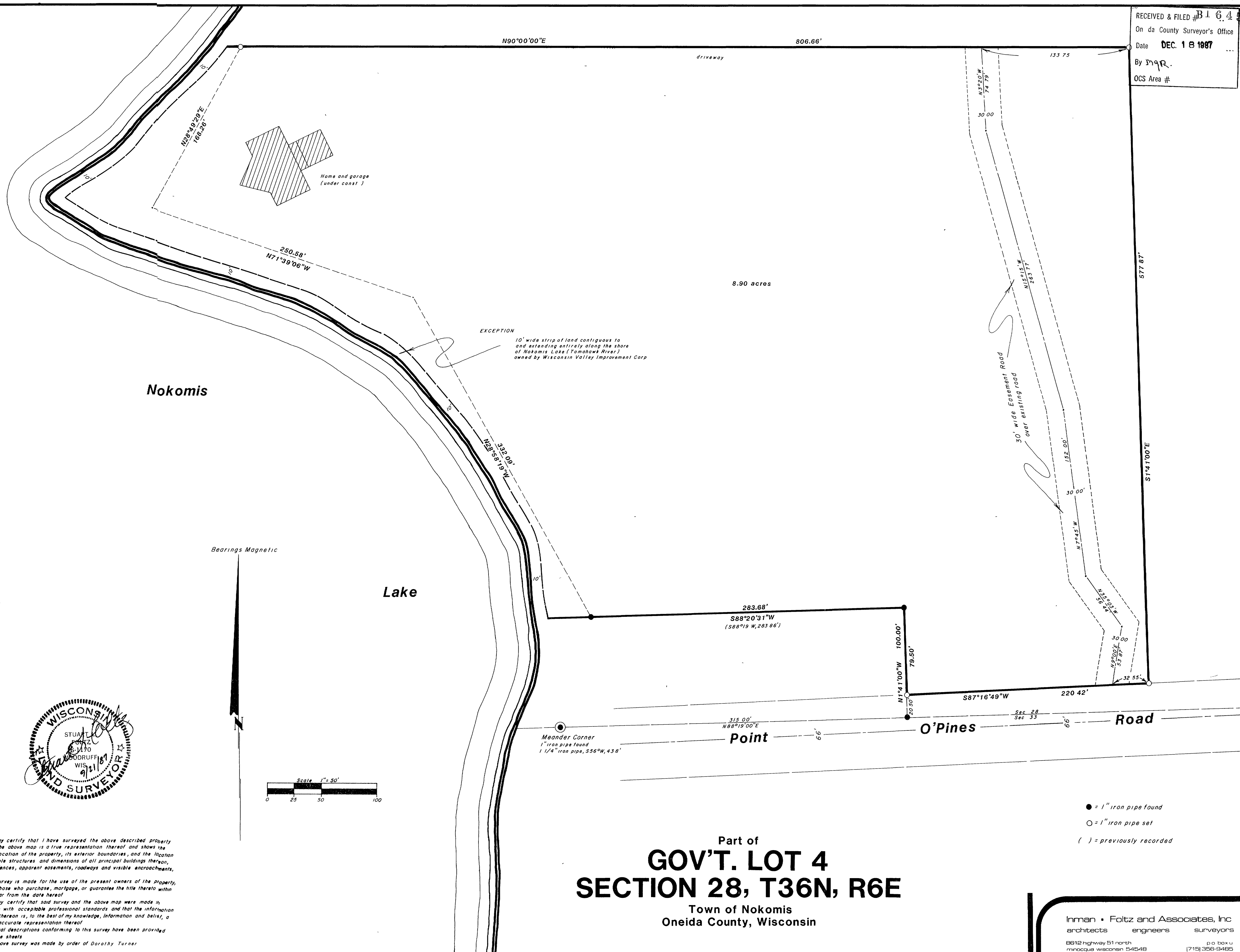
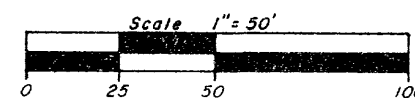


RECEIVED & FILED # B1645
 On da County Surveyor's Office
 Date DEC. 18 1987
 By MQR.
 OCS Area #



Bearings Magnetic



● = 1" iron pipe found
 ○ = 1" iron pipe set
 () = previously recorded

Part of
GOV'T. LOT 4
SECTION 28, T36N, R6E
 Town of Nokomis
 Oneida County, Wisconsin

Inman • Foltz and Associates, Inc.
 architects engineers surveyors
 8612 highway 51 north p.o. box 11
 minocqua wisconsin 54548 (715) 356-9485