

RECEIVED & FILED #431  
Oneida County Surveyor's  
Date AUG 17 1988  
By [Signature]  
OCS Area #

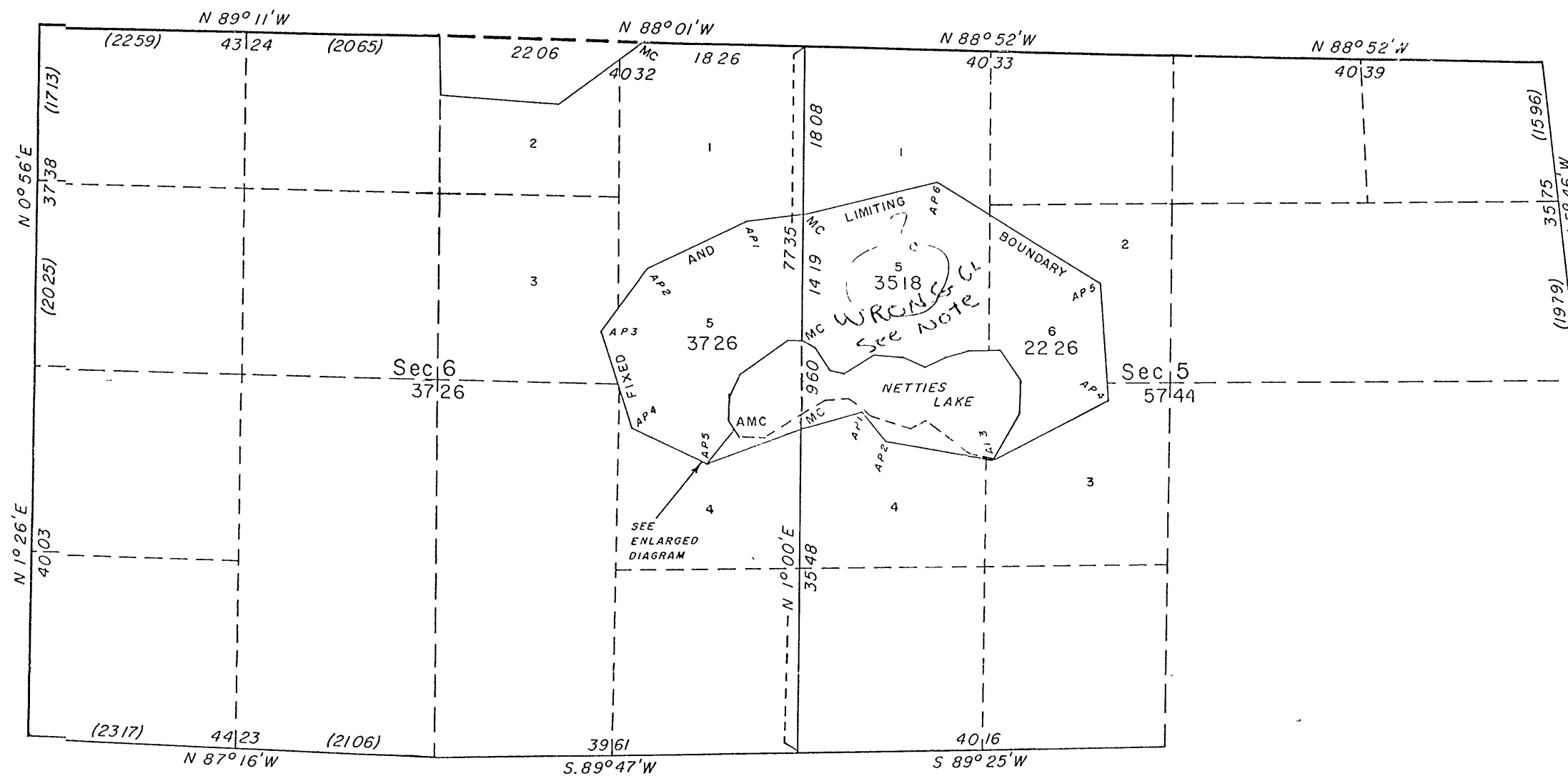
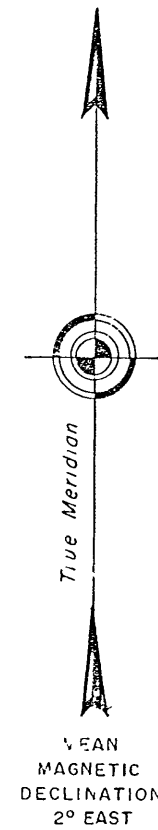
EAST 11 11

031866

# TOWNSHIP 37 NORTH, RANGE 9 EAST, OF THE FOURTH PRINCIPAL MERIDIAN, WISCONSIN.

## DEPENDENT RESURVEY AND SURVEY OF OMITTED LAND

There will be a revised map  
of this comms map. 8-17-88  
X See Next sheet X



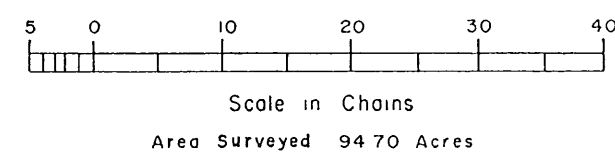
Latitude 45° 43' 9" N  
Longitude 89° 23' 0" W

A history of the surveys is contained in the field note record

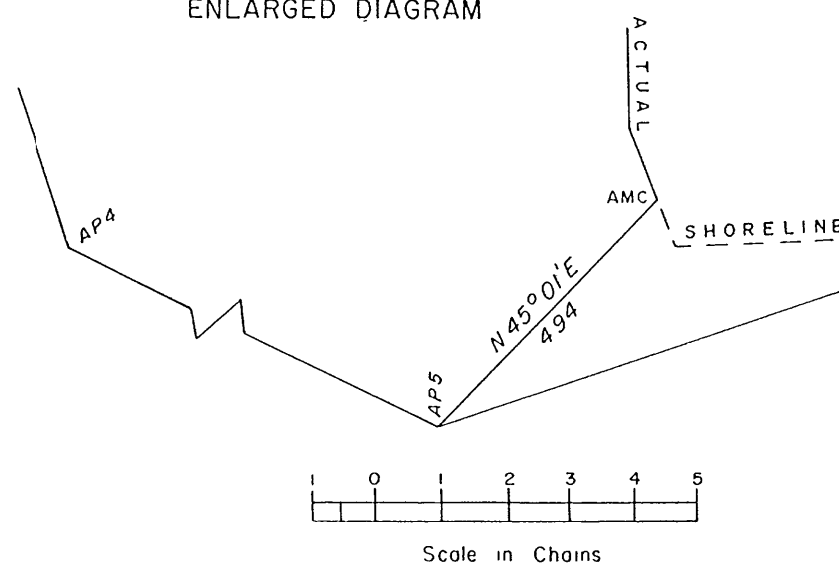
This plat represents the dependent resurvey of a portion of the west and north boundaries, a portion of the subdivisional lines and the reestablishment of a portion of the record meander lines to include lands omitted from the original survey in sections 5 and 6, Township 37 North, Range 9 East, Fourth Principal Meridian, Wisconsin

Except as indicated hereon, the lottings and areas are as shown on the plat approved March 18, 1864.

Survey executed by Michael J. Avery, Cadastral Surveyor, beginning May 1, 1980, and completed June 27, 1980, pursuant to Special Instructions for Group No 111, Wisconsin, dated April 14, 1980.



ENLARGED DIAGRAM



UNITED STATES DEPARTMENT OF THE INTERIOR  
BUREAU OF LAND MANAGEMENT  
Alexandria, Virginia July 12, 1982

This plat is strictly conformable to the approved field notes, and the survey, having been correctly executed in accordance with the requirements of law and the regulations of this Bureau, is hereby accepted

For the Director

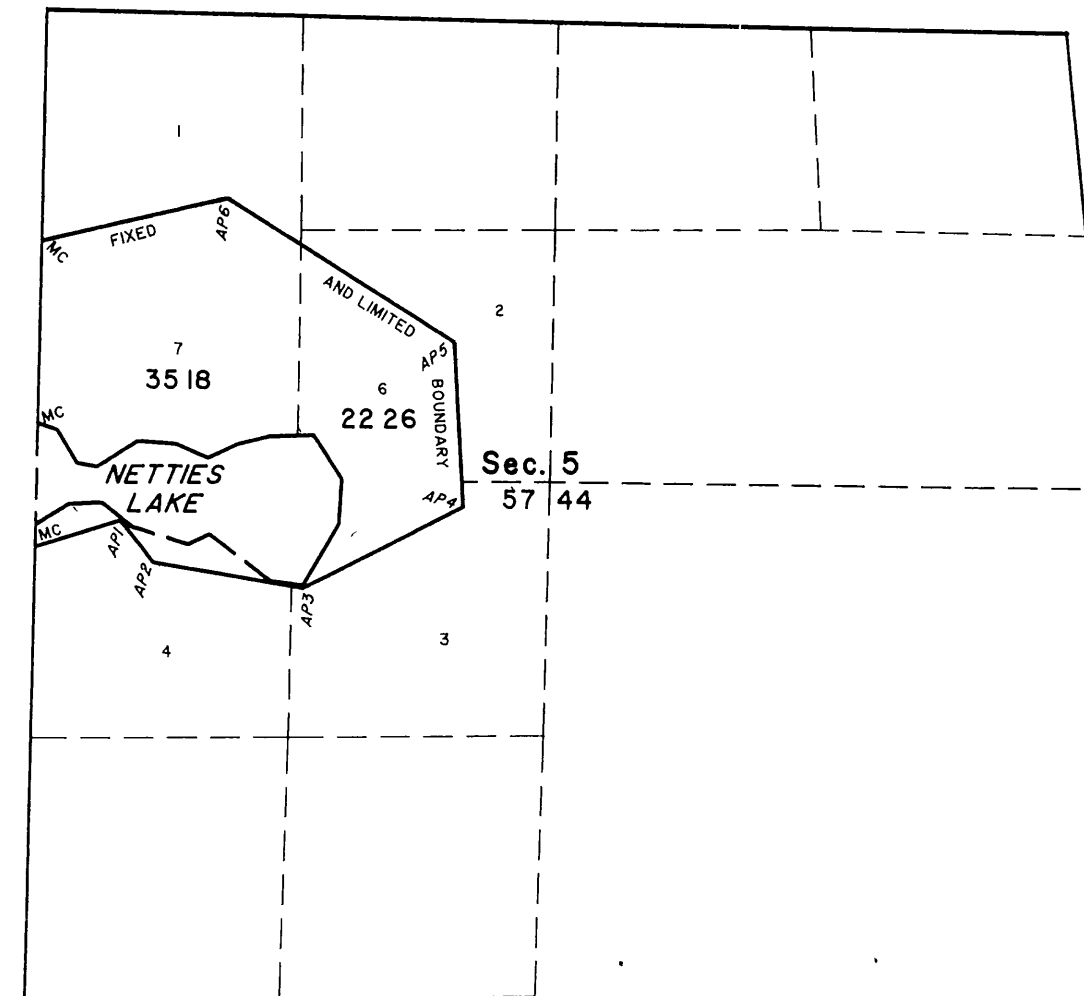
[Signature]

Chief Cadastral Surveyor  
Eastern States Office

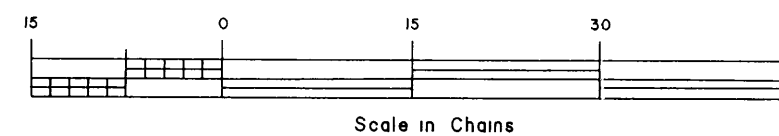
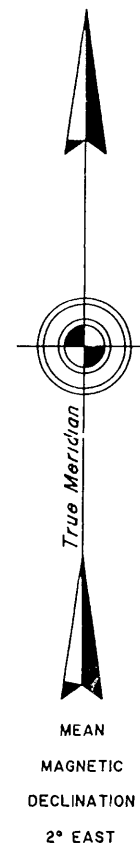
ORIGINAL

# TOWNSHIP 37 NORTH, RANGE 9 EAST, OF THE FOURTH PRINCIPAL MERIDIAN, WISCONSIN.

## SUPPLEMENTAL PLAT



This is the corrected  
GL O PLAT. GL 5  
already exists in the SE 1/4  
mqr. 10/14/88



This supplemental plat is based entirely upon the plat accepted July 12, 1982. It has been prepared as an administrative measure to provide for the redesignation of the 35 18 acre lot erroneously designated as Lot 5 of Section 5 on the accepted plat and referred in the field notes of the survey approved July 12, 1982. It is hereby redesignated as Lot 7 of Section 5, containing 35 18 acres.

Except as indicated hereon, the lottings and areas are as shown on the plat approved March 18, 1864.

UNITED STATES DEPARTMENT OF THE INTERIOR  
BUREAU OF LAND MANAGEMENT  
Alexandria, Virginia August 10, 1988

This plat, showing amended lotting, is based upon the official records and having been correctly prepared in accordance with the regulations, is hereby accepted.

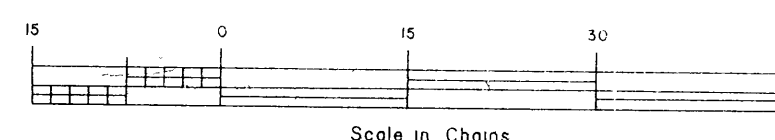
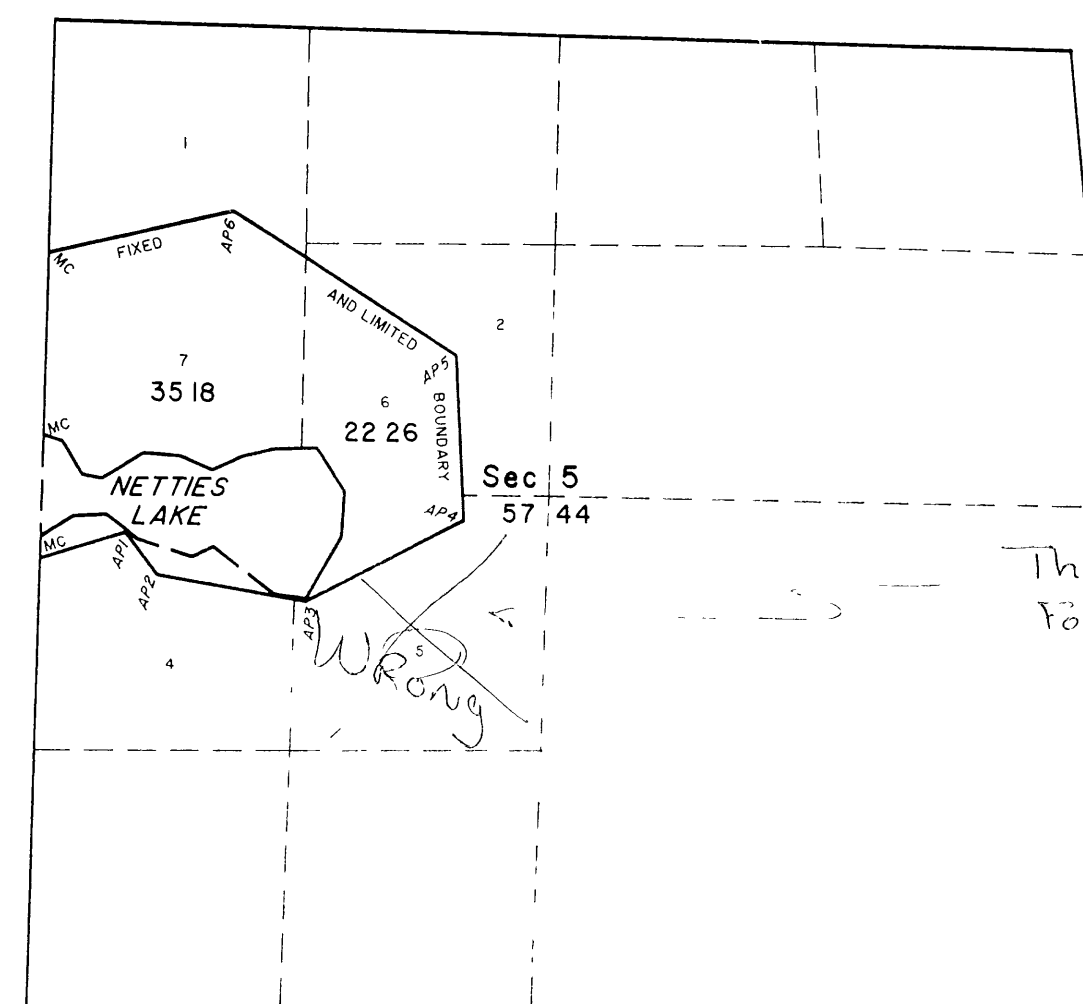
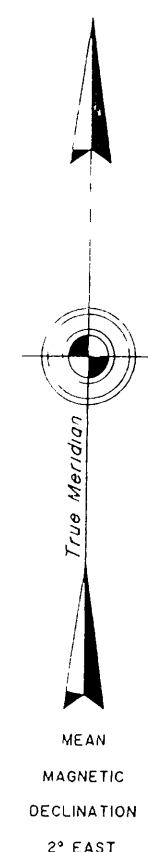
For the Director

*Ann J. Bauman*  
Chief Cadastral Surveyor  
Eastern States Office

DUPLICATE ORIGINAL

TOWNSHIP 37 NORTH, RANGE 9 EAST, OF THE FOURTH PRINCIPAL MERIDIAN, WISCONSIN.

SUPPLEMENTAL PLAT



This supplemental plat is based entirely upon the plat accepted July 12, 1982. It has been prepared as an administrative measure to provide for the redesignation of the 35.18 acre lot erroneously designated as Lot 5 of Section 5 on the accepted plat and referred in the field notes of the survey approved July 12, 1982. It is hereby redesignated as Lot 7 of Section 5, containing 35.18 acres.

Except as indicated hereon, the lottings and areas are as shown on the plat approved March 18, 1864.

UNITED STATES DEPARTMENT OF THE INTERIOR  
BUREAU OF LAND MANAGEMENT  
Alexandria, Virginia August 10, 1988

This plat, showing amended lotting, is based upon the official records and having been correctly prepared in accordance with the regulations, is hereby accepted.

For the Director

*Sam J. Bauman*

Chief Cadastral Surveyor  
Eastern States Office