

RECEIVED & FILED #31  
Oneida County Surveyor's  
Date AUG 17 1988  
By [Signature]  
OCS Area #

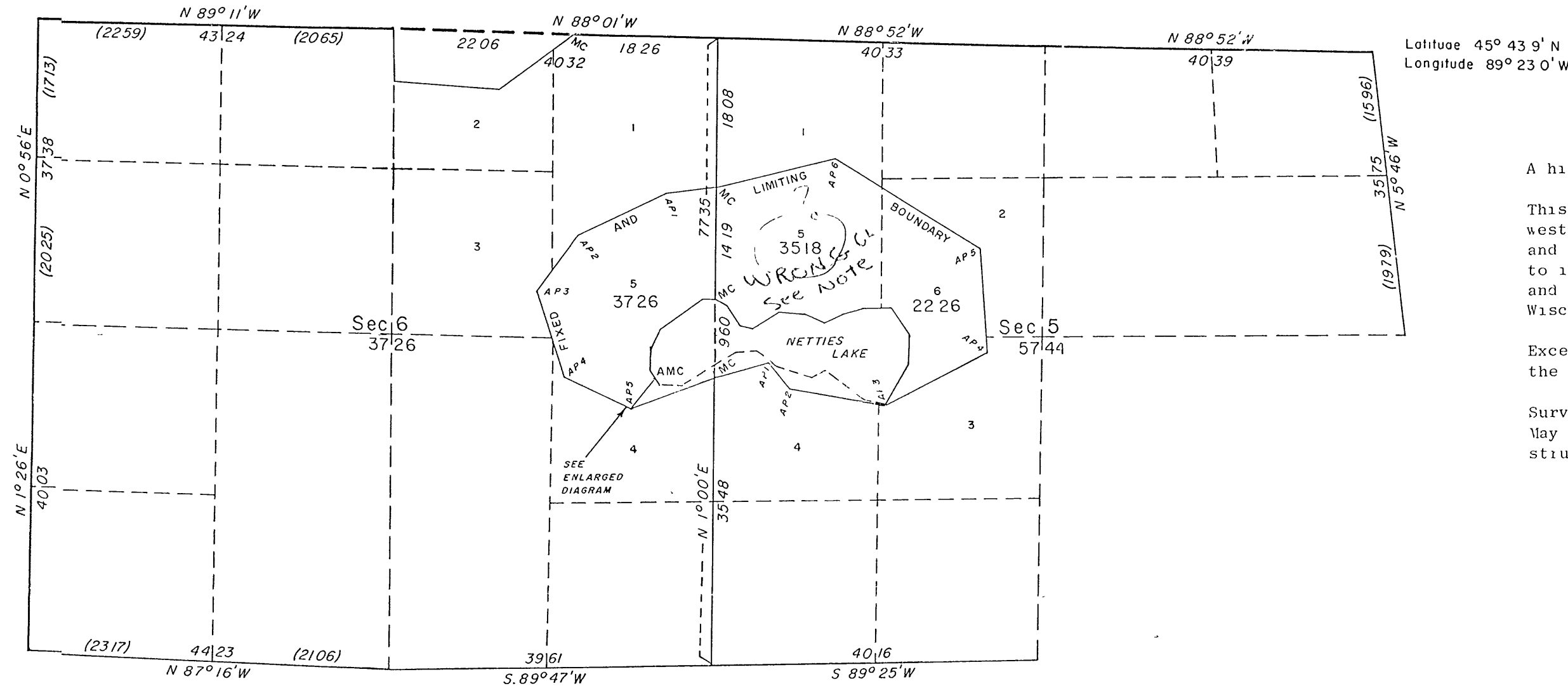
EAST 11 11

031866

# TOWNSHIP 37 NORTH, RANGE 9 EAST, OF THE FOURTH PRINCIPAL MERIDIAN, WISCONSIN.

## DEPENDENT RESURVEY AND SURVEY OF OMITTED LAND

There will be a revised map  
of this comms map. 8-17-88  
X See Next sheet X



A history of the surveys is contained in the field note record

This plat represents the dependent resurvey of a portion of the west and north boundaries, a portion of the subdivisional lines and the reestablishment of a portion of the record meander lines to include lands omitted from the original survey in sections 5 and 6, Township 37 North, Range 9 East, Fourth Principal Meridian, Wisconsin

Except as indicated hereon, the lottings and areas are as shown on the plat approved March 18, 1864.

Survey executed by Michael J. Avery, Cadastral Surveyor, beginning May 1, 1980, and completed June 27, 1980, pursuant to Special Instructions for Group No 111, Wisconsin, dated April 14, 1980.

UNITED STATES DEPARTMENT OF THE INTERIOR  
BUREAU OF LAND MANAGEMENT  
Alexandria, Virginia July 12, 1982

This plat is strictly conformable to the approved field notes, and the survey, having been correctly executed in accordance with the requirements of law and the regulations of this Bureau, is hereby accepted

For the Director

[Signature]

Chief Cadastral Surveyor  
Eastern States Office

ENLARGED DIAGRAM

