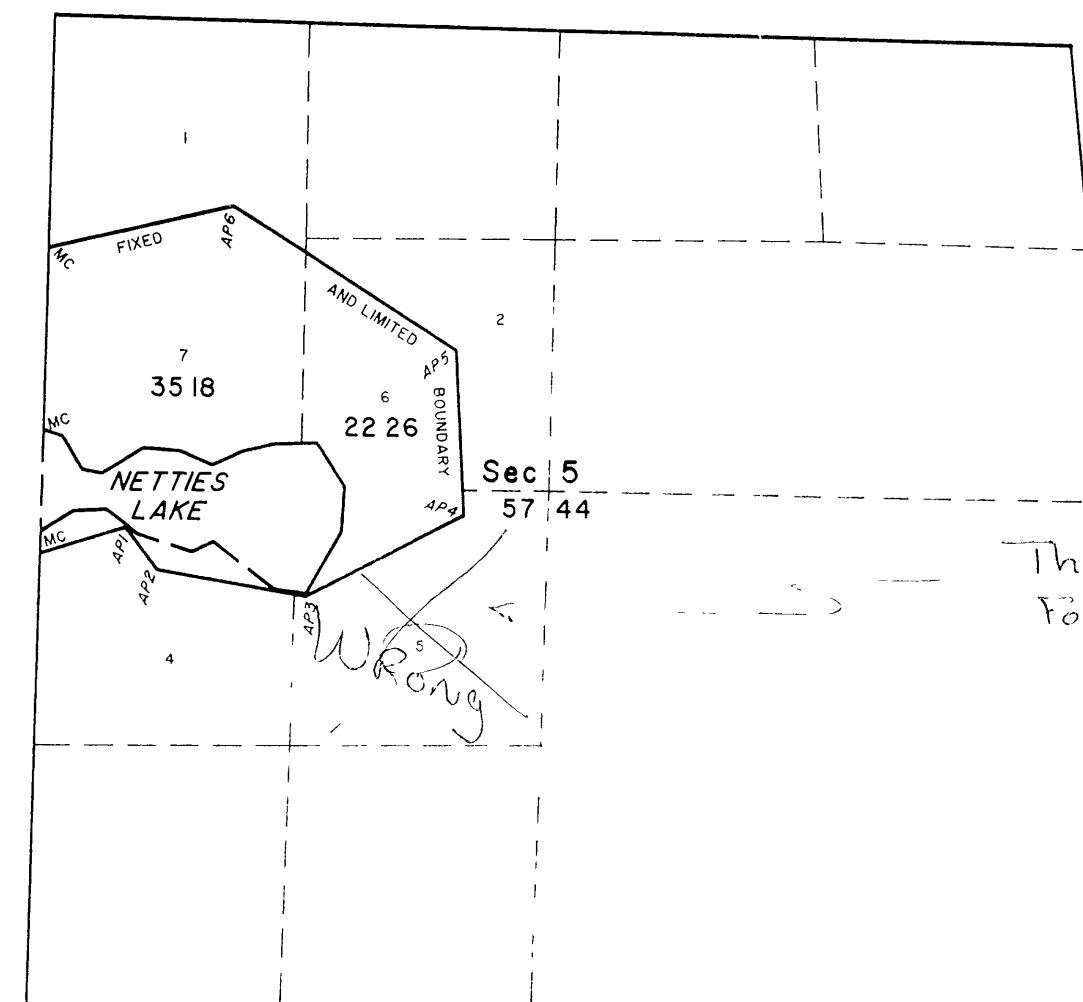
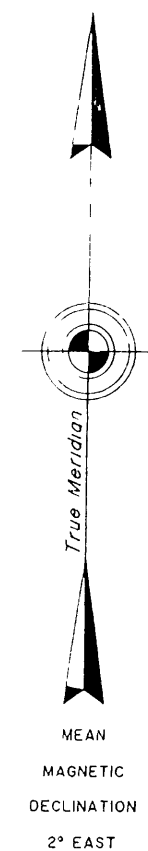


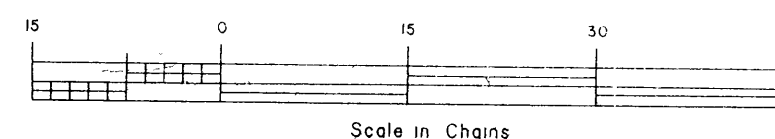
DUPLICATE ORIGINAL

TOWNSHIP 37 NORTH, RANGE 9 EAST, OF THE FOURTH PRINCIPAL MERIDIAN, WISCONSIN.

SUPPLEMENTAL PLAT



This map is in error  
for G.L. #5



This supplemental plat is based entirely upon the plat accepted July 12, 1982. It has been prepared as an administrative measure to provide for the redesignation of the 35.18 acre lot erroneously designated as Lot 5 of Section 5 on the accepted plat and referred in the field notes of the survey approved July 12, 1982. It is hereby redesignated as Lot 7 of Section 5, containing 35.18 acres.

Except as indicated hereon, the lottings and areas are as shown on the plat approved March 18, 1864.

UNITED STATES DEPARTMENT OF THE INTERIOR  
BUREAU OF LAND MANAGEMENT  
Alexandria, Virginia August 10, 1988

This plat, showing amended lotting, is based upon the official records and having been correctly prepared in accordance with the regulations, is hereby accepted.

For the Director

*Sam J. Bauman*

Chief Cadastral Surveyor  
Eastern States Office