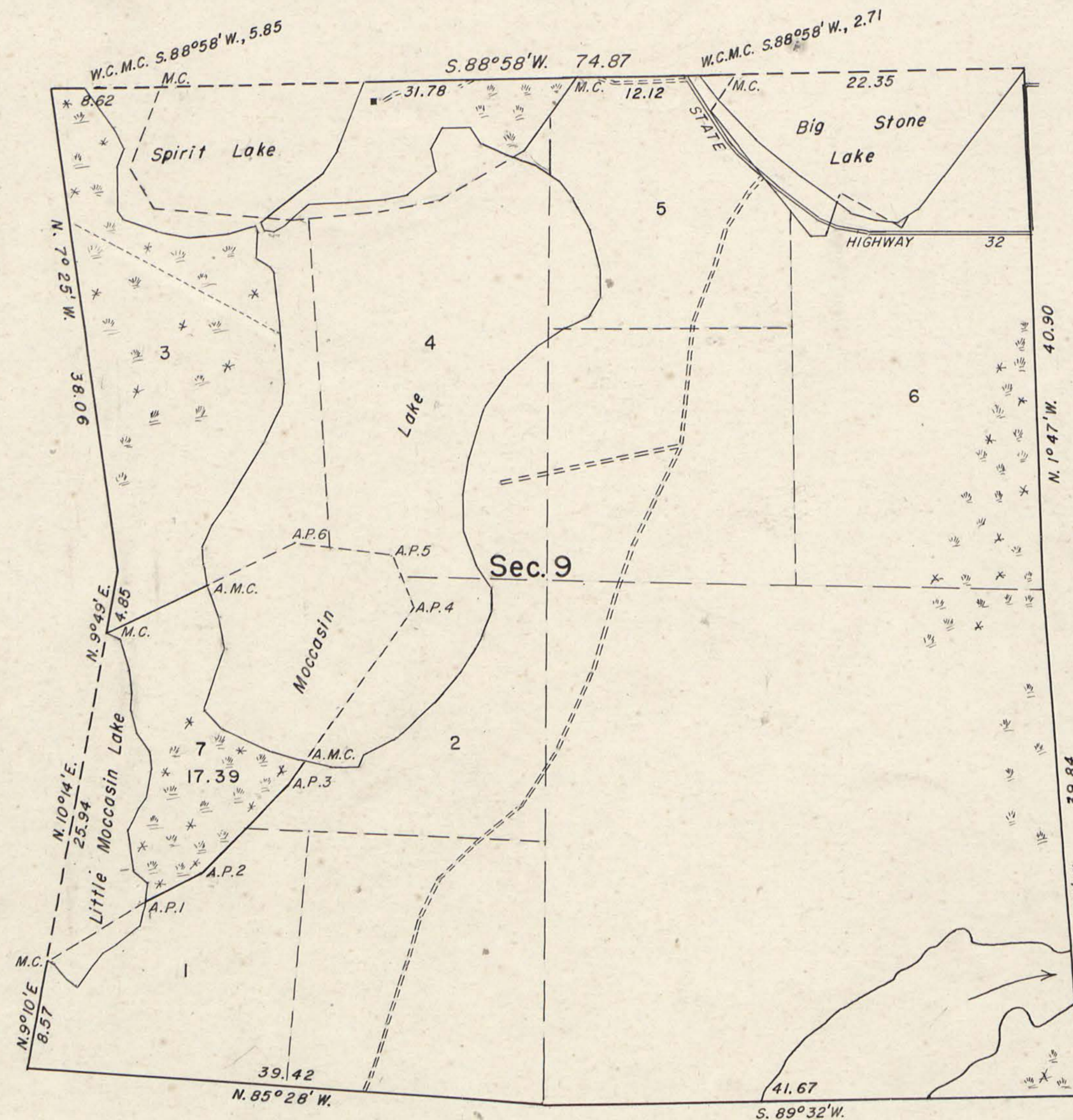


ORIGINAL

TOWNSHIP 38 NORTH, RANGE 11 EAST, OF THE FOURTH PRINCIPAL MERIDIAN, WISCONSIN  
DEPENDENT RESURVEY AND SURVEY OF OMITTED LAND, SEC. 9



This plat represents a retracement and reestablishment of portions of the original subdivisional lines designed to restore all corners on the boundaries of Sec. 9 in their original locations according to the best available evidence, and the survey of omitted lands which were erroneously omitted from the original survey and not shown upon the plat approved December 20, 1859.

The position of the original record-meander courses of Moccasin Lake is shown by an irregular line with numbered angle points. This line, as thus originally reported, was grossly in error and with the exception of certain courses fronting on Lots 1, 2, 3, and 4, has been established as a fixed boundary with the directions and lengths of the several record-meander courses adjusted to the reestablished position of the original survey.

MAP # B1727 ✓

DATE FILED: 10-19-2021

BY: JAP

DESCRIPTION FILED:

ONEIDA CO. SURVEYOR'S OFFICE

Surveyed by Hugh B. Crawford, Cadastral Engineer, pursuant to special instructions for Group 65, Wisconsin, dated June 10, 1952 and July 30, 1952. Survey commenced October 7, 1952 and completed July 17, 1953.

UNITED STATES DEPARTMENT OF THE INTERIOR  
BUREAU OF LAND MANAGEMENT  
Washington, D. C. October 19, 1954

This plat is strictly conformable to the approved field notes, and the survey, having been correctly executed in accordance with the requirements of law and the regulations of this Bureau, is hereby accepted.

For the Director

Acting Cadastral Engineering Officer