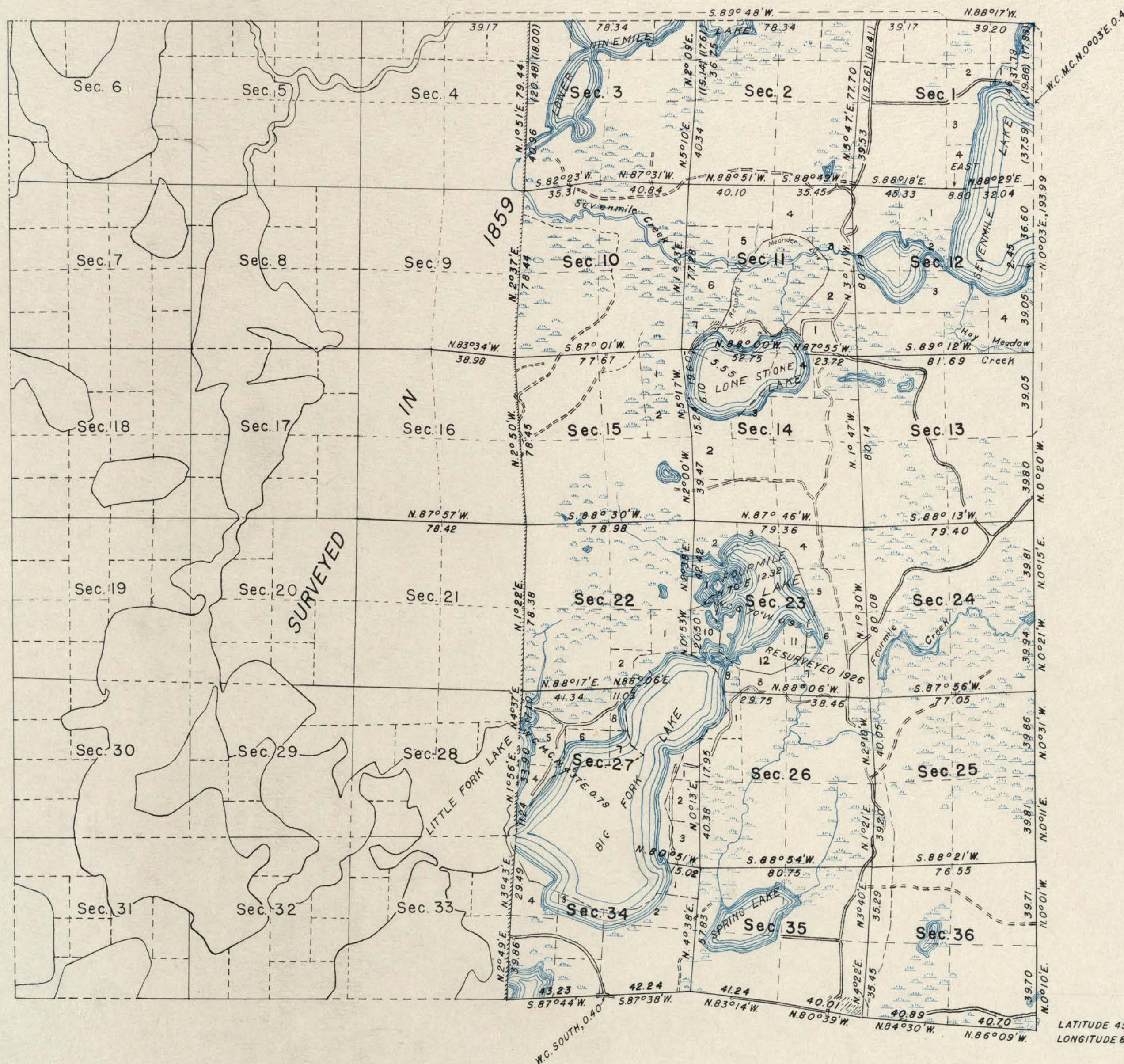


## DEPENDENT RESURVEY OF SECTIONS 1-3, 10-15, 22-27, &amp; 34-36.

DESCRIPTION FILED: \_\_\_\_\_

ONEIDA CO. SURVEYOR'S OFFICE



THE RESURVEY WAS EXECUTED PURSUANT TO  
AUTHORITY CONTAINED IN GENERAL LAND OFFICE  
LETTER 1858603 "E" DATED MARCH 21, 1941.

THE SURVEY REPRESENTED BY THIS PLAT HAVING BEEN CORRECTLY EXECUTED IN ACCORDANCE WITH THE REQUIREMENTS OF LAW AND THE REGULATIONS OF THIS OFFICE, IS HEREBY ACCEPTED.

ASSISTANT COMMISSIONER.

LINES DESIGNATED	BY WHOM SURVEYED	GROUP No	DATE OF SPECIAL INSTRUCTIONS	WHEN SURVEYED	
				BEGUN	COMPLETED
Exterior Subdivisional	Hugh B. Crawford	51	April 25, 1941	June 2, 1941	Oct. 18, 1941
	"	"	"	"	"

TOPOGRAPHY WITHIN SECTIONS COMPILED FROM AERIAL PHOTOGRAPHS AND COORDINATED WITH SECTION LINE CONTROL OBTAINED DURING SURVEY.