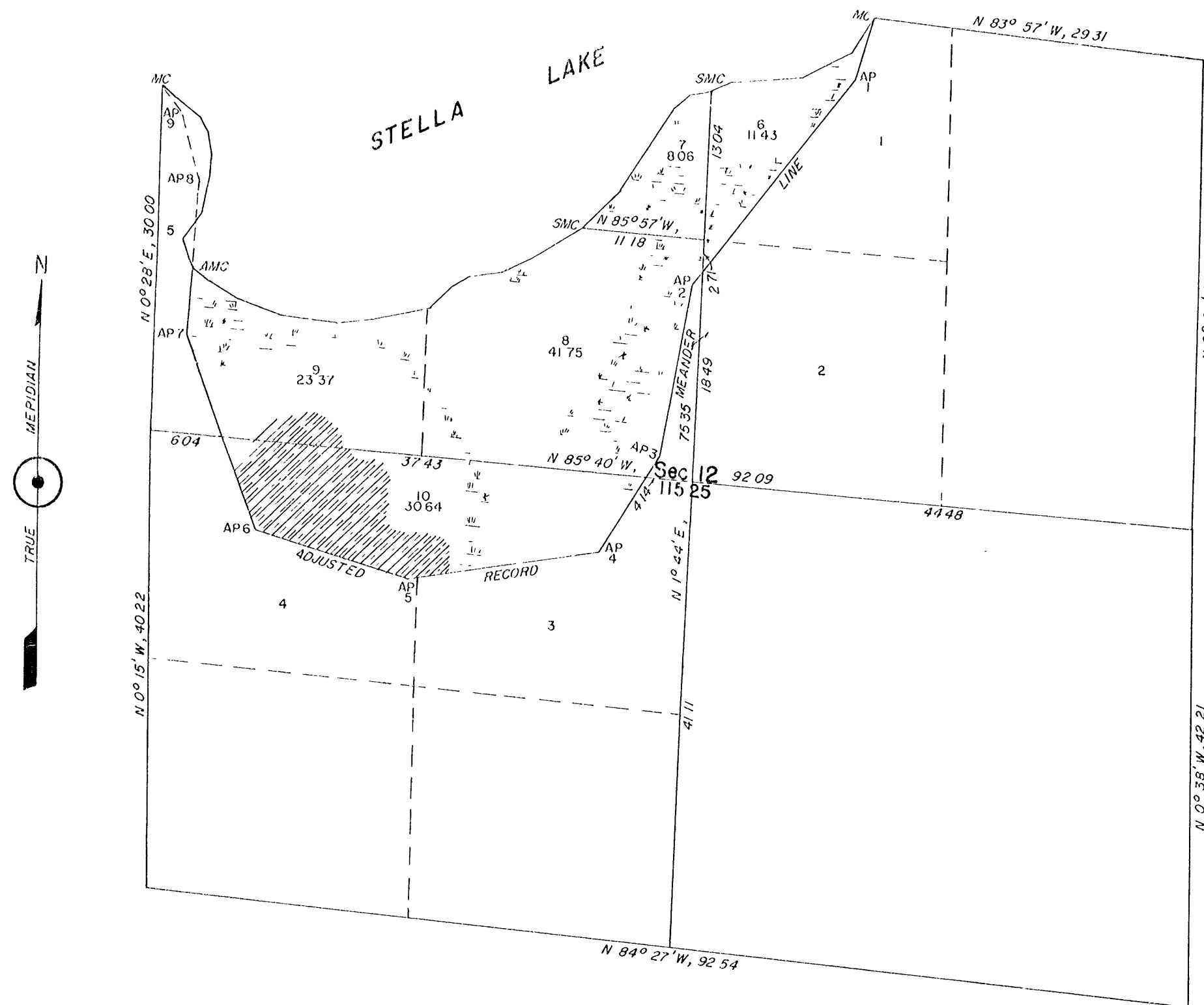


RECEIVED & FILED # 780
Oconto County Surveyor's Office
Date OCT 4 1960
By MQR
OCS Area #

DUPLICATE ORIGINAL

10

TOWNSHIP 37 NORTH, RANGE 10 EAST, FOURTH PRINCIPAL MERIDIAN, WISCONSIN
DEPENDENT RESURVEY AND EXTENSION SURVEY, SECTION 12



This plat represents a retracement and reestablishment of the original surveys designed to restore all corners on the boundaries of sec 12 in their original locations according to the best available evidence, and an extension survey to include lands which were erroneously omitted from the original survey and not shown upon the plat approved March 18, 1864

The position of the original record-meander courses of Stella Lake is shown by the irregular line with numbered angle points. This line, as thus originally reported, was grossly in error and, with the exception of certain courses fronting on Lot 5, has been established as a fixed and limiting boundary, with the directions and lengths of the several courses adjusted to the record of the original survey.

The section has been partially subdivided along lines recognized and accepted by the adjoining owners and claimants

Surveyed by Hugh B. Crawford, Cadastral Surveyor, from September 1 to October 1, 1959, under special instructions for Group 70, dated August 3, 1959.

UNITED STATES DEPARTMENT OF THE INTERIOR
BUREAU OF LAND MANAGEMENT
Washington, D. C. May 20, 1960

This plat is strictly conformable to the approved field notes, and the survey, having been correctly executed in accordance with the requirements of law and the regulations of this Bureau, is hereby accepted.

For the Director

Donald Clement

Cadastral Engineering Staff Officer

R.L.S.