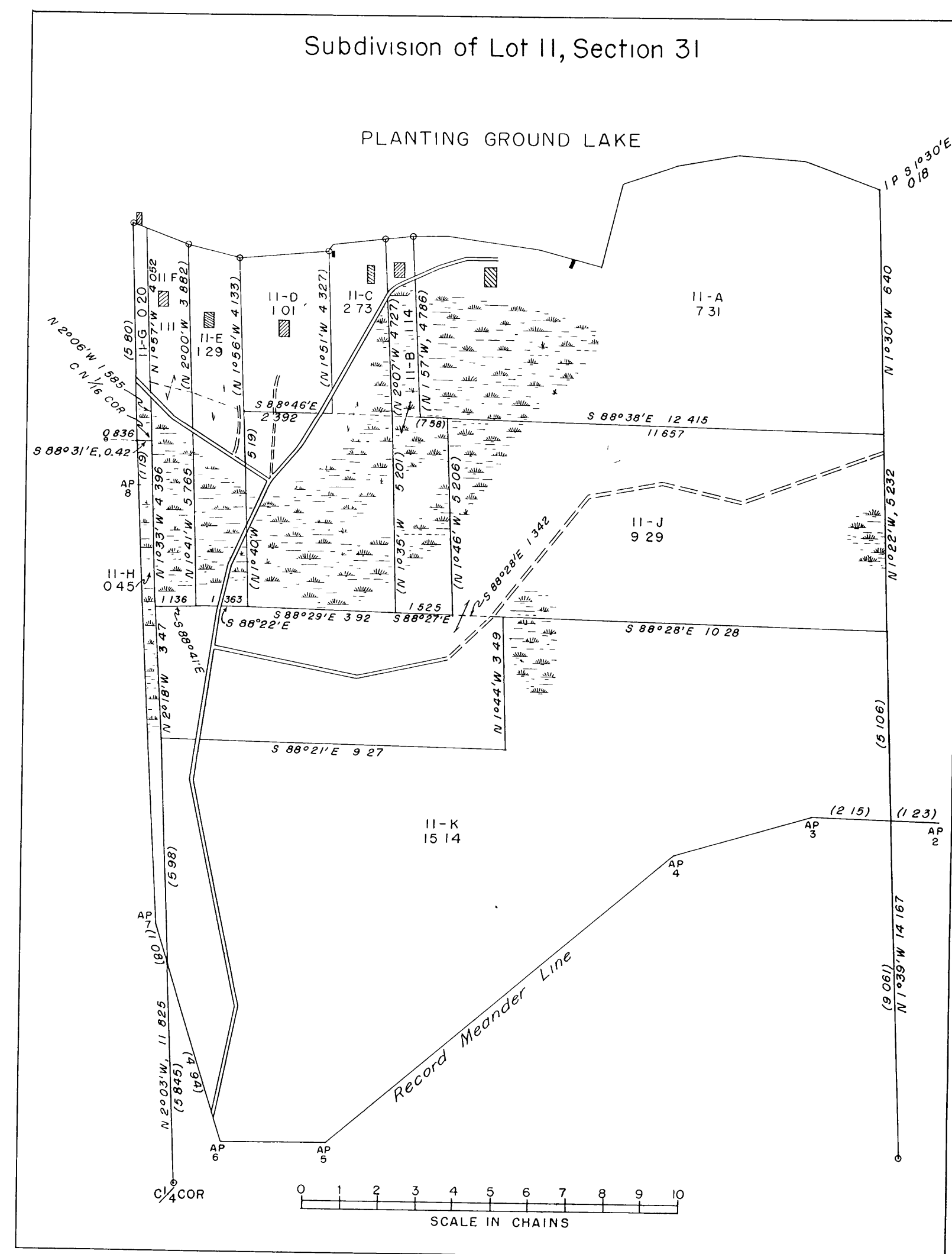
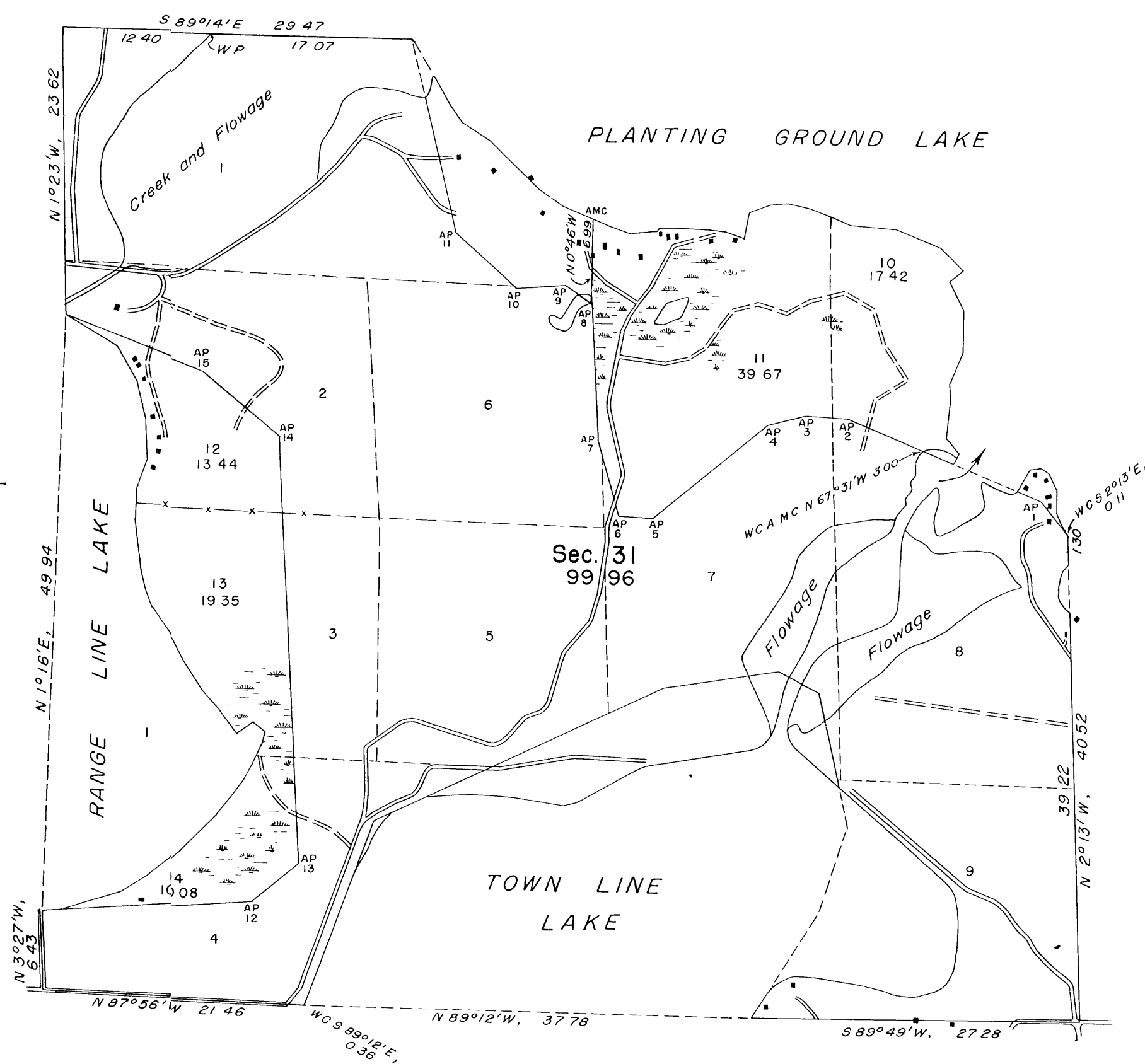


# TOWNSHIP 39 NORTH, RANGE 11 EAST, OF THE FOURTH PRINCIPAL MERIDIAN, WISCONSIN

## SURVEY OF OMITTED LANDS, SECTION 31



This plat represents a retracement and reestablishment of the boundaries of sec. 31, designed to restore the corners in their original locations according to the best available evidence, and the survey of public lands which were erroneously omitted from the original survey and not shown upon the plat approved February 4, 1860.

The position of the original record meander courses of Planting Ground and Range Line Lakes is shown by irregular lines with numbered angle points. These lines, as thus originally reported, were grossly in error and, with the exception of certain courses fronting on lots, 1, 6, and 8, have been marked as fixed boundaries, with the directions and lengths of the several courses adjusted to the record of the original survey.

Lot 11 has been subdivided in conformity with the areas claimed and occupied, as shown on the insert diagram.

Surveyed by Hugh B. Crawford, Cadastral Engineer, from September 11 to October 29, 1952, pursuant to Special Instructions for Group 65, dated June 10, 1952 and July 30, 1952.

UNITED STATES DEPARTMENT OF THE INTERIOR  
BUREAU OF LAND MANAGEMENT  
Washington, D. C., November 16, 1953

This plat is strictly conformable to the approved field notes, and the survey, having been correctly executed in accordance with the requirements of law and the regulations of this Bureau, is hereby accepted.

For the Director

*[Signature]*  
Assistant Chief, Division of  
Cadastral Engineering