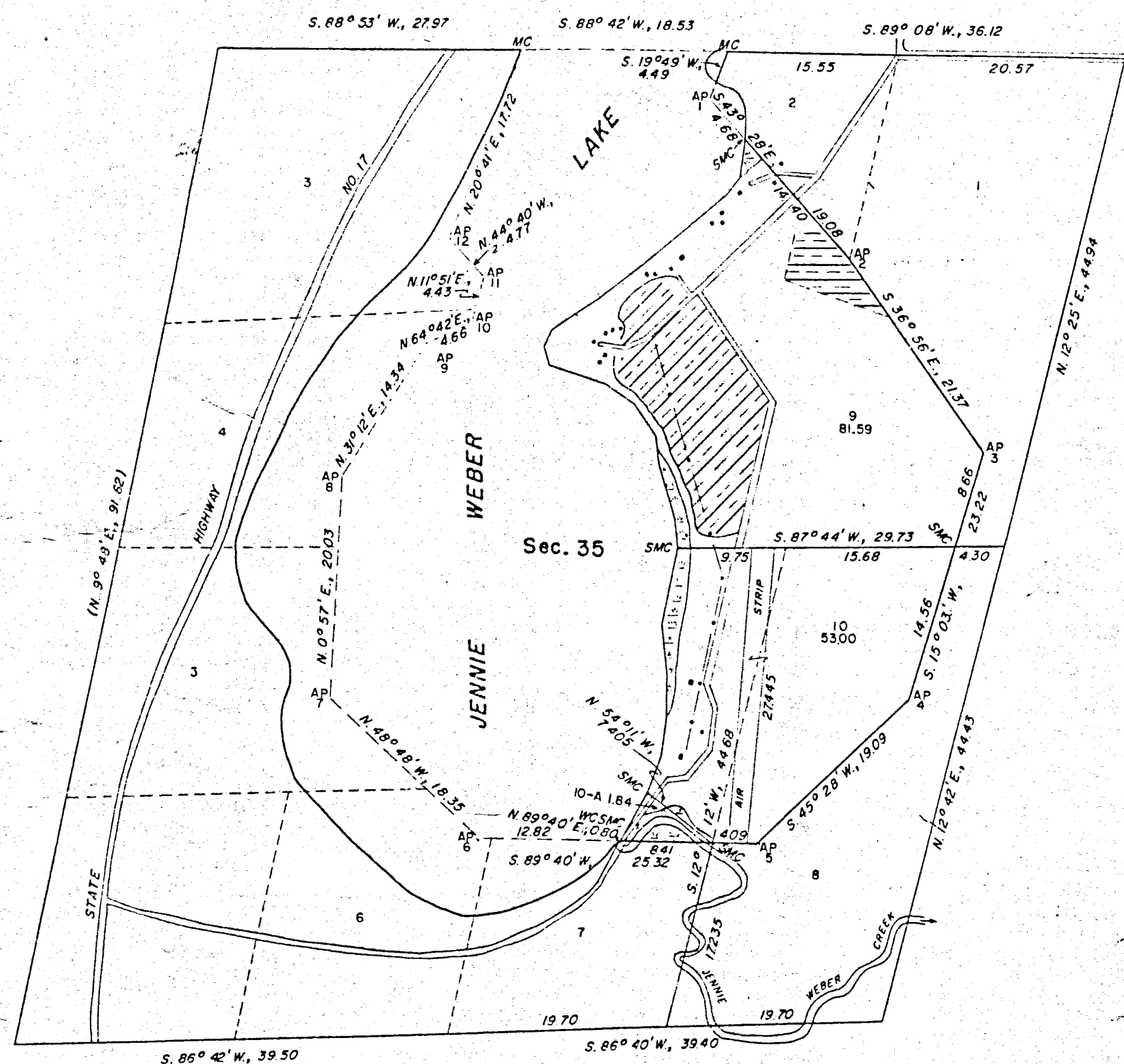


BI 233

CC, T

BI 733

RECEIVED & FILED #
Oncology County Surveyor's
Date OCT. 14 1988
By *m.e.*
OCS Area #



Area resurveyed: 121.55 Acres
Area surveyed: 136.43 Acres

This plat represents a retracement and reestablishment of portions of the Township boundary and subdivisional lines, designed to restore corners on the boundaries of sec. 35 in the true original locations according to the best available evidence of the position of the original corners, and an extension survey to include lands which were erroneously omitted from the original survey and not shown upon the plat approved June 9, 1864.

The position of the original record meander courses of the Jennie Weber Lake in this section is shown by an irregular line with numbered angle points. This line, as thus originally reported, was grossly in error and with the exception of courses fronting lots 3, 4, 5 and 6 has been established as a fixed and limiting boundary, with the directions and lengths of the several courses adjusted to the record of the original survey.

The section has been partially subdivided along lines recognized and accepted by the adjoining owners and claimants.

Surveyed by Hugh B. Crawford, Cadastral Surveyor,
from October 5, 1959 to July 15, 1960, under special
instructions for Group 70, dated August 3, 1959.

UNITED STATES DEPARTMENT OF THE INTERIOR
BUREAU OF LAND MANAGEMENT
Washington, D.C. February 9, 1961

This plat is strictly conformable to the approved field notes, and the survey, having been correctly executed in accordance with the requirements of law and the regulations of this Bureau, is hereby accepted.

For the Director

James O. Cline
Cadastral Engineering Staff Officer

B1738

00
01
1-
1-
1-