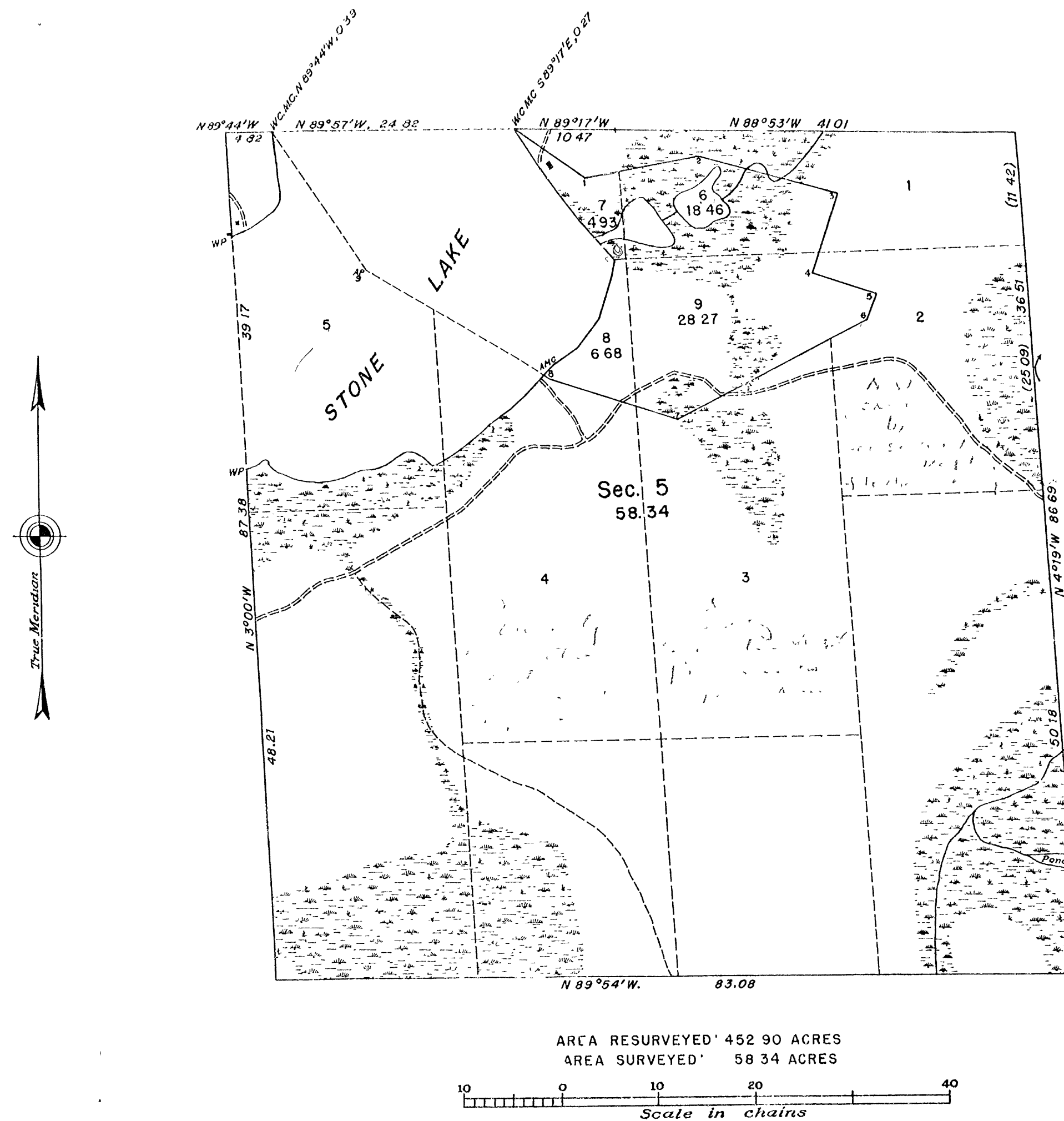


RECEIVED & FILED
 On file County of Clark's Office
 Date Dec. 4 1888
 By *mas*
 CCS Area #

DUPLICATE

9

TOWNSHIP 38 NORTH, RANGE 9 EAST, OF THE FOURTH PRINCIPAL MERIDIAN, WISCONSIN DEPENDENT RESURVEY AND EXTENSION SURVEY, SECTION 5



This plat represents the retracement and reestablishment of a portion of the township boundary and subdivisional lines, designed to restore all corners on the boundaries of sec. 5 in the true original locations according to the best available evidence of the position of the original corners, and an extension survey to include lands erroneously omitted from the original survey and not shown upon the plat approved June 9, 1864.

The position of the original record meander courses of a lake in this section is shown by an irregular line with numbered angle points. This line as originally reported was grossly in error and, with the exception of certain courses fronting on lots 4 and 5, has been established as a fixed boundary, with the directions and lengths of the several courses adjusted to the record of the original survey.

UNITED STATES DEPARTMENT OF THE INTERIOR
 BUREAU OF LAND MANAGEMENT
 Washington, D. C., June 20, 1951

This plat is strictly conformable to the approved field notes, and the survey, having been correctly executed in accordance with the requirements of law and the regulations of this Bureau, is hereby accepted.

For the Director

William F. Richards

Chief, Branch of Surveys

Survey executed by Hugh B. Crawford, Cadastral Engineer, from August 28 to September 14, 1950, under Special Instructions for Group 62, Wisconsin, dated June 9, 1950.

C.B.J.

186
E3