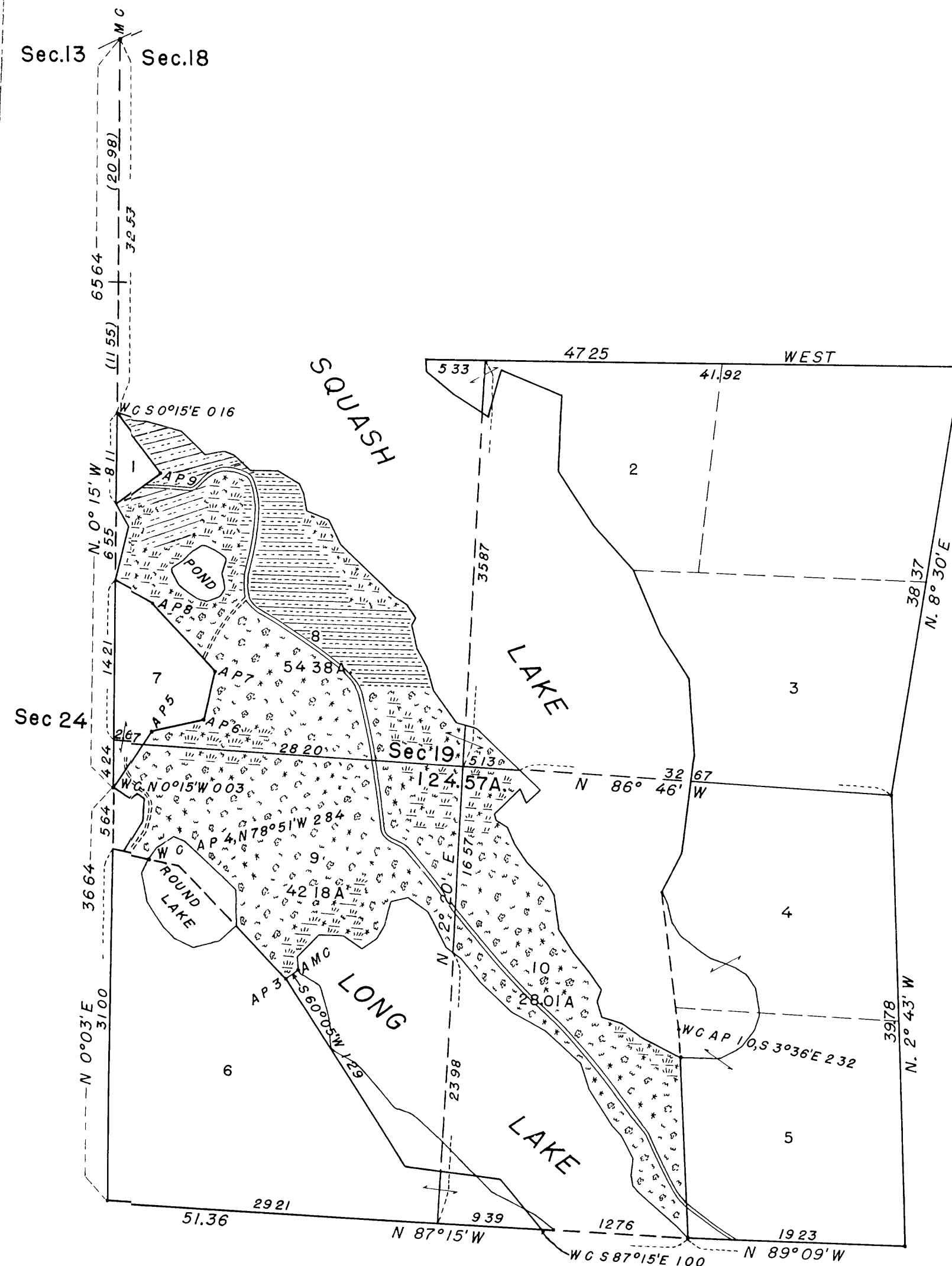


TOWNSHIP NO.36 NORTH, RANGE NO.8 EAST, OF THE FOURTH PRINCIPAL MERIDIAN, WISCONSIN.

DEPENDENT RESURVEY AND EXTENSION SURVEY, SECTION 19.

8

PROPOSED & FULL
For the County Surveyor
OCT 1 4 1943
Jat
by
DGS



MEMORANDUM.

THIS PLAT DELINEATES THE RETRACEMENT, AND THE REESTABLISHMENT OF A PORTION OF THE BOUNDARIES OF SECTION 19, T. 36 N., R. 8 E., AS SHOWN UPON THE PLAT APPROVED MARCH 18, 1864, IN THEIR TRUE ORIGINAL POSITIONS ACCORDING TO THE BEST AVAILABLE EVIDENCE OF THE POSITION OF THE ORIGINAL CORNERS, AND AN EXTENSION SURVEY INCLUDING LANDS ERRONEOUSLY OMITTED FROM THE ORIGINAL SURVEY AND NOT SHOWN ON SAID PLAT.

THE POSITION OF THE ORIGINAL RECORD MEANDER COURSES OF A LAKE LOCATED IN SECTION 19 IS SHOWN BY IRREGULAR LINES WITH NUMBERED ANGLE POINTS. PORTIONS OF THESE LINES, FRONTING ALONG LOTS 1, 5, 6, AND 7, WERE GROSSLY IN ERROR AND THESE PORTIONS HAVE THEREFORE BEEN ESTABLISHED AS A FIXED BOUNDARY, WITH THE DIRECTIONS AND THE LENGTHS OF THE SEVERAL COURSES ADJUSTED TO THE RECORD OF THE ORIGINAL SURVEY.

THE SECTION HAS BEEN SUBDIVIDED BY SURVEY TO ESTABLISH THE CENTER LINES THEREOF ACROSS THE PUBLIC LAND AREA.

THE SURVEY WAS EXECUTED PURSUANT TO AUTHORITY CONTAINED IN GENERAL LAND OFFICE LETTER 1890706 "E" DATED JUNE 18, 1942, WHICH BEARS DEPARTMENTAL APPROVAL UNDER DATE OF JUNE 24, 1942.

4-498
ORIGINAL
DUPLICATE PLAT

The following annotations are not
a part of this plat

Received with letter dated
Vol. 21, 1943 No. 1220706
From Supervisor of
Surveys
Posted in Div. "E" 1/22/47 RL
Vol. 74, pg. 14
Plat officially filed
January 29, 1947
Miscellaneous 1890706

0 5 10 20
SCALE 1 INCH EQUALS 10 CHAINS

AREA SURVEYED, 124.57 ACRES.

LINES DESIGNATED	BY WHOM SURVEYED	GROUP NO	DATE OF SPECIAL INSTRUCTIONS	WHEN SURVEYED	
				BEGUN	COMPLETED
EXTERIOR SUBDIVISIONAL MEANDER	HAL D CRAIG NORVILLE E SHEARER	55	JULY 10, 1942	JULY 27, 1942	OCTOBER 1, 1942

UNITED STATES DEPARTMENT OF THE INTERIOR.
GENERAL LAND OFFICE.

DENVER, COLORADO, JULY 21, 1943.
THIS PLAT OF SECTION 19, TOWNSHIP NO. 36 NORTH, RANGE NO. 8 EAST, OF THE FOURTH PRINCIPAL MERIDIAN, WISCONSIN, IS STRICTLY CONFORMABLE TO THE FIELD NOTES OF THE SURVEY THEREOF, WHICH HAVE BEEN EXAMINED AND APPROVED.

Russell F. Allen
ACTING ASSISTANT
SUPERVISOR OF SURVEYS.

WASHINGTON, D. C., DECEMBER 23, 1943.
THE SURVEY REPRESENTED BY THIS PLAT, HAVING BEEN CORRECTLY EXECUTED IN ACCORDANCE WITH THE REQUIREMENTS OF LAW AND THE REGULATIONS OF THIS OFFICE, IS HEREBY ACCEPTED.

Joel David Wolfson
ASSISTANT COMMISSIONER.

W N R

TOPOGRAPHY WITHIN PUBLIC LAND AREA COMPILED FROM AERIAL PHOTOGRAPHS
AND COORDINATED WITH CONTROL OBTAINED DURING SURVEY.

rwf
494