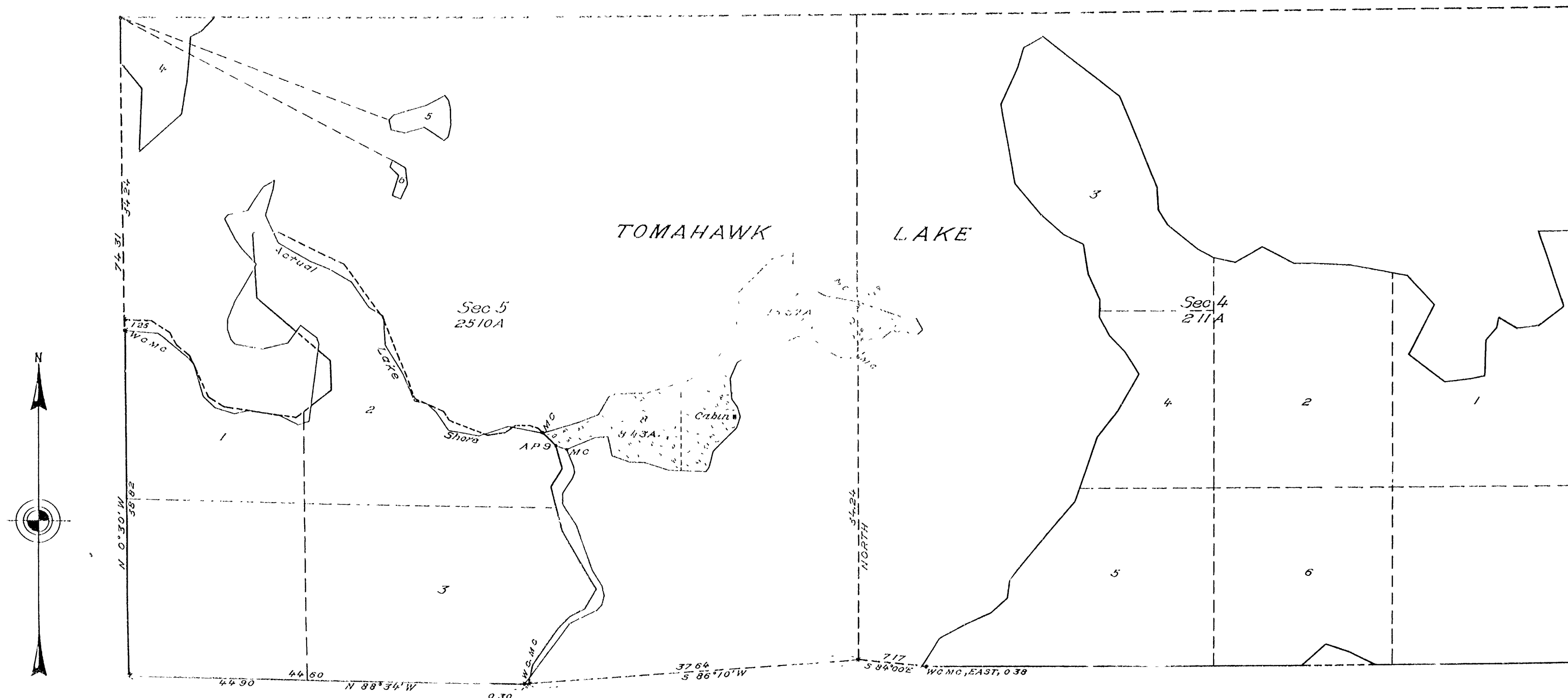


RECEIVED & FILED # 31748
 On to City Surveyor's Office
 Date OCT 14 1928
 By mae
 GCS Area #

Supplemental Plat of Secs. 4 and 5, T. 38 N., R. 7 E., 4th Prin. Mer., Wisconsin.



MEMORANDUM.

This plat delineates a retracement and reestablishment of the lines defining lands in fractional Section 5, Township 38 North, Range 7 East, as shown upon the plat of the original survey approved January 19, 1864, in their true original positions according to the best available evidence of the original corners, and an extension survey including lands in Sections 4 and 5 which were erroneously omitted from the original survey and not shown upon said plat. The position of the original meander line in front of Lots 1, 2 and 3 of Section 5 is shown by a heavy irregular line. A portion of this line, between angle points 9 and 10, was erroneously surveyed and has been reestablished as a fixed limiting boundary of the lands included in the original survey and those erroneously omitted therefrom, with adjusted courses and distances based upon the record of the original survey. All differences between the measurements shown on the original plat and those derived in the retracement have been distributed proportionally between accepted corners in accordance with surveying rules.

Titles and areas based upon the original plat remain undisturbed for position and description.

LEGEND.

Scale: 1 inch = 10 chains.

Surveyed by Jos. C. Thoma and Earl G. Harrington, U. S. Cadastral Engineers, from August 25 to September 13, 1927, inclusive, under special instructions for Group No. 19, Wisconsin, dated June 2, 1927, issued by Arthur D. Kidder, Associate Supervisor of Surveys, which were approved by the Commissioner of the General Land Office on June 7, 1927.

Area of lands surveyed = 27.21 Acres.

Areas of previously surveyed lands not shown

Office of U. S. Supervisor of Surveys.

Denver, Colorado, December 3, 1927.

The above supplemental plat of Sections 4 and 5, Township 38 North, Range 7 East, of the Fourth Principal Meridian, in the State of Wisconsin, is strictly conformable to the field notes of the survey thereof, which have been examined and approved.

Stanley Johnson
 U. S. Supervisor of Surveys.

DEPARTMENT OF THE INTERIOR.

GENERAL LAND OFFICE

Washington, D. C., May 18, 1928.

The survey represented by this plat, having been correctly executed in accordance with the requirements of law and the regulations of this office, is hereby accepted.

Charles E. Vance
 Assistant Commissioner.