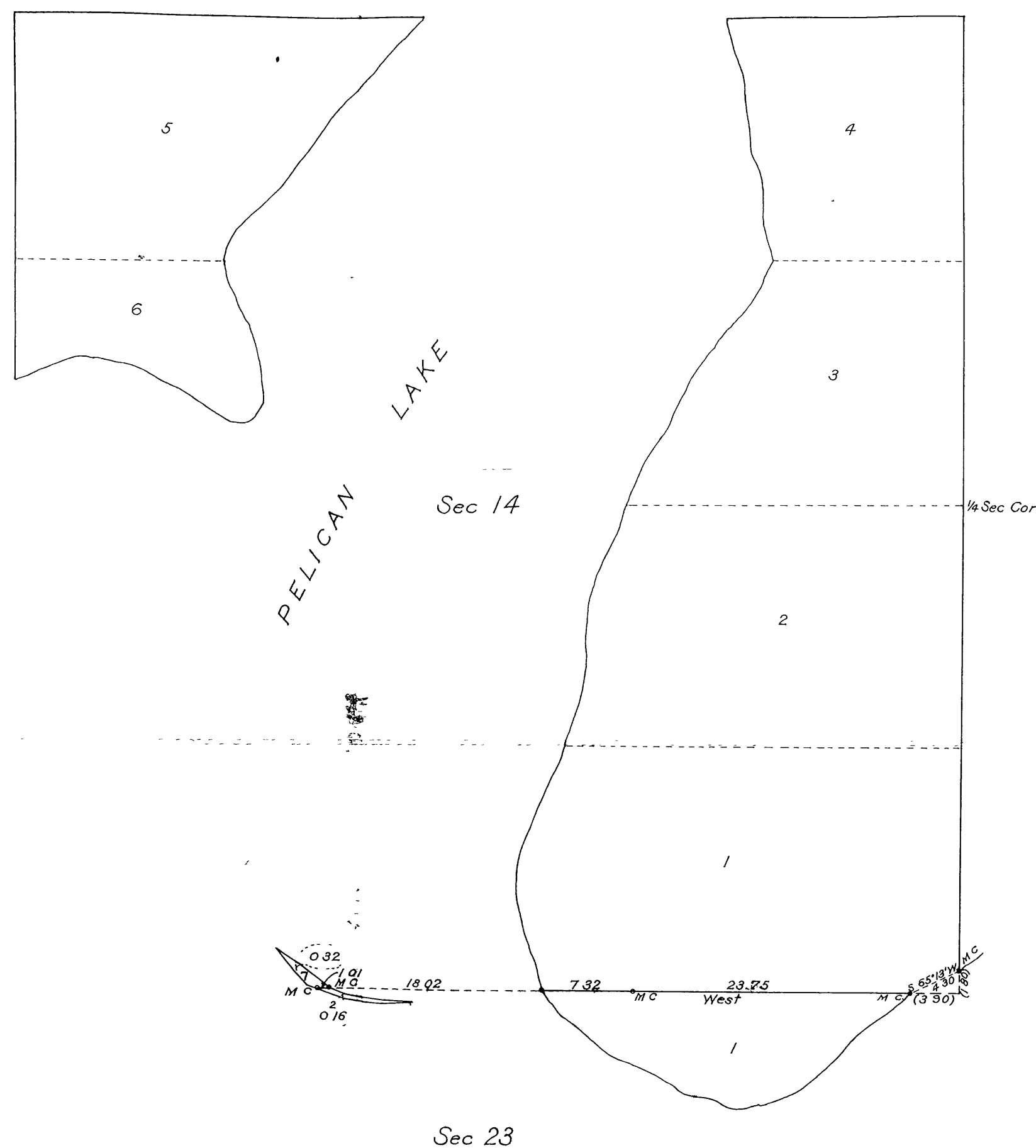


RECEIVED & FILED
Oceida County Surveyor's Office
OCT 21 1908
Date
OCS Area #

PLAT OF AN ISLAND IN
PELICAN LAKE
in Secs 14 and 23, T 35 N, R 10 E, 4th P M
WISCONSIN

Surveyed by Walter E. Hoffmann, U S Surveyor, September 4-6, 1912,
under special instructions from the Com^r G L O, bearing date June 28, 1912.
Scale 10 chs to an inch.



Department of the Interior,
General Land Office,
Washington, D.C., Nov. 5, 1914

The above is a correct plat of survey of an Island in Pelican Lake in
Secs 14 and 23, T 35 N, R 10 E, 4th P M, Wisconsin, executed by Walter
E. Hoffmann, U S Surveyor, in pursuance of special instructions from
the Commissioner of the Gen^l Land Office, bearing date June 28, 1912,
and is strictly conformable to the field notes of survey thereof on file in
this office, which have been examined and approved

C. M. Bruce
Acting Commissioner and ex-officio
U.S. Surveyor General for Wisconsin