

OCT 21 1888

By *mag*

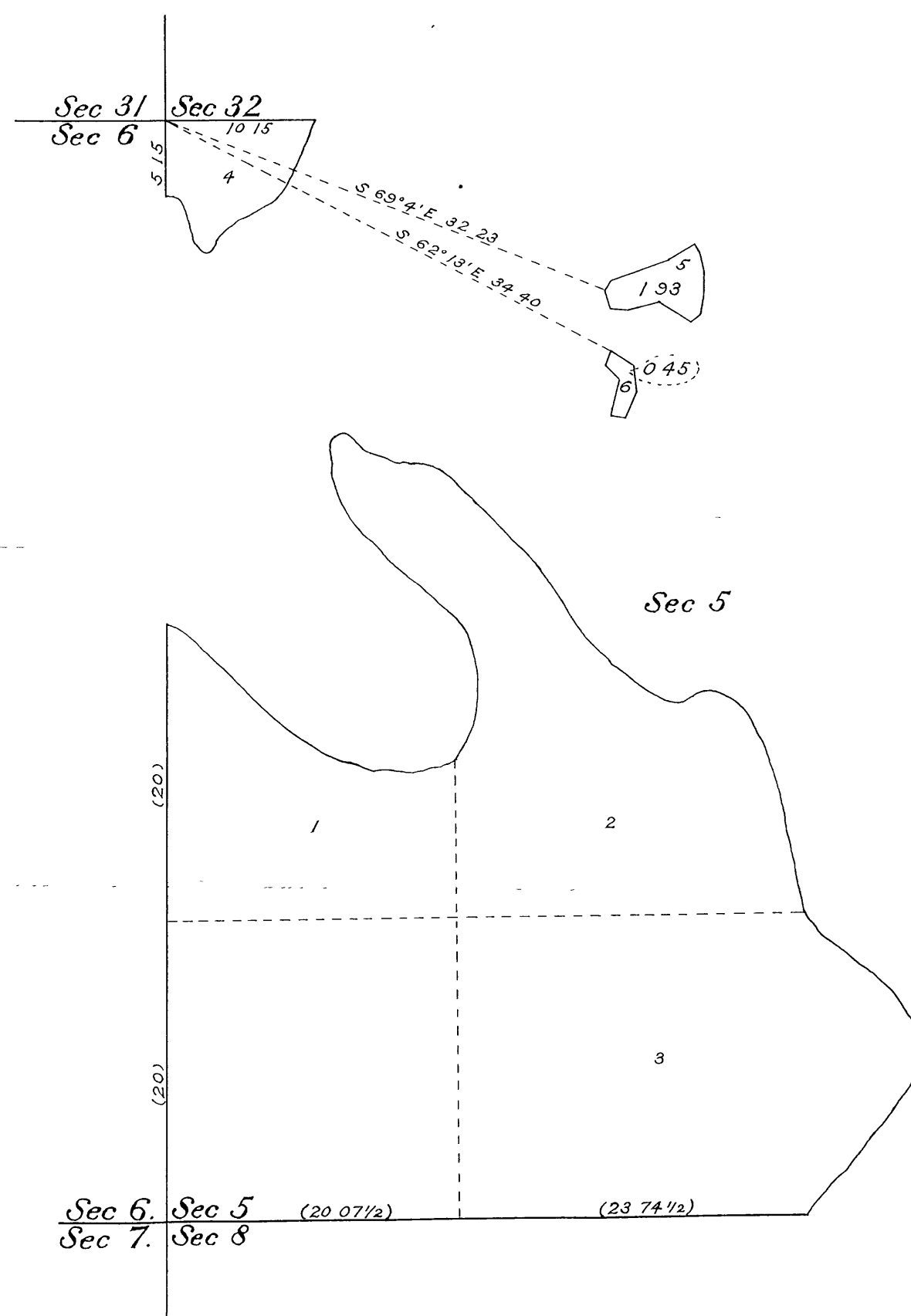
CCS Area 1/2

9215

PLAT OF TWO ISLANDS
in Sec 5, T 38 N, R 7 E, 4th P M
WISCONSIN.

Surveyed by Walter E Hoffman, U S Surveyor, September 2-3, 1912,
under special instructions from the Com^r G L O, bearing date June 28, 1912.

Scale 10 chs to an inch.



JL

Department of the Interior,
General Land Office,
Washington, D.C., Nov 5, 1914

The above is a correct plat of survey of two islands in Sec 5, T 38 N,
R 7 E, 4th P M, Wisconsin, executed by Walter E Hoffman, U S Surveyor,
in pursuance of special instructions from the Commissioner of the General
Land Office, bearing date June 28, 1912, and is strictly conformable to the
field notes of survey thereof on file in this office, which have been examined
and approved

C. M. Bruce
Acting Commissioner and ex-officio
U S Surveyor General for Wisconsin