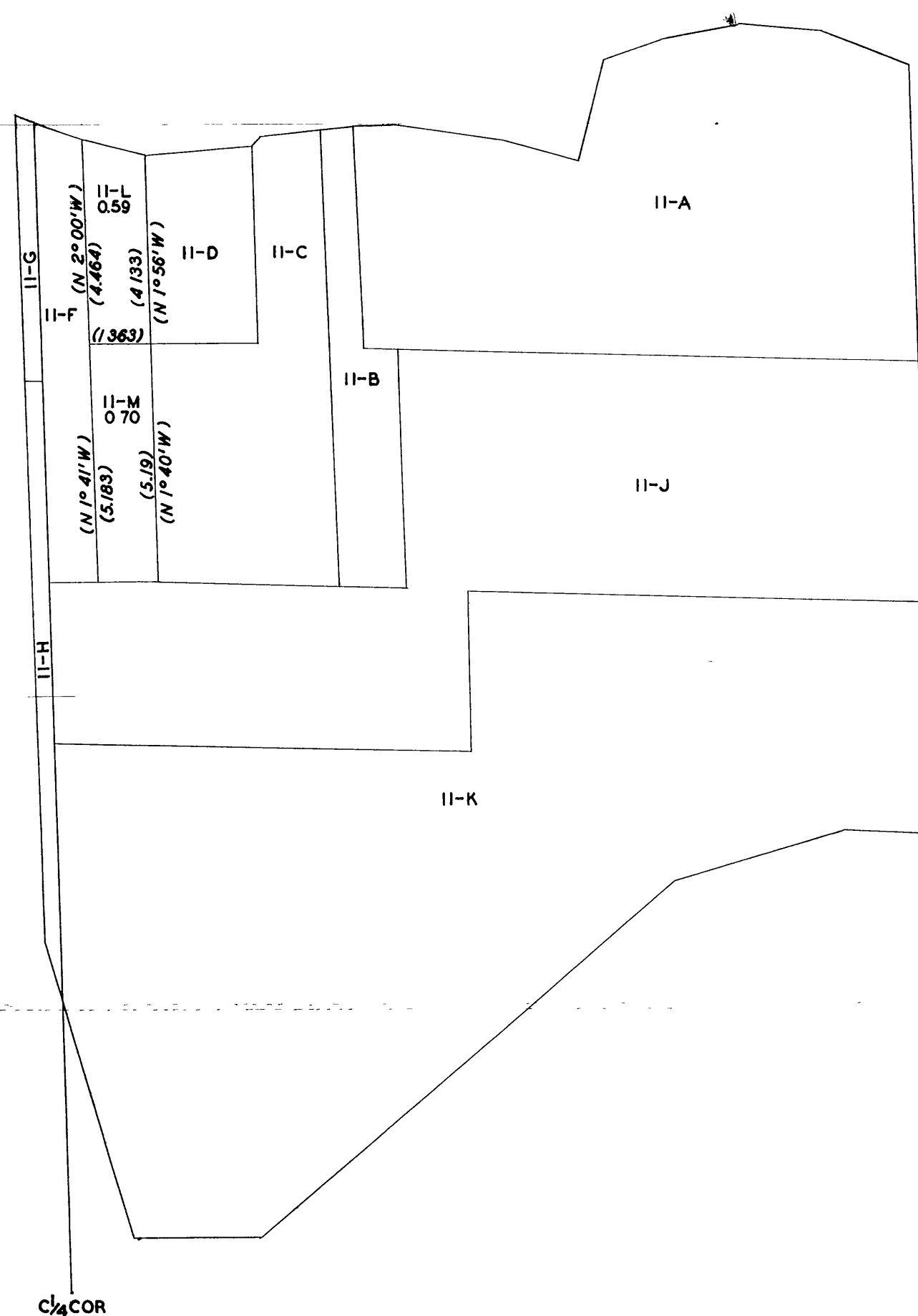


RECEIVED & INDEXED
Oreola County Survey
Date OCT 21 1958
By mgl
OCS Area #

ORIGINAL

TOWNSHIP 39 NORTH, RANGE 11 EAST, FOURTH PRINCIPAL MERIDIAN, WISCONSIN
SUPPLEMENTAL PLAT OF LOT 11, SECTION 31

TRUE MERIDIAN



0 1 2 3 4 5 6 7 8
SCALE IN CHAINS

This supplemental plat, based upon the plat accepted November 16, 1953, has been prepared as an administrative measure to provide areas and designations in the subdivision of former Lot 11-E, sec. 31, in accordance with the Director's decision of November 10, 1958 (BLM 040719, Wisconsin). The new lots are designated as Lot 11-L and Lot 11-M.

UNITED STATES DEPARTMENT OF THE INTERIOR
BUREAU OF LAND MANAGEMENT
Washington, D.C. December 16, 1958

This plat, showing amended lottings, is based upon the official records, and having been correctly prepared in accordance with the regulations, is hereby accepted.

For the Director
Earl G. Harrington
Cadastral Engineering Staff Officer

RLS