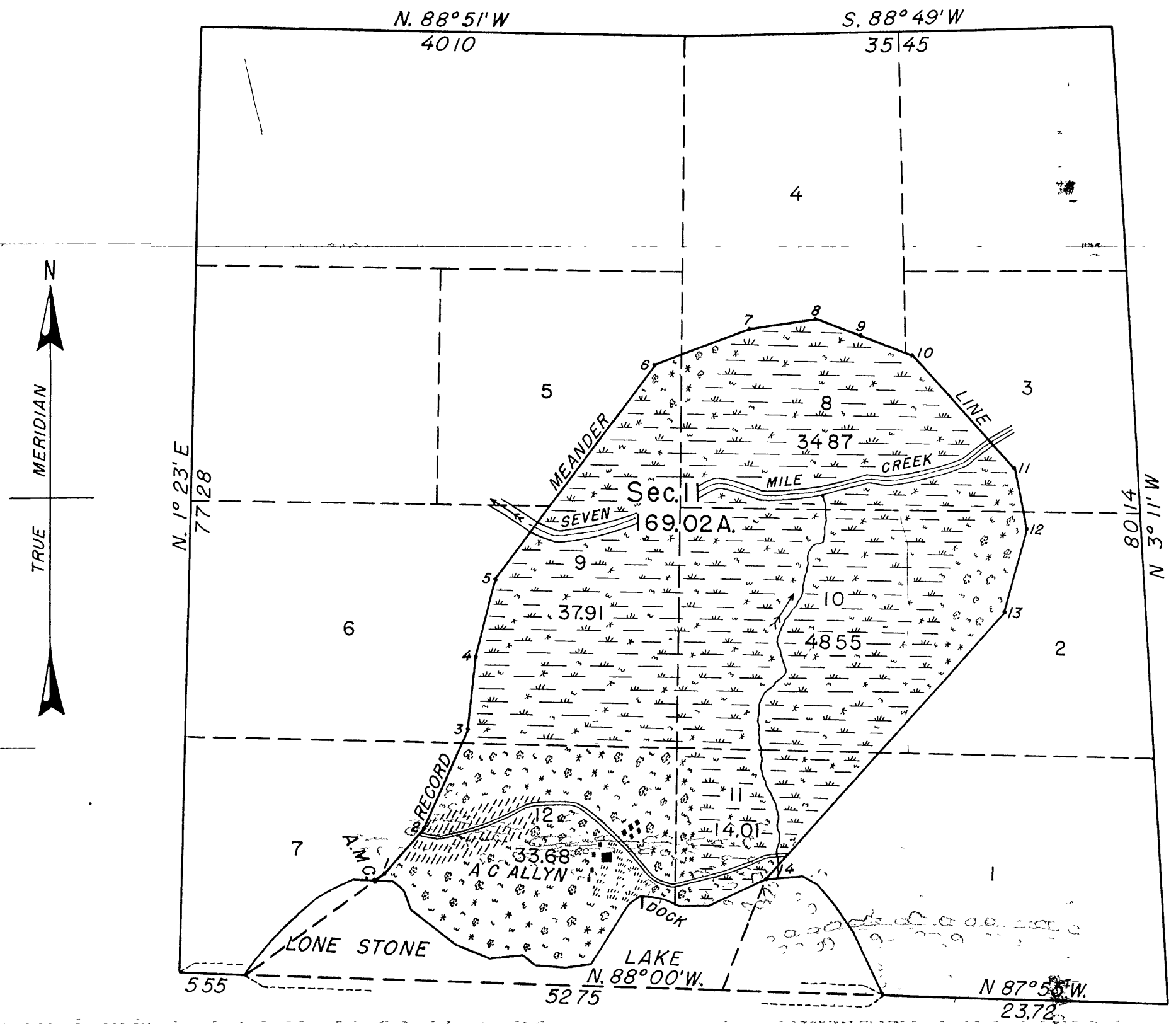


31362
Omnida County Surveyor's Office
OCT 21 1988
Date
By
CDS Area #

ORIGINAL

TOWNSHIP NO.39 NORTH, RANGE NO.11 EAST, OF THE FOURTH PRINCIPAL MERIDIAN, WISCONSIN.
EXTENSION SURVEY, SECTION 11.



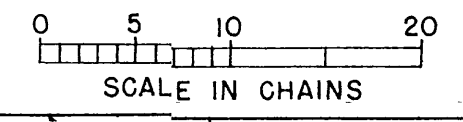
MEMORANDUM.

THIS PLAT REPRESENTS THE SURVEY OF PUBLIC LAND WHICH WAS NOT INCLUDED IN THE ORIGINAL SURVEY OF THE TOWNSHIP, SHOWN UPON THE PLAT APPROVED ON FEBRUARY 4, 1860. THE RESURVEY OF THE SECTION BOUNDARIES IS SHOWN UPON THE PLAT APPROVED OCTOBER 1, 1943.

THE POSITION OF THE ORIGINAL RECORD-MEANDER COURSES OF THE LAKE IN SECTION 11 IS SHOWN BY AN IRREGULAR LINE WITH NUMBERED ANGLE POINTS. THIS LINE, AS THUS ORIGINALLY REPORTED, WAS GROSSLY IN ERROR AND, WITH THE EXCEPTION OF CERTAIN COURSES FRONTING ON LOTS 1 AND 7, HAS THEREFORE BEEN ESTABLISHED AS A FIXED BOUNDARY, WITH THE DIRECTIONS AND LENGTHS OF THE SEVERAL COURSES ADJUSTED TO THE POINTS CALLED FOR ON THE SECTION BOUNDARY.

THE SURVEY WAS EXECUTED PURSUANT TO AUTHORITY CONTAINED IN GENERAL LAND OFFICE MEMORANDUM 1858603 "E" DATED MAY 21, 1943.

4-498 ORIGINAL
The following annotations are not a part of this plat
Received with letter dated
June 27, 1945 No. 1258603
From Supervisor of
Survey
Posted in Div. 5/5/48 782
Vol. 72 - pg. 98
Plat official filed
December 17, 1947
Miscellaneous 1858603
103338



AREA SURVEYED, 169.02 ACRES.

LINES DESIGNATED	BY WHOM SURVEYED	GROUP NO	DATE OF SPECIAL INSTRUCTIONS	WHEN SURVEYED	
				BEGUN	COMPLETED
MEANDER	HAL D. CRAIG	51	MAY 25, 1943.	SEPTEMBER 17, 1943	SEPTEMBER 23, 1943

UNITED STATES DEPARTMENT OF THE INTERIOR.
GENERAL LAND OFFICE.

DENVER, COLORADO, JUNE 26, 1945.
THIS PLAT OF SECTION 11, TOWNSHIP NO. 39 NORTH, RANGE NO. 11 EAST, OF THE FOURTH PRINCIPAL MERIDIAN, WISCONSIN, IS STRICTLY CONFORMABLE TO THE FIELD NOTES OF THE SURVEY THEREOF, WHICH HAVE BEEN EXAMINED AND APPROVED.

WASHINGTON, D. C., DECEMBER 7, 1945.
THE SURVEY REPRESENTED BY THIS PLAT, HAVING BEEN CORRECTLY EXECUTED IN ACCORDANCE WITH THE REQUIREMENTS OF LAW AND THE REGULATIONS OF THIS OFFICE, IS HEREBY ACCEPTED.

W. N. R.
SUPERVISOR OF SURVEYS.

W. N. R.
Acting ASSISTANT COMMISSIONER.

W.N.R