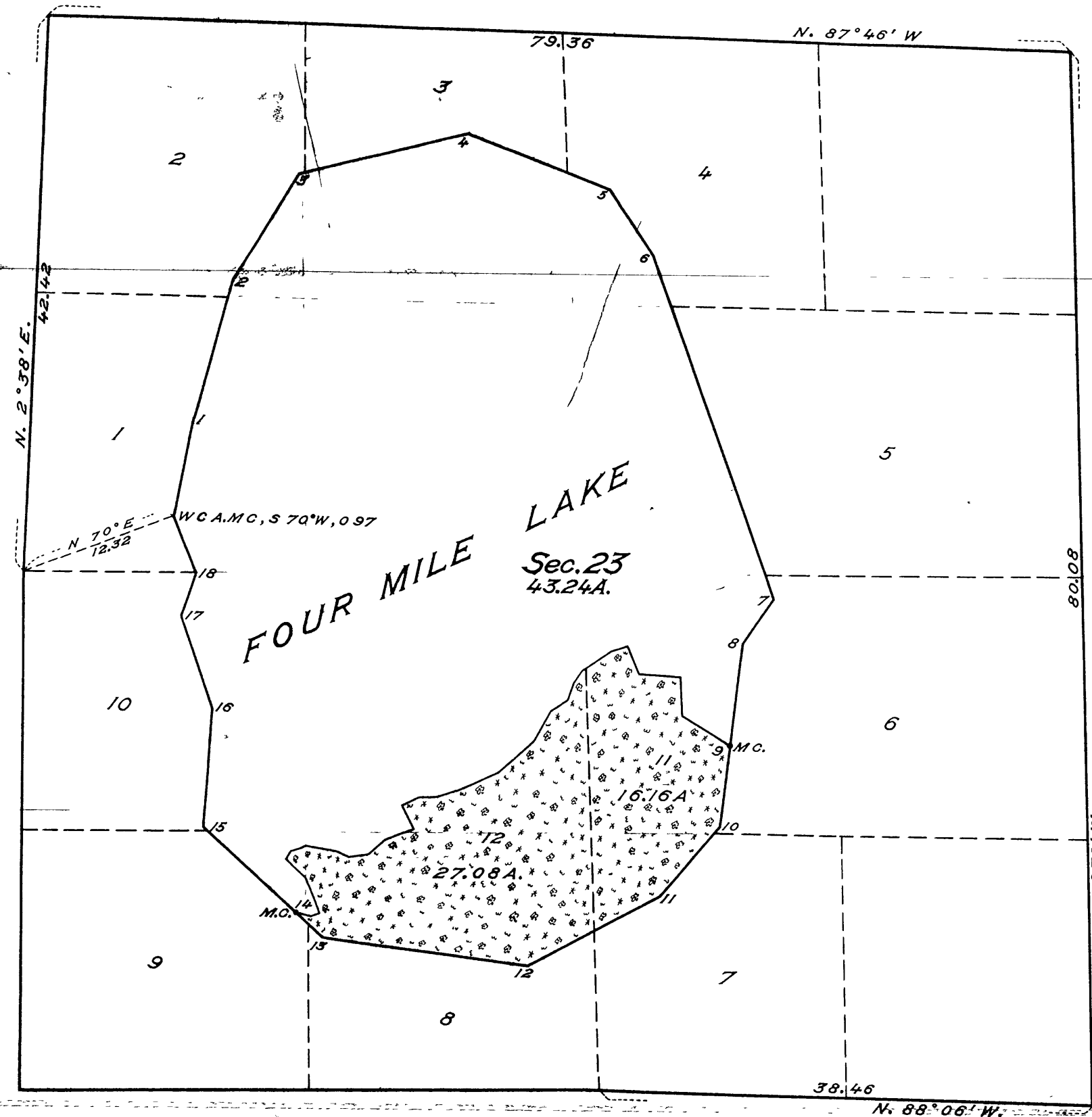


Supplemental Plat of Sec. 23, T. 39 N., R. 11 E., 4th Prin. Mer., Wisconsin.



MEMORANDUM.

This plat delineates a retracement and reestablishment of the lines defining lands in Section 23, Township 39 North, Range 11 East, of the Fourth Principal Meridian, Wisconsin, as shown upon the plat of the original survey approved February 4, 1860, in their true original position according to the best available evidence of the position of the original corners, and an extension survey including lands erroneously omitted from the original survey and not shown upon said plat.

The position of the meander line of Four Mile Lake, according to the field-note record of the survey of 1859, is delineated by a heavy irregular line; a portion of this line was erroneously located. Riparian rights, under the usual doctrine, do not attach to the lands in front of the record meander line in those cases where erroneously located. In such cases said meander line has been reestablished as a fixed boundary, with adjusted courses based upon the record of the original survey.

Titles and areas based upon the original plat remain undisturbed for position and description.

LEGEND.

Scale: 1 inch = 10 chains.

Surveyed by Guy R. Veal, U. S. Cadastral Engineer, assisted by Wesson Cook, U. S. Transitman, from October 12 to 24, 1926, inclusive, under special instructions for Group No. 15, Wisconsin, dated June 21, 1926, issued by Frank M. Johnson, Supervisor of Surveys, which were approved by the Commissioner of the General Land Office on July 8, 1926.

Area of land surveyed = 43.24 Acres, not shown upon the official plat approved February 4, 1860.

Areas of previously surveyed lands not shown.

Office of U. S. Supervisor of Surveys.
Denver, Colorado, July 12, 1927.

The above supplemental plat of Section 23, Township 39 North, Range 11 East, of the Fourth Principal Meridian, in the State of Wisconsin, is strictly conformable to the field notes of the survey thereof, which have been examined and approved.

Frank M. Johnson
U. S. Supervisor of Surveys.

DEPARTMENT OF THE INTERIOR
GENERAL LAND OFFICE

Washington, D. C., August 22, 1927.

The survey represented by this plat, having been correctly executed in accordance with the requirements of law and the regulations of this office, is hereby accepted.

D. H. Barrett
Acting Assistant Commissioner.

ORIGINAL

The following is a true and correct copy of the original plat of the land described in the foregoing plat.

Received with title of
1188790-42-16-17
From: *John R. Johnson*

Posted in D.H. *John R. Johnson*
Plat filed in *John R. Johnson*

Microfilm *John R. Johnson*