

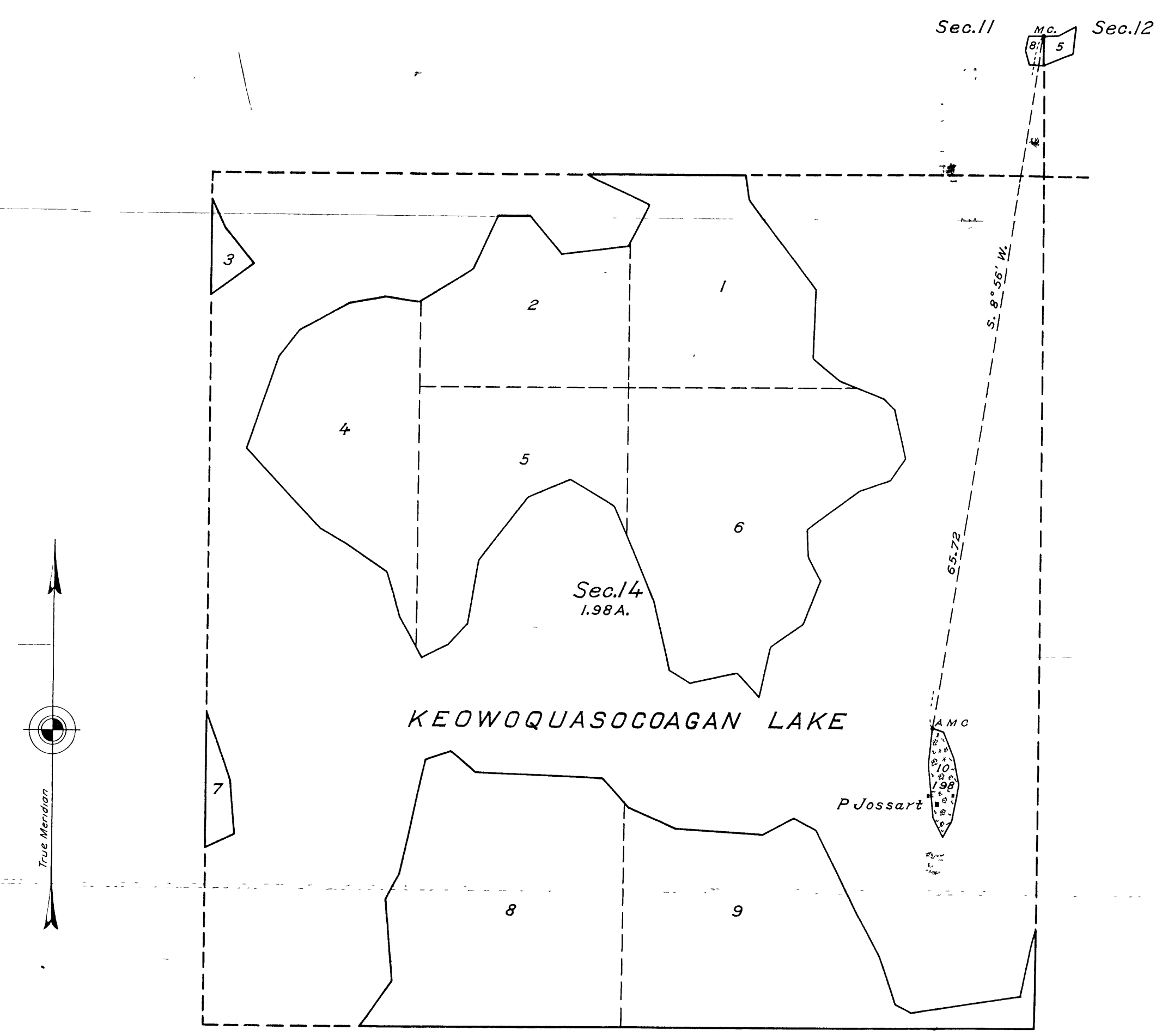
RECEIVED & FILED  
Oreida County Surveyor's Office  
OCT 21 1928  
Date  
By  
OCS Area #

(4-675b)

ORIGINAL

# TOWNSHIP N°39 NORTH RANGE N° 6 EAST, 4TH PRINCIPAL MERIDIAN, WISCONSIN.

## SURVEY OF AN ISLAND IN SECTION 14.



### MEMORANDUM

This plat represents the survey of an island in Keowoquasocoagan Lake which was not shown on the official township plat approved May 12, 1864. The survey was executed pursuant to authority contained in General Land Office letter 1272637 "E", dated February 13, 1928, which bears departmental approval under date of February 20, 1928.

**ORIGINAL**  
**DUPLICATE PLAT**  
The following annotations are not a part of this plat

Received with letter dated 1272637- April 3, 1929

From Arthur D. Klausner

Posted in Div. "O" Vol. 78 p. 111  
May 10, 1930

Plat filed in local land office April 30, 1930-1272637

Miscellaneous

Mean Magnetic Declination      Scale 10 Chains to an Inch      Area Surveyed, 198 Acres

LINES DESIGNATED	BY WHOM SURVEYED	No	GROUP DATE	MILEAGE MLS CHS	WHEN SURVEYED BEGUN COMPLETED
Exterior	JOSEPH C. THOMA	24	MAY 4, 1928.		JUNE 12, JUNE 14, 1928.
Subdivisional	U.S.C. ENGINEER			0 21.76	
Meander				0 65.72	
Miscellaneous					

Office of U.S. Supervisor of Surveys  
Denver, Colorado, March 14, 1929.  
The above plat of Township No 39 North, Range No. 6 East, of the Fourth Principal Meridian, Wisconsin, is strictly conformable to the field notes of the survey thereof which have been examined and approved

*Wm. H. Johnson*  
U.S. Supervisor of Surveys

DEPARTMENT OF THE INTERIOR  
GENERAL LAND OFFICE  
Washington, D.C., April 17, 1929  
The survey represented by this plat, having been correctly executed in accordance with the requirements of law and the regulations of this office, is hereby accepted

*J. K. O'Connell*  
Acting Assistant Commissioner