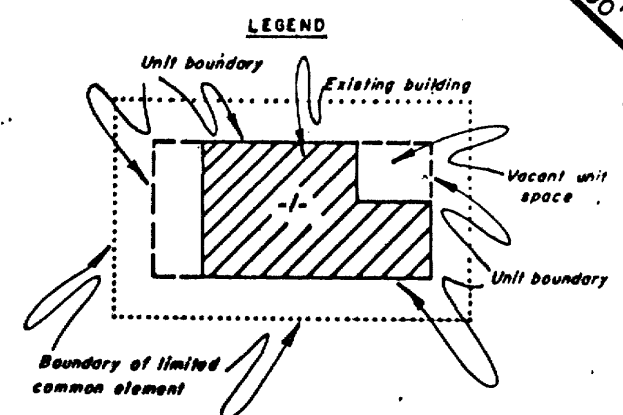
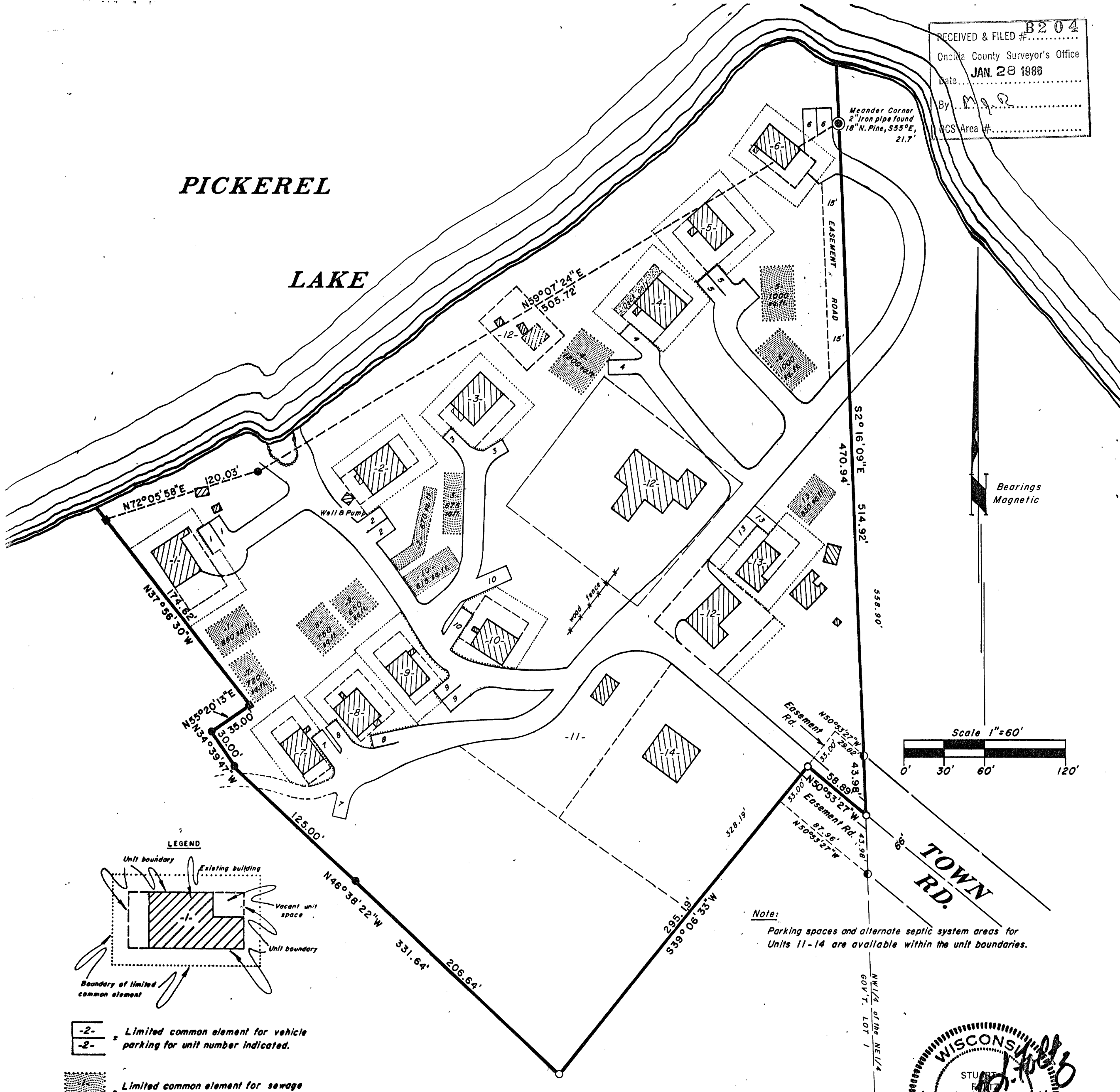


RECEIVED & FILED # B204  
 Oneida County Surveyor's Office  
 Date: JAN 23 1988  
 By: [Signature]  
 NCS Area #:



-2- Limited common element for vehicle parking for unit number indicated.

-1- Limited common element for sewage disposal, unit number and size.

- = 5" x 5" Conc. man. found
- = 2" Iron pipe found
- = 1" Iron pipe found
- = 1" x 30" Iron pipe set
- ▨ = Underground portion of pump house.

# PICKEREL LAKE RESORT CONDOMINIUMS

Part of

## GOV'T. LOT 1 SECTION 8, T39N, R8E

Newbold Township  
 Oneida County, Wisconsin



I, Stuart L. Foltz, Registered Land Surveyor S-1170 hereby certify that this plat, consisting of 4 sheets, is a correct representation of Pickerel Lake Resort Condominiums, that the identification of each unit, the floor area of each existing building, and the location of the common elements can be determined from sheet 1 of this plat; and that diagrammatic floor plans of each unit and its approximate dimensions are shown on sheets 2 through 4 of this plat.

inman·foltz and associates, inc.  
 engineers      surveyors      architects  
 p.o. box u      minocqua, wisconsin 54548  
 (715) 358-8485