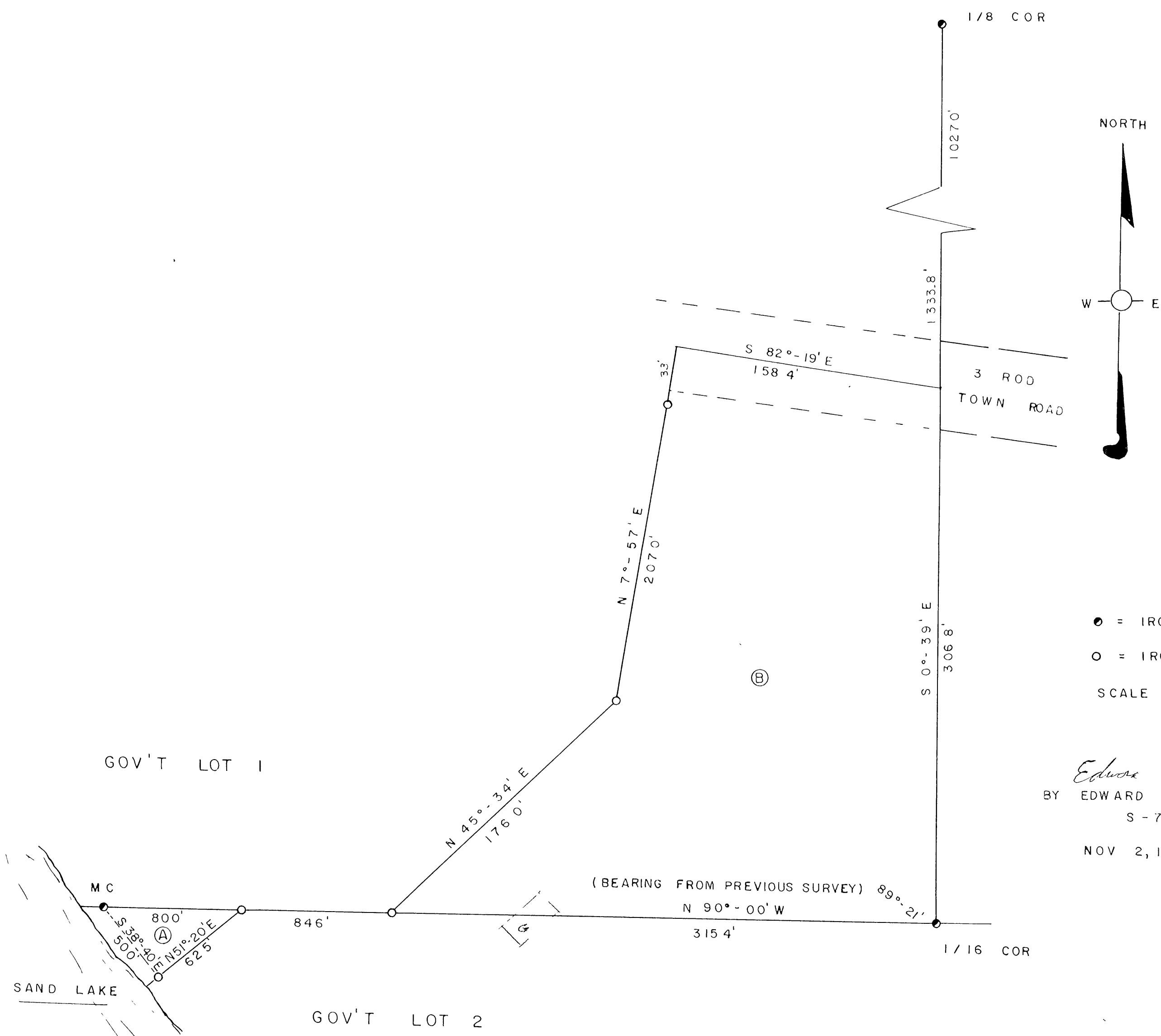


RECEIVED & FILED #B2067  
 Oneida County Surveyor's Office  
 Date FEB 2 1969  
 By M.R.  
 OCS Area #



BY *Edward H. McNow*  
 EDWARD H MC NOW  
 S - 760  
 NOV 2, 1968

FOR: L. D. SCHMIT  
 PARTS OF GOV'T LOTS 1 & 2, SECTION 21,  
 T 39N, R 9E  
 ONEIDA COUNTY, WISCONSIN

B2067