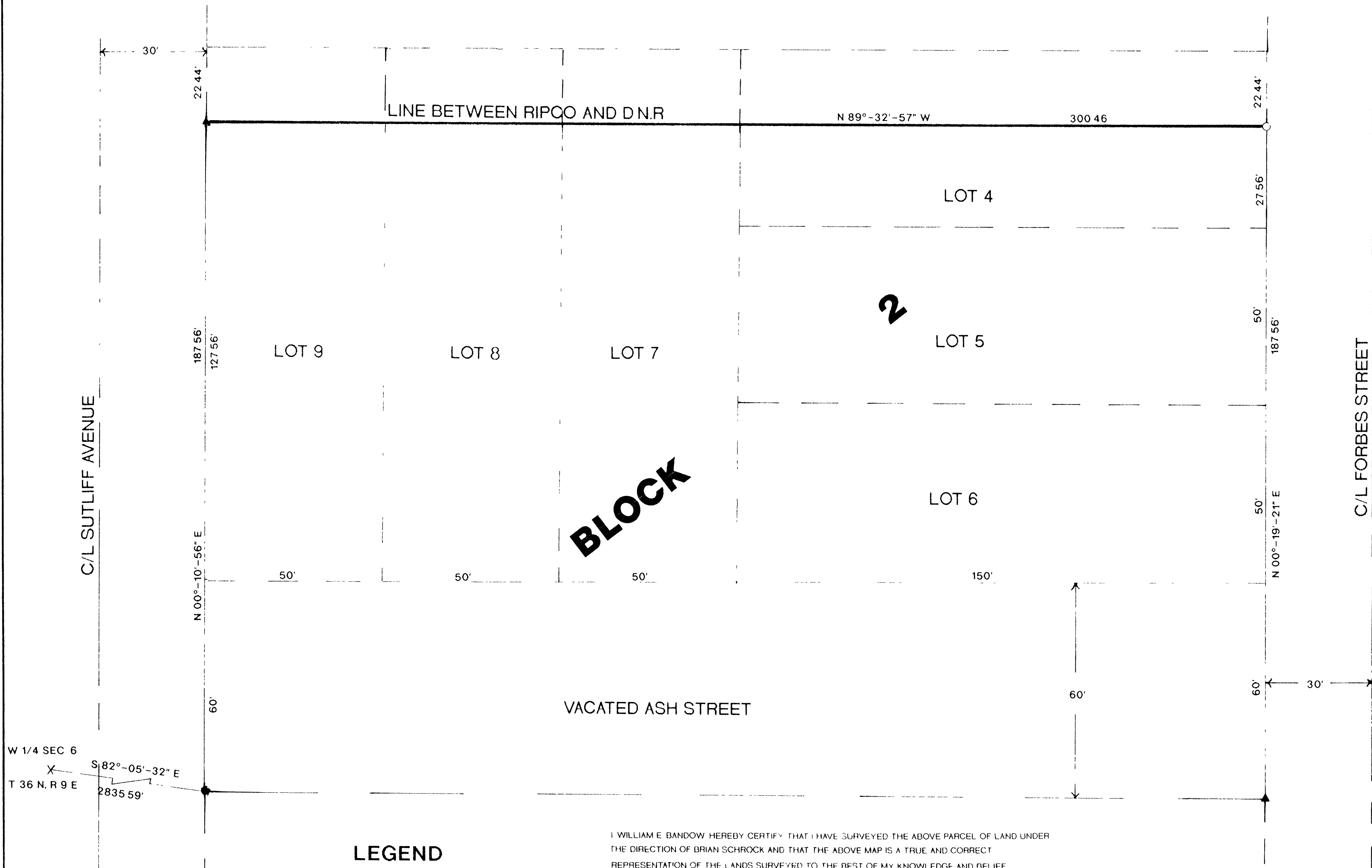
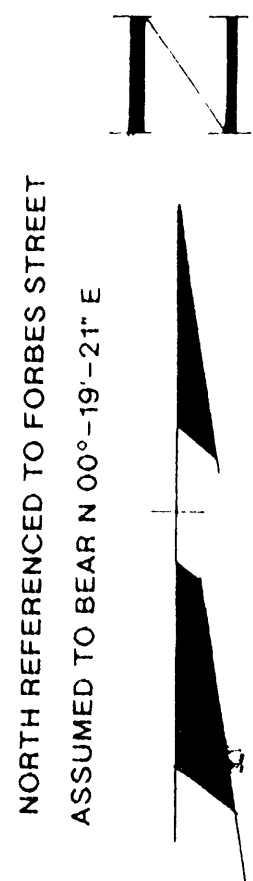


**PART OF BLOCK 2, CURRAN ADDITION  
TO THE CITY OF RHINELANDER, ONEIDA  
COUNTY, WISCONSIN**

RECEIVED & FILED #  
Oneida County Surveyor's Office  
AUG 27 1990  
Date By  
OCS Area #



**LEGEND**

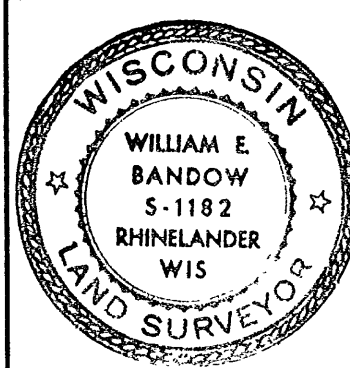
- SET RAILROAD SPIKE
- FOUND 1\"

I WILLIAM E. BANDOW HEREBY CERTIFY THAT I HAVE SURVEYED THE ABOVE PARCEL OF LAND UNDER THE DIRECTION OF BRIAN SCHROCK AND THAT THE ABOVE MAP IS A TRUE AND CORRECT REPRESENTATION OF THE LANDS SURVEYED TO THE BEST OF MY KNOWLEDGE AND BELIEF THAT I HAVE COMPLIED WITH THE PROVISIONS OF THE WISCONSIN ADMINISTRATIVE CODE

*William E. Bandow* 7-24-90

WILLIAM E. BANDOW

DATE



**DEBYLE REALTY  
C/O  
TESCHENDORF & SHROCK  
RHINELANDER, WI**

SCALE 1\"