


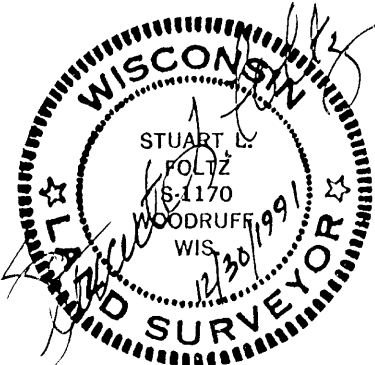
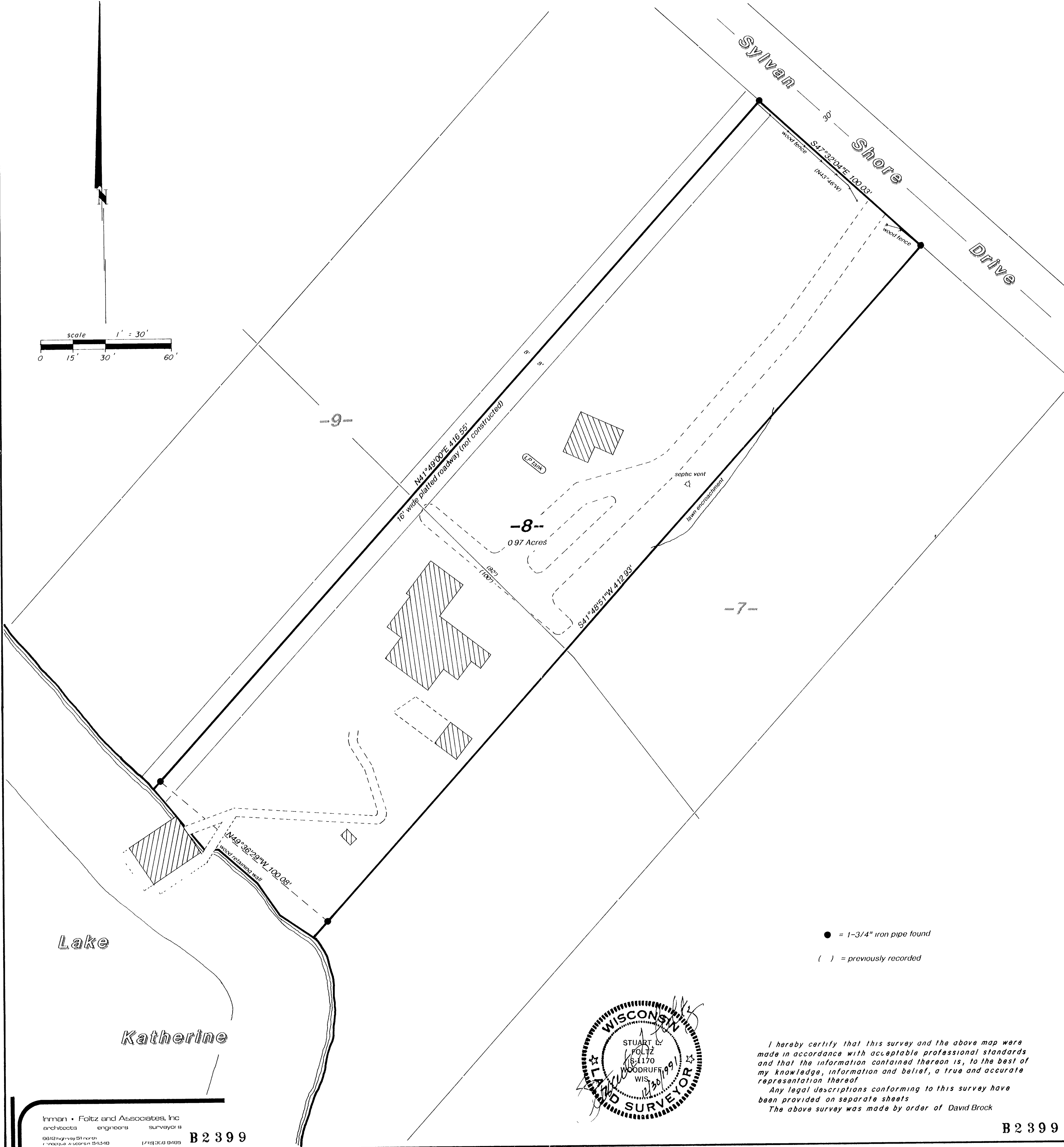
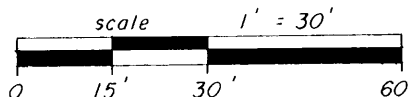
LOT 8
of
BLOCKS A and B
of the recorded plat of
SYLVAN SHORES
being part of

GOV'T. LOTS 1 and 2
SECTION 3, T38N, R6E

Town of Hazelhurst
Oneida County, Wisconsin

RECEIVED & FILED # . . .
Oneida County Surveyor's Office
Date **MAR. 3 1 1992**
By 
OCS #

Bearings Magnetic



I hereby certify that this survey and the above map were made in accordance with acceptable professional standards and that the information contained thereon is, to the best of my knowledge, information and belief, a true and accurate representation thereof.
Any legal descriptions conforming to this survey have been provided on separate sheets.
The above survey was made by order of David Brock

Inman • Foltz and Associates, Inc.
architects engineers surveyors
6612 Highway 51 North
Oneida, Wisconsin 54154
(715) 336-9489