

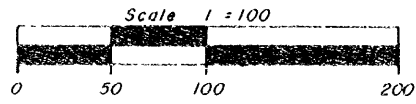
B 2 5 0 1

B 2 5 0 1

RECEIVED & FILED # . . .
Oneida County Surveyor's Office
Date **2681 1 2 .JES**
By
OCS Area # .

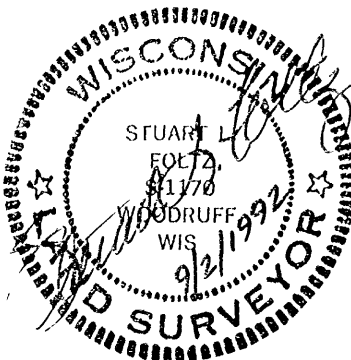
Part of the
SE 1/4
SECTION 1, T38N, R6E
Town of Hazelhurst
Oneida County, Wisconsin

Bearings Magnetic

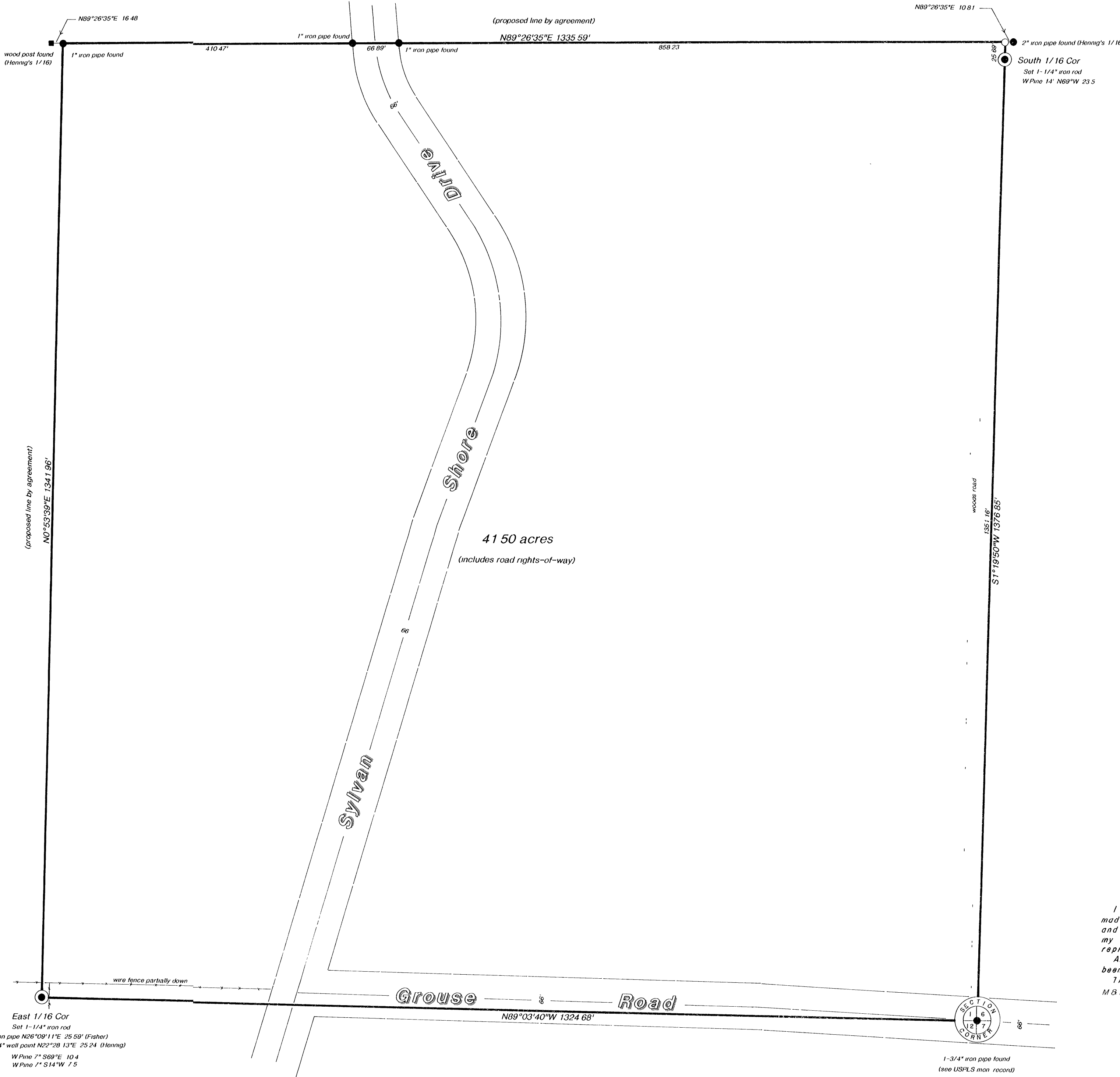


○ = 1" iron pipe set

I hereby certify that this survey and the above map were made in accordance with acceptable professional standards and that the information contained thereon is, to the best of my knowledge, information and belief, a true and accurate representation thereof.
Any legal descriptions conforming to this survey have been provided on separate sheets.
The above survey was made by order of Erich Schwenker, M&I Trust Co.



B 2 5 0 1



Note: Section subdivision information can be found on Oneida County Surveyor map number C-922

B 2 5 0 1