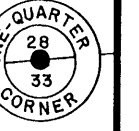


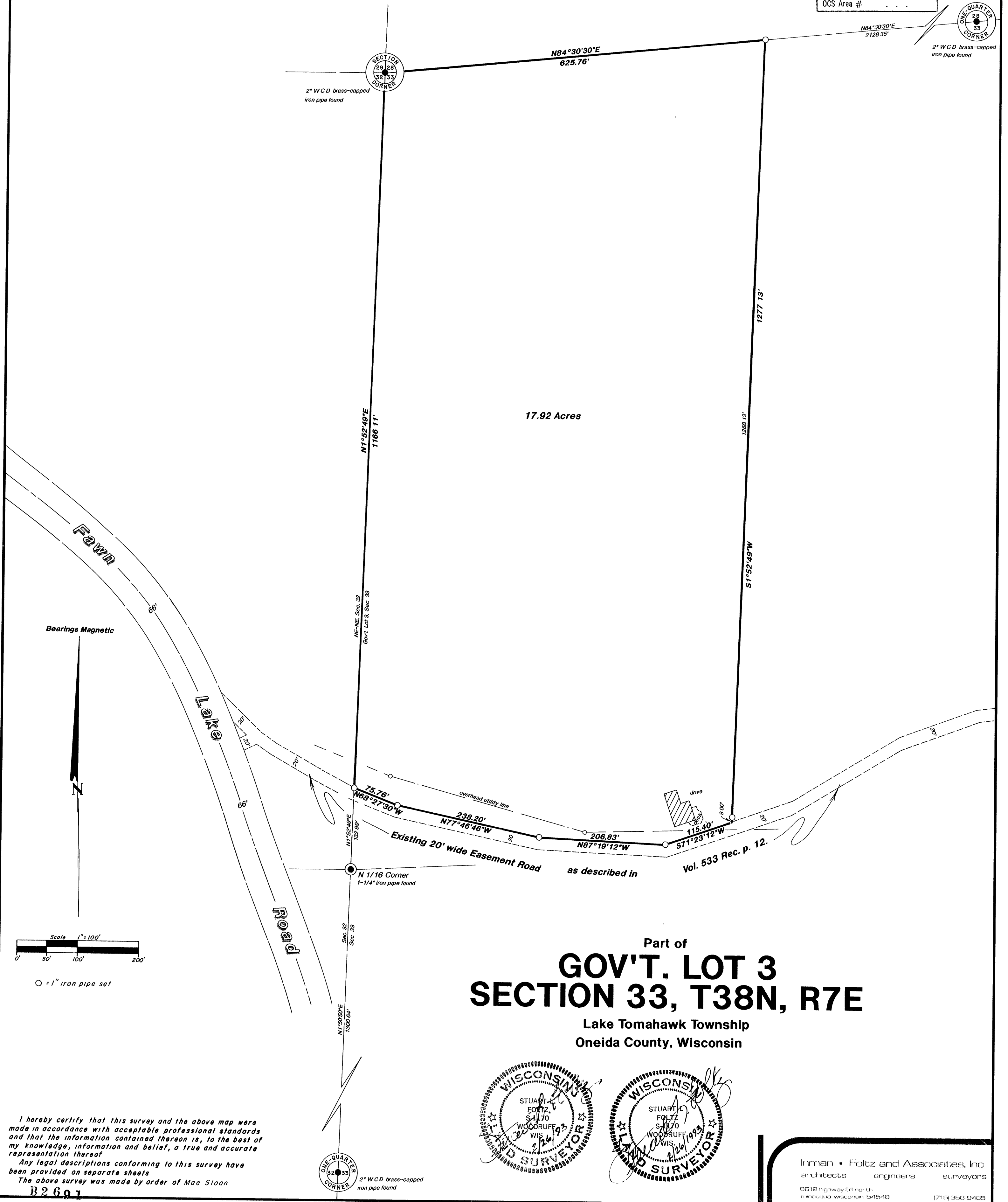
B2691

B2691

RECEIVED & FILED #... ..  
Oneida County Surveyor's Office  
Date **MAY 14 1993**  
By *[Signature]*  
OCS Area # .....



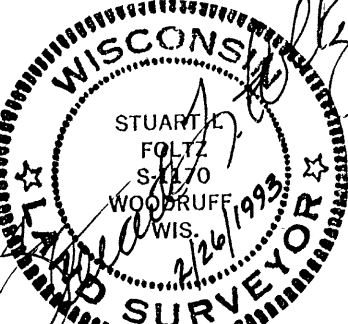
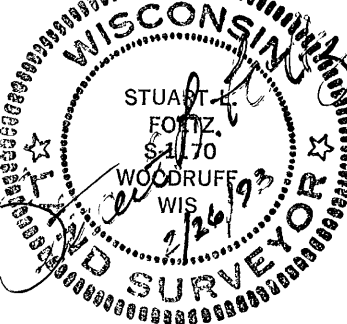
2" WCD brass-capped iron pipe found



I hereby certify that this survey and the above map were made in accordance with acceptable professional standards and that the information contained thereon is, to the best of my knowledge, information and belief, a true and accurate representation thereof.  
Any legal descriptions conforming to this survey have been provided on separate sheets.  
The above survey was made by order of Mae Sloan

B2691

Part of  
**GOV'T. LOT 3  
SECTION 33, T38N, R7E**  
Lake Tomahawk Township  
Oneida County, Wisconsin



Inman • Foltz and Associates, Inc.  
architects engineers surveyors  
9612 Highway 51 north  
Minneapolis, Wisconsin 55454  
(715) 350-9405

B2691 Winkler 4-33-387