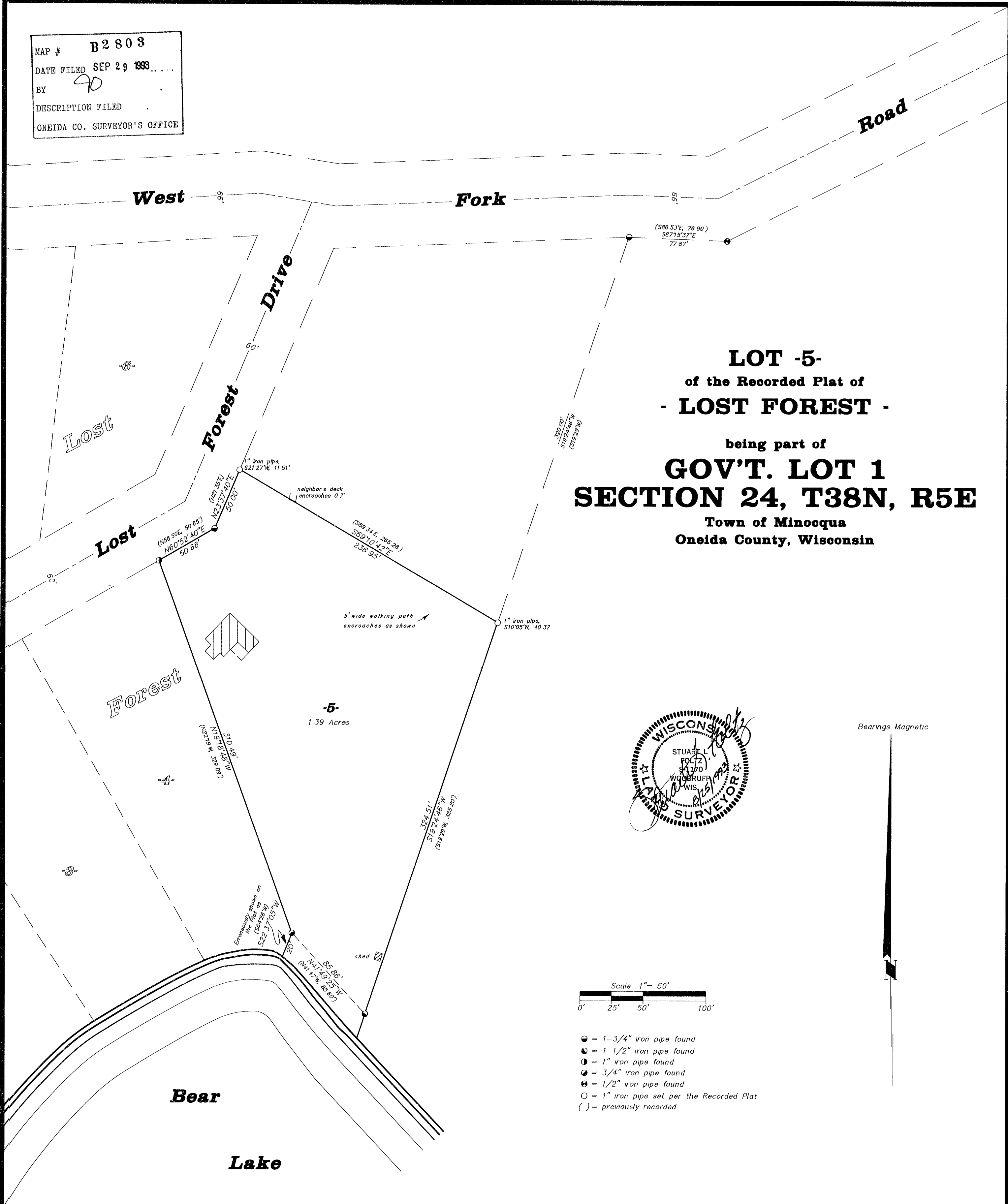


MAP # B2803  
DATE FILED SEP 29 1993  
BY 90  
DESCRIPTION FILED  
ONEIDA CO. SURVEYOR'S OFFICE



I hereby certify that this survey and the above map were made in accordance with acceptable professional standards and that the information contained thereon is, to the best of my knowledge, information and belief, a true and accurate representation thereof.  
Any legal descriptions conforming to this survey have been provided on separate sheets.  
The above survey was made by order of Constance M. Zunker

Inman Foltz and Associates, Inc.  
architects engineers surveyors  
8612 Highway 51 North  
Minocqua, Wisconsin 54548 (715) 356-9485