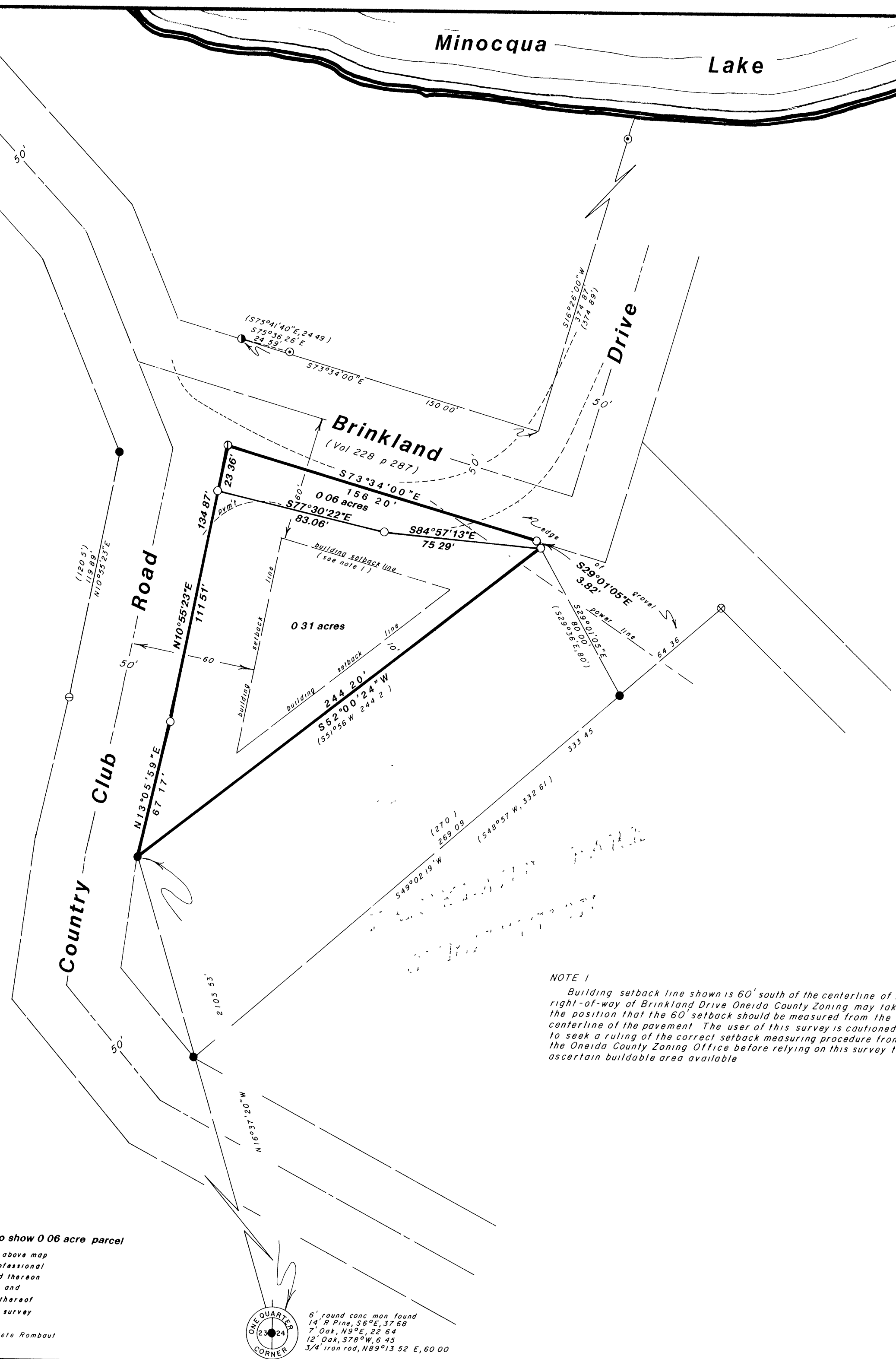


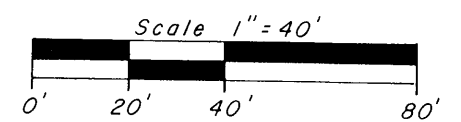
MAP # B 2 8 2 3
 DATE FILED OCT 21 1983
 BY [Signature]
 DESCRIPTION FILED
 ONEIDA CO SURVEYOR'S OFFICE

B 2 8 2 3

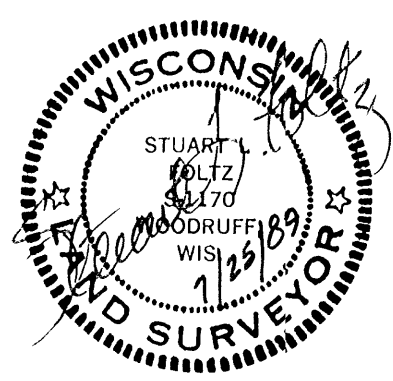
Part of the
NE1/4 OF THE NE1/4
SECTION 23, T39N, R6E
 Town of Minocqua
 Oneida County, Wisconsin



Bearings Assumed



- ⊖ = 3/4" iron pipe found
- ⊗ = 2" iron pipe with cap found
- ⊙ = 2 1/2" iron pipe found
- = 1-1/2" iron pipe found
- = 1" iron pipe set
- ⊕ = RR spike set
- () = previously recorded



Revised: 10/15/93, to show 0.06 acre parcel

I hereby certify that this survey and the above map were made in accordance with acceptable professional standards and that the information contained thereon is, to the best of my knowledge, information and belief, a true and accurate representation thereof. Any legal descriptions conforming to this survey have been provided on separate sheets. The above survey was made by order of Pete Rombaut.



6" round conc. man found
 14" R. Pipe, S6°E, 37.62
 7" Oak, N9°E, 22.64
 12" Oak, S78°W, 6.43
 3/4" iron rod, N89°13'52"E, 60.00

Inman • Foltz and Associates, Inc.
 architects engineers surveyors

43121 Highway 51, Box 11
 Oneida, WI 54981
 (715) 835-1111

C. Winkler 1-23-396

B 2 8 2 3