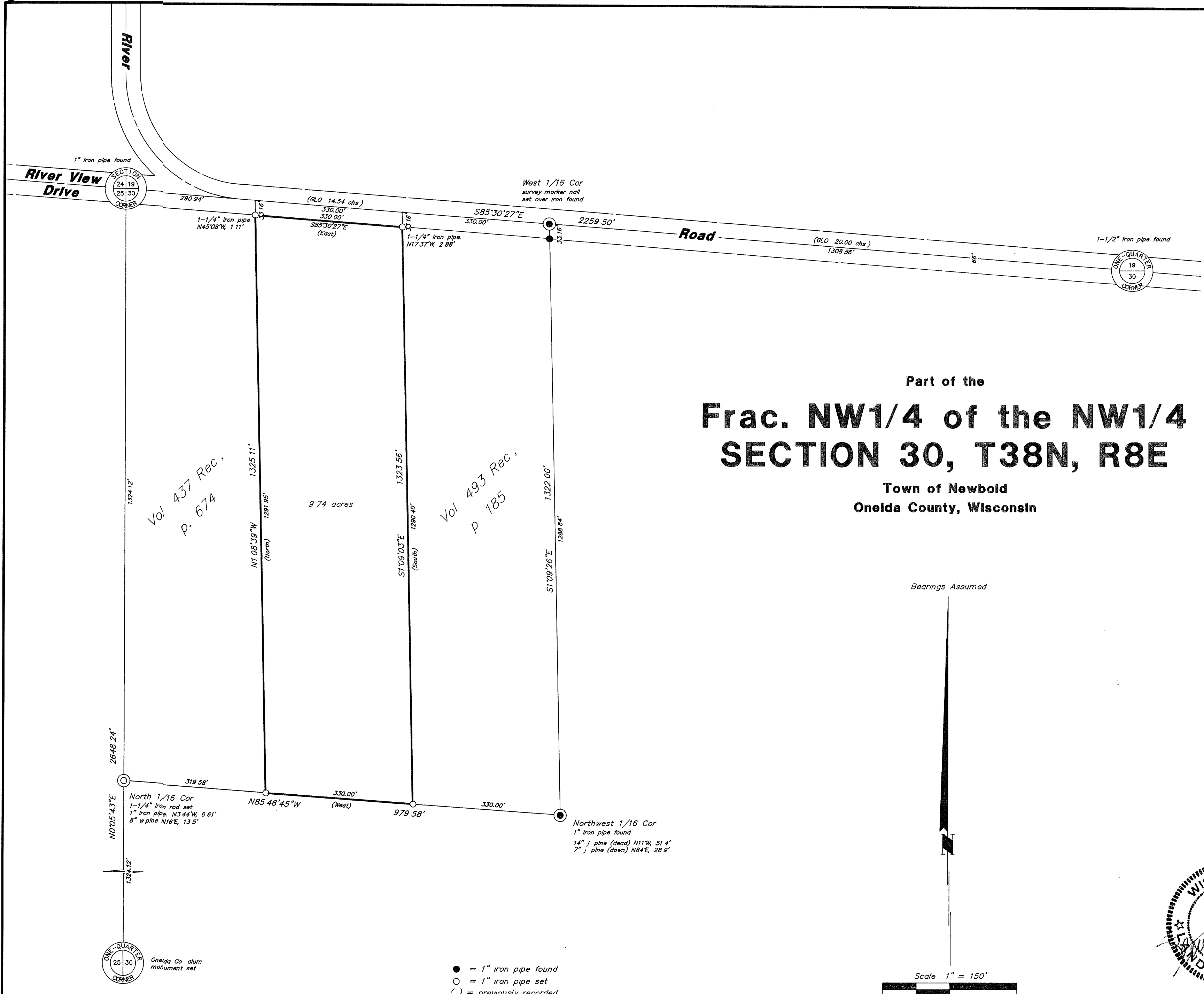
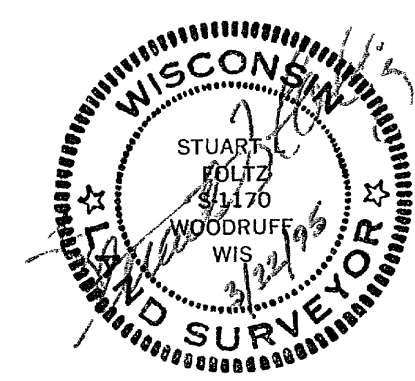
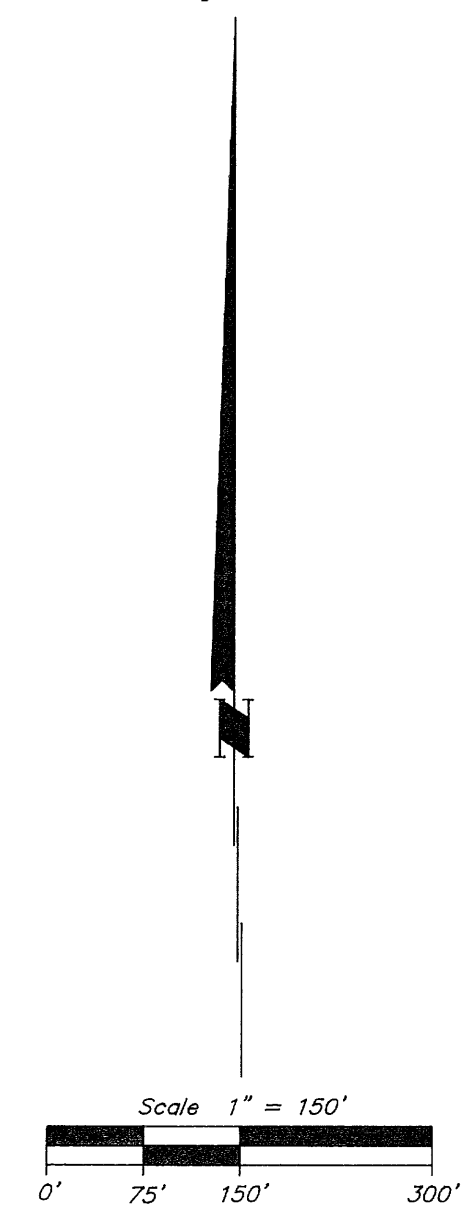


MAP # ~~B4001~~
DATE FILED APR 20 1995
BY JB
DESCRIPTION FILED
ONEIDA CO. SURVEYOR'S OFFICE



Part of the
Frac. NW1/4 of the NW1/4
SECTION 30, T38N, R8E
Town of Newbold
Oneida County, Wisconsin

Bearings Assumed



- = 1" iron pipe found
- = 1" iron pipe set
- () = previously recorded

I hereby certify that this survey and the above map were made in accordance with acceptable professional standards and that the information contained thereon is, to the best of my knowledge, information and belief, a true and accurate representation thereof. Any legal descriptions conforming to this survey have been provided on separate sheets. The above survey was made by order of Shirley Basler

Foltz and Associates, Inc.
surveyors architects engineers
8612 Highway 51 North
Minocqua, Wisconsin 54548 (715) 356-9485