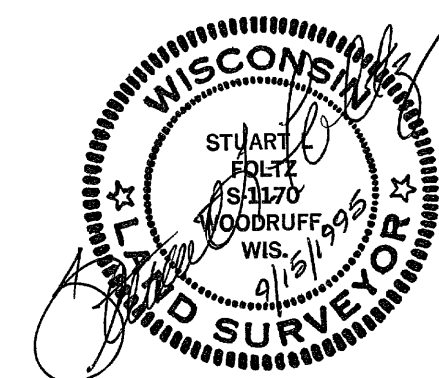


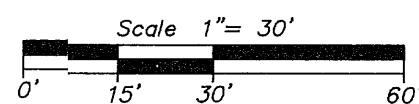
MAP # B 3 2 2 7
DATE FILED OCT 13 1995
BY [Signature]
DESCRIPTION FILED
ONEIDA CO. SURVEYOR'S OFFICE

Part of the
**SE1/4 of the SE1/4
SECTION 2, T37N, R5E**

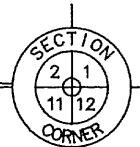
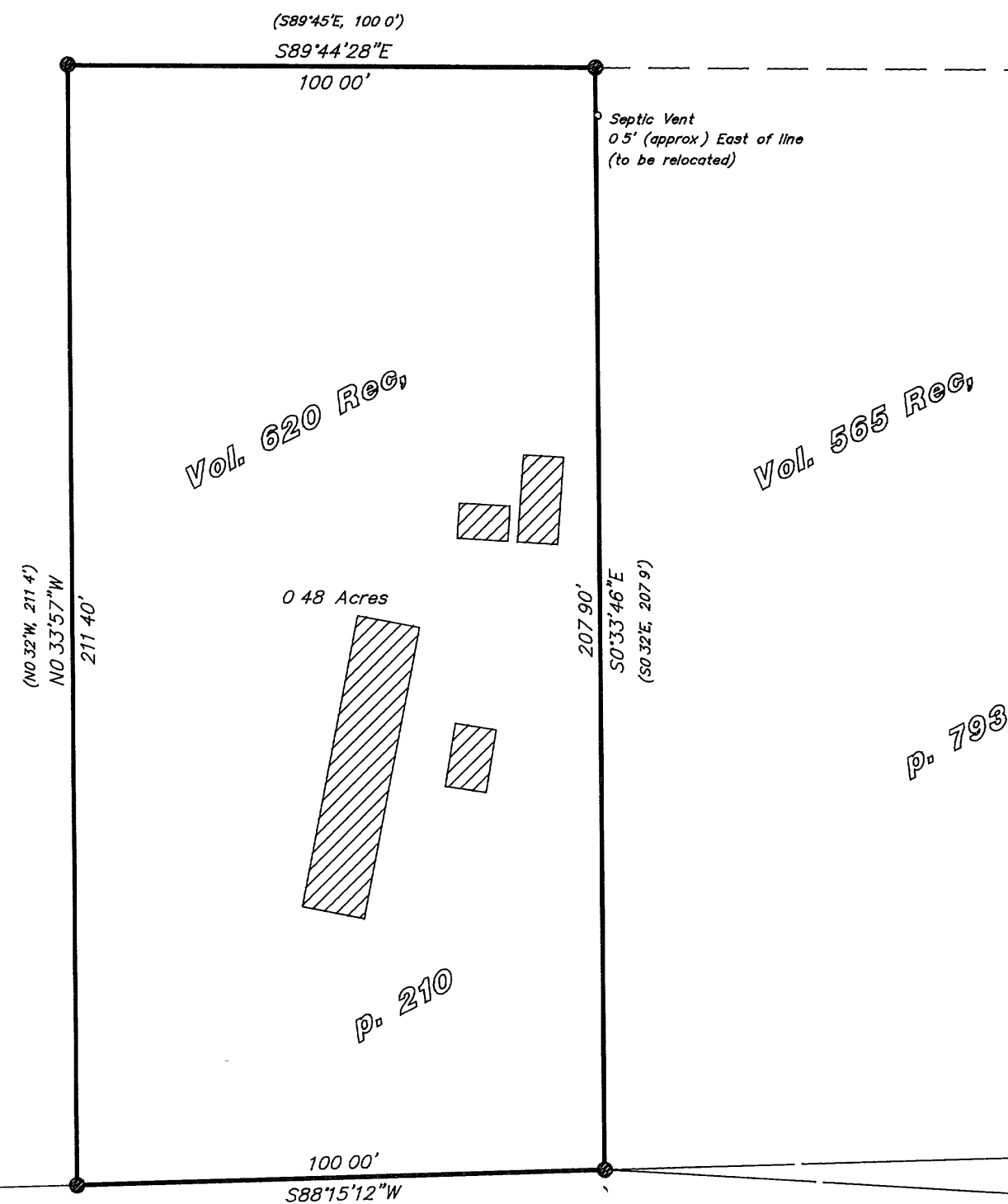
Town of Little Rice
Oneida County, Wisconsin



Bearings
Magnetic



● = 1-1/2" iron pipe found
() = previously recorded



Oneida County alum
monument found

I hereby certify that this survey and the above map
were made in accordance with acceptable professional
standards and that the information contained thereon
is, to the best of my knowledge, information and belief,
a true and accurate representation thereof
Any legal descriptions conforming to this survey have
been provided on separate sheets
The above survey was made by order of Roxanne Novotny

Foltz and Associates, Inc.

Surveyors Architects Engineers
8612 Highway 51 North, Minocqua, Wisconsin 54548
(715) 356-9485 fax (715) 356-1841

C. Winkler

16-2-375