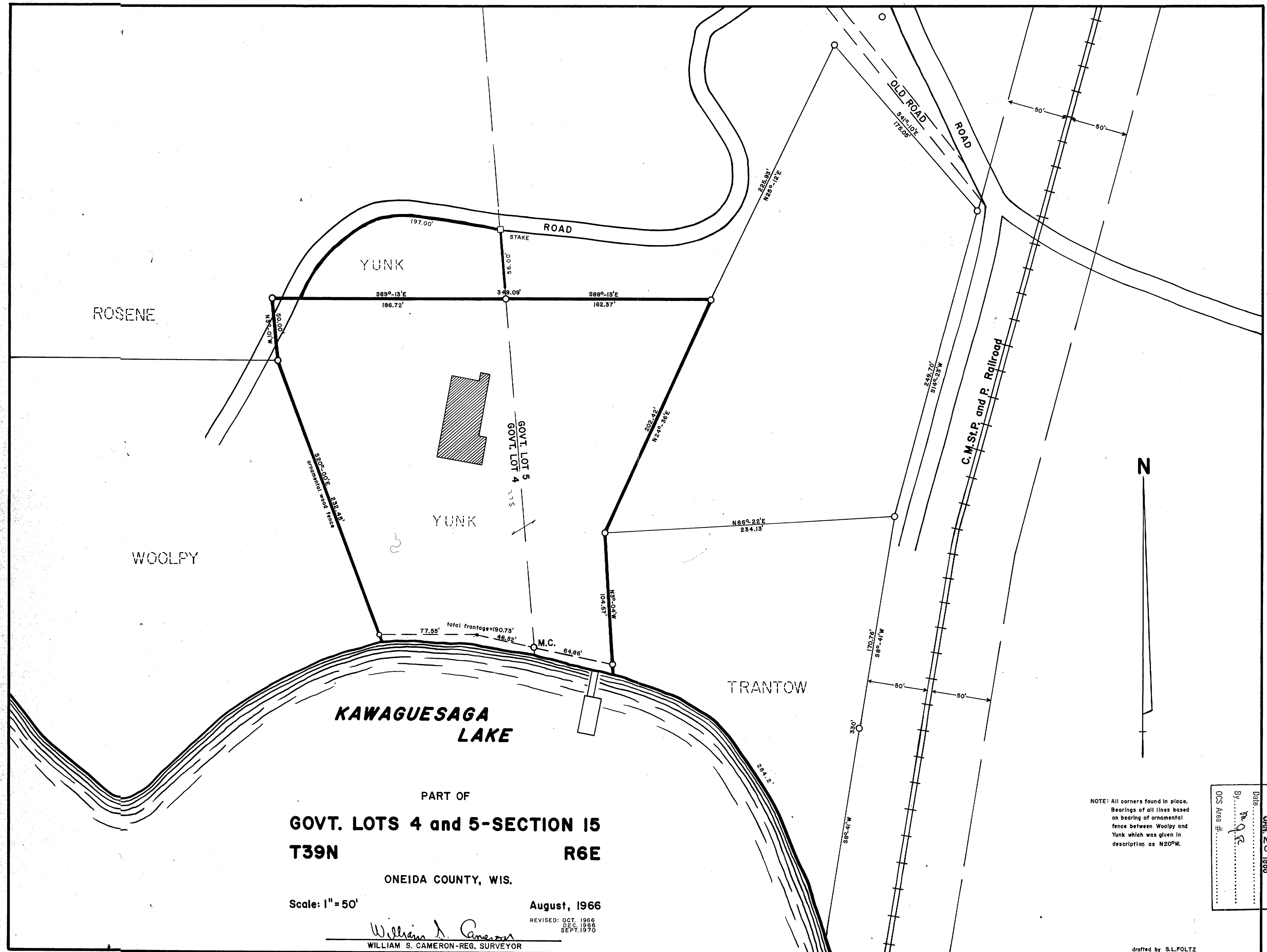


B324



NOTE: All corners found in place. Bearings of all lines based on bearing of ornamental fence between Woolpy and Yunk which was given in description as N20°W.

RECEIVED & FILED #B324
Oneida County Surveyor's Office
JAN 28 1968
Date: 10/9/66
By: W.S.C.
OCS Area #

drafted by S.L.FOLTZ

445-15-396