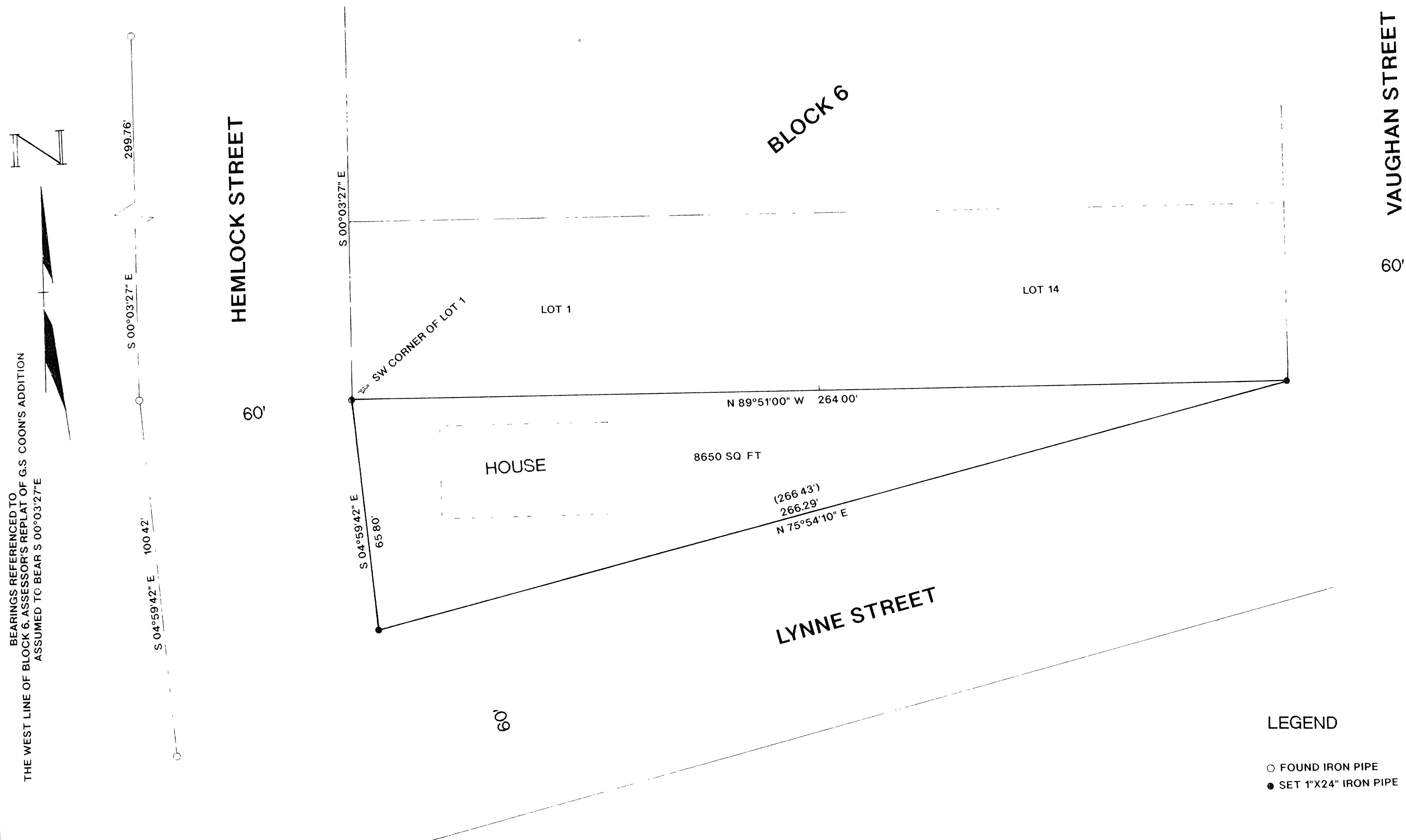


PART OF OUTLOT 'A' OF THE ASSESSOR'S REPLAT OF G.S. COON'S ADDITION TO THE CITY OF RHINELANDER

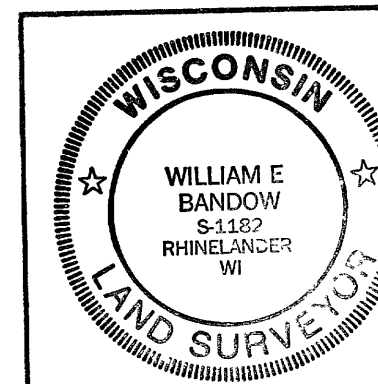


BEARINGS REFERENCED TO
THE WEST LINE OF BLOCK 6, ASSESSOR'S REPLAT OF G.S. COON'S ADDITION
ASSUMED TO BEAR S 00°03'27" E

I WILLIAM E BANDOW, HEREBY CERTIFY THAT I HAVE SURVEYED THE ABOVE PARCEL OF LAND UNDER
THE DIRECTION OF MR CHARLES LEIGHTON AND THAT THE ABOVE MAP IS A TRUE AND CORRECT REPRESENTATION
OF THE LANDS SURVEYED TO THE BEST OF MY KNOWLEDGE AND BELIEF
THAT I HAVE PROVIDED A DESCRIPTION ON A SEPARATE SHEET
THAT I HAVE COMPLIED WITH THE PROVISIONS OF AE 7 OF THE ADMINISTRATIVE CODE

William E. Bandow
WILLIAM E BANDOW

11-2-95
DATE



MAP #
DATE FILED NOV 09, 1995
BY *JB*
DESCRIPTION FILED
ONEIDA CO. SURVEYOR'S OFFICE

SURVEY FOR

CHARLES LEIGHTON

SCALE 1"=20' DATE 9/14/95 DWN BY WEB

DWG. NO
9541

GENISOT AND ASSOCIATES, INC.
RHINELANDER, WIS