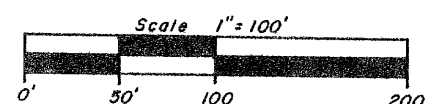


MAP # B3247  
DATE FILED DEC 01 1995  
BY *JB*  
DESCRIPTION FILED  
ONEIDA CO. SURVEYOR'S OFFICE

All of  
**GOV'T. LOT 6** 6 mqr  
**SECTION 1, T37N, R1E**  
Town of Cassian  
Oneida County, Wisconsin

Bearings  
Magnetic



- = 1-1/2" iron pipe found
- = 1" iron pipe set
- ( ) = previously recorded



2" brass-capped iron pipe  
previously recovered

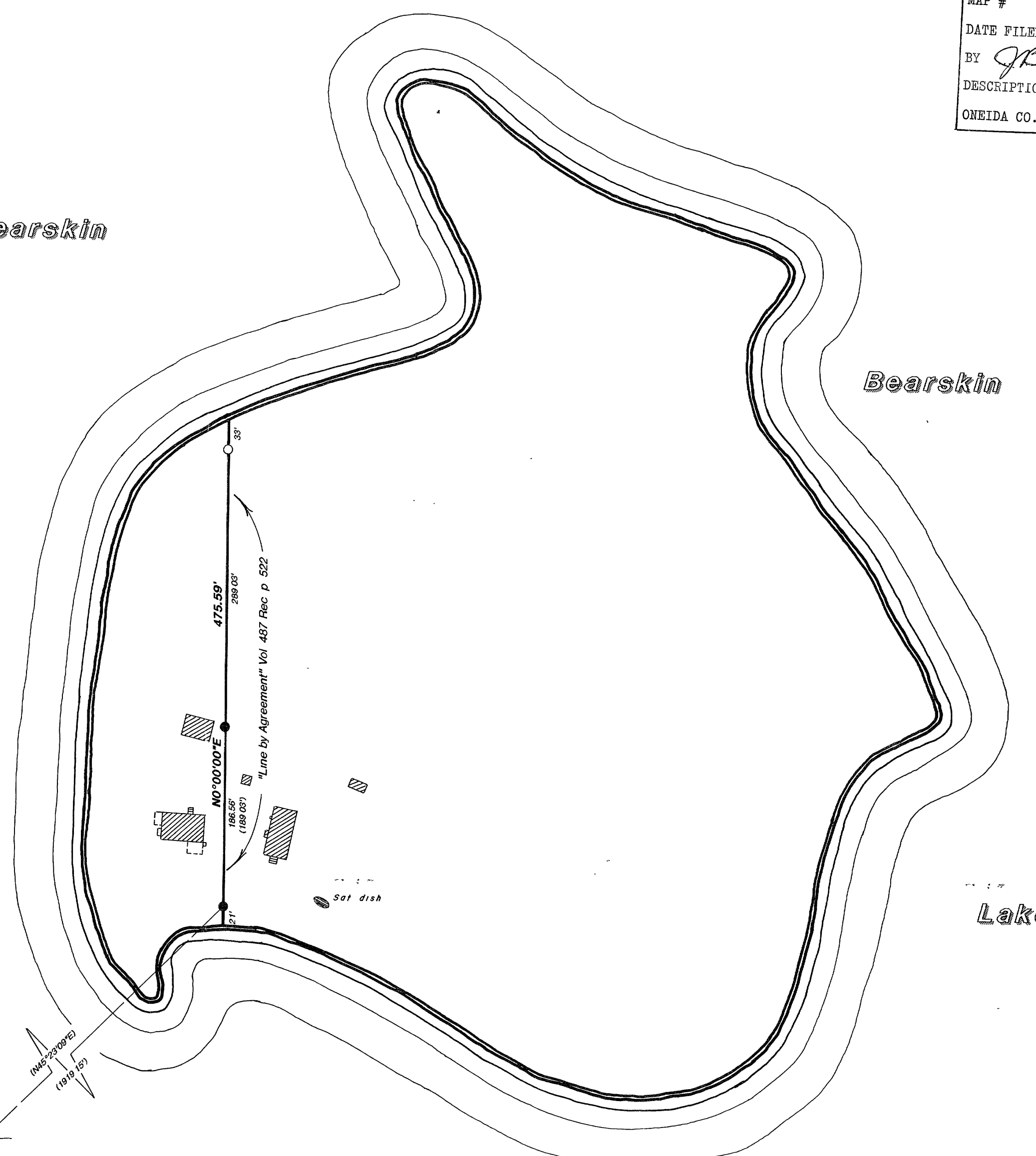
(N89°50'48"E)  
(1777.60')

1-1/2" iron pipe  
prev recovered

(N8°10'12"W)  
(177.80')

1-1/2" iron pipe  
prev recovered

(N45°23'00"E)  
(1019.87')



I hereby certify that this survey and the above map were made in accordance with acceptable professional standards and that the information contained thereon is, to the best of my knowledge, information and belief, a true and accurate representation thereof.  
Any legal descriptions conforming to this survey have been provided on separate sheets.  
The above survey was made by order of Erich Schwenker, M & I Trust Company

NOTE The boundary of the island shown hereon is approximate only, as shown on the U.S.G.S. Quadrangle Map (Hazelhurst)

B3247

Foltz and Associates, Inc.

Surveyors Architects Engineers  
8612 Highway 51 North Minocqua Wisconsin 54548

C. Winkler 247-1-376