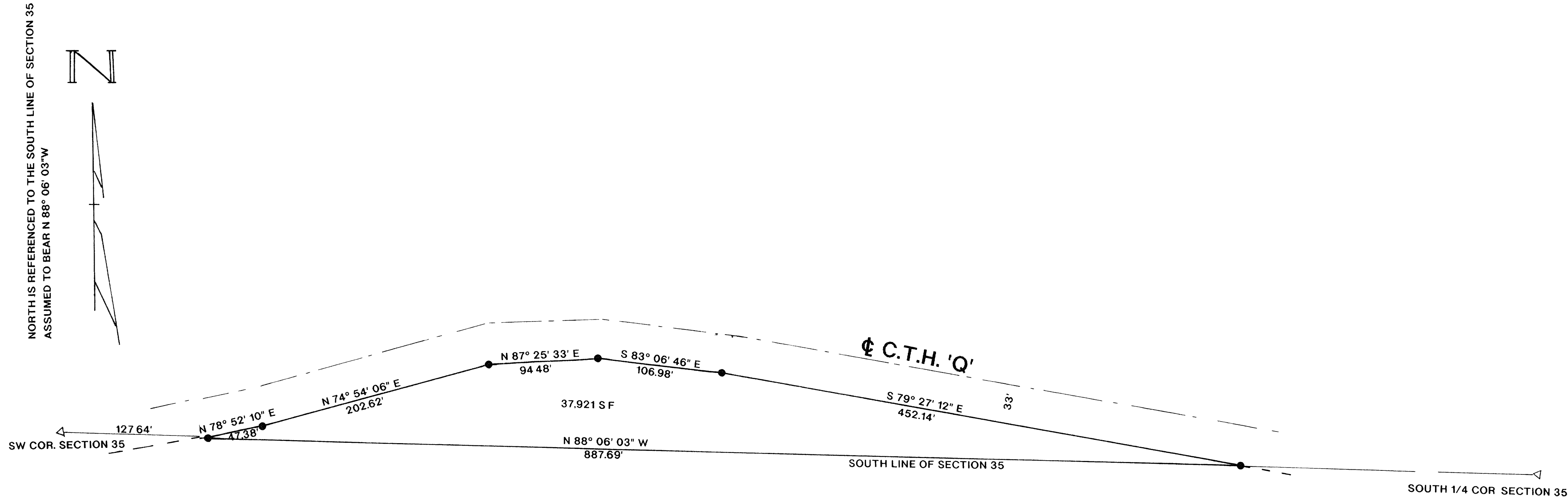


MAP # B3303
DATE FILED FEB 16 1996
BY *JB*
DESCRIPTION FILED
ONEIDA CO SURVEYOR'S OFFICE

**PART OF THE SW 1/4 OF THE SW 1/4, SECTION 35, T 35 N, R 9 E,
TOWN OF ENTERPRISE, ONEIDA COUNTY, WISCONSIN**



LEGEND

- ▷ FOUND RR SPIKE
- SET 1"X24" IRON PIPE

I, WILLIAM E. BANDOW, HEREBY CERTIFY THAT I HAVE SURVEYED THE ABOVE PARCEL OF LAND UNDER THE DIRECTION OF BUCK ECKERT AND THAT THE ABOVE MAP IS A TRUE AND CORRECT REPRESENTATION OF THE LAND SURVEYED TO THE BEST OF MY KNOWLEDGE AND BELIEF, THAT I HAVE PROVIDED A DESCRIPTION OF THE PARCEL ON A SEPARATE SHEET. THAT I HAVE COMPLIED WITH THE PROVISIONS OF AE 7 OF THE WISCONSIN ADMINISTRATIVE CODE

SURVEYOR'S NOTE
THE SE CORNER OF THE SW 1/4-SW 1/4 IS ON RECORD BY MILO STEPHAN IT IS 32.80' NORTH OF THE SECTION LINE

William E. Bandow 2-13-96
WILLIAM E. BANDOW DATE

	SURVEY FOR	
	BUCK ECKERT	
	SCALE 1"=60'	DATE 8/10/95 DWN BY WEB
DWG. NO.	GENISOT AND ASSOCIATES, INC.	
9516	RHINELANDER, WIS	