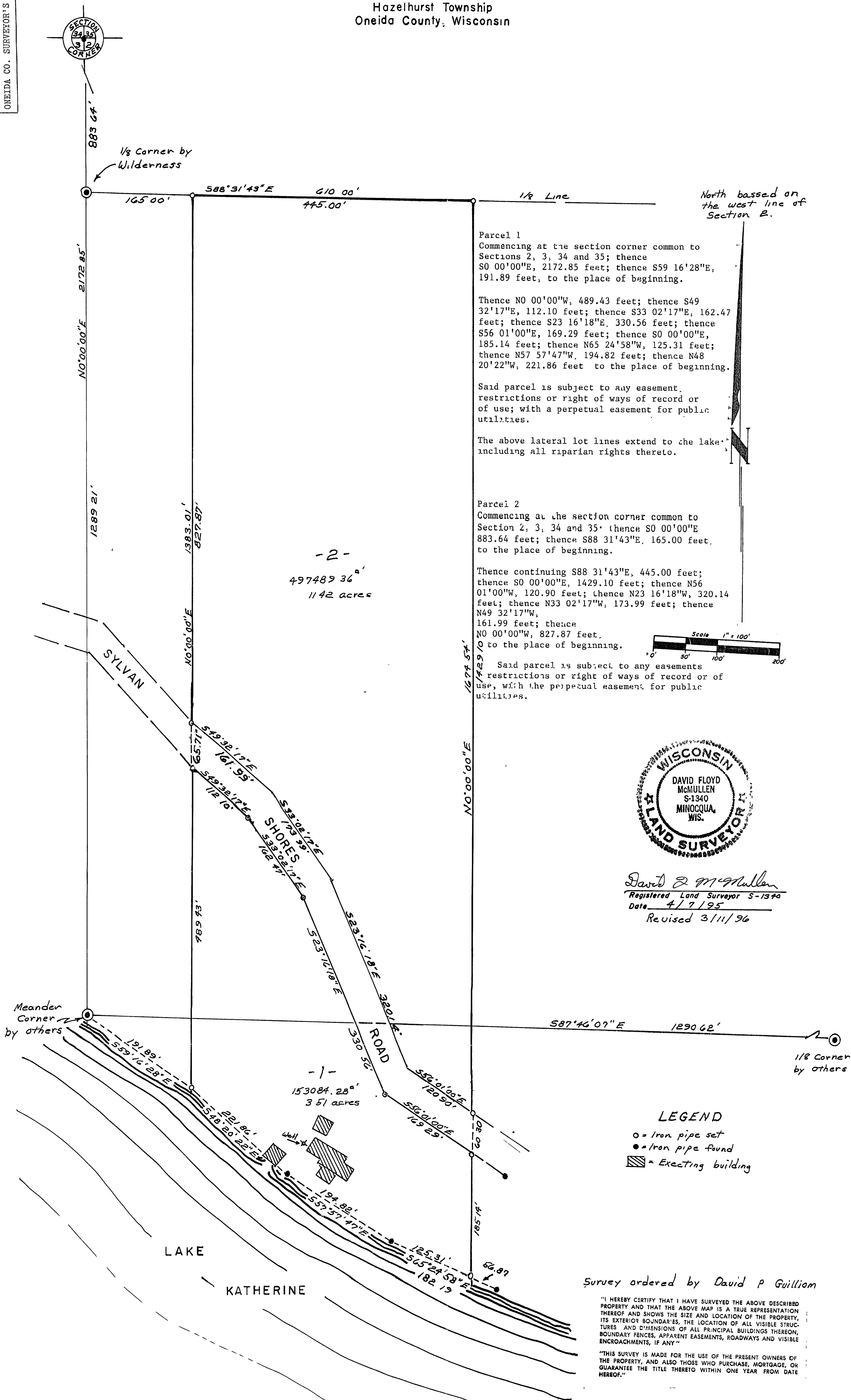


Part of
GOV'T LOT 6
SECTION 2, T38N, R6 E

Hazelhurst Township
Oneida County, Wisconsin

MAP # 33328
DATE FILED APR 25 1996
BY [Signature]
DESCRIPTION FILED
ONEIDA CO. SURVEYOR'S OFFICE



B 3 3 2 8

B 3 3 2 8