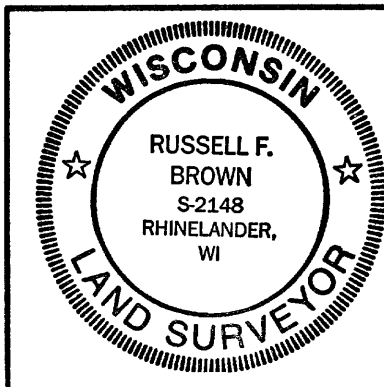
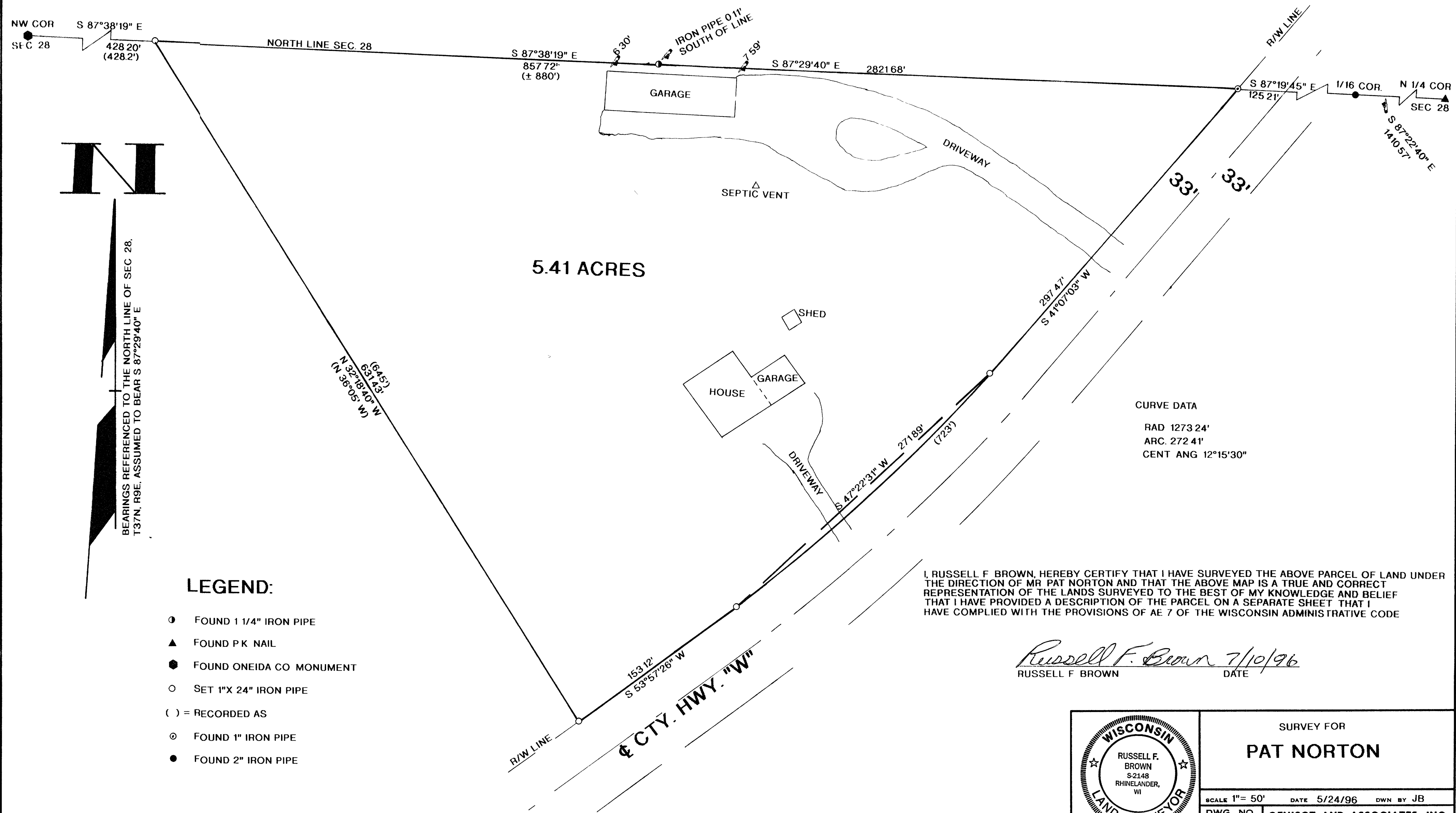


LOCATED IN THE NW 1/4 OF THE NW 1/4, SECTION 28,
T37N, R9E, TOWN OF PINE LAKE, ONEIDA CO. WI.

MAP # B 3 4 1 4
DATE FILED JUL 19 1996
BY *JB*
DESCRIPTION FILED
ONEIDA CO. SURVEYOR'S OFFICE



SURVEY FOR
PAT NORTON

SCALE 1" = 50' DATE 5/24/96 DWN BY JB

DWG. NO 9616

GENISOT AND ASSOCIATES, INC.
RHINELANDER, WIS