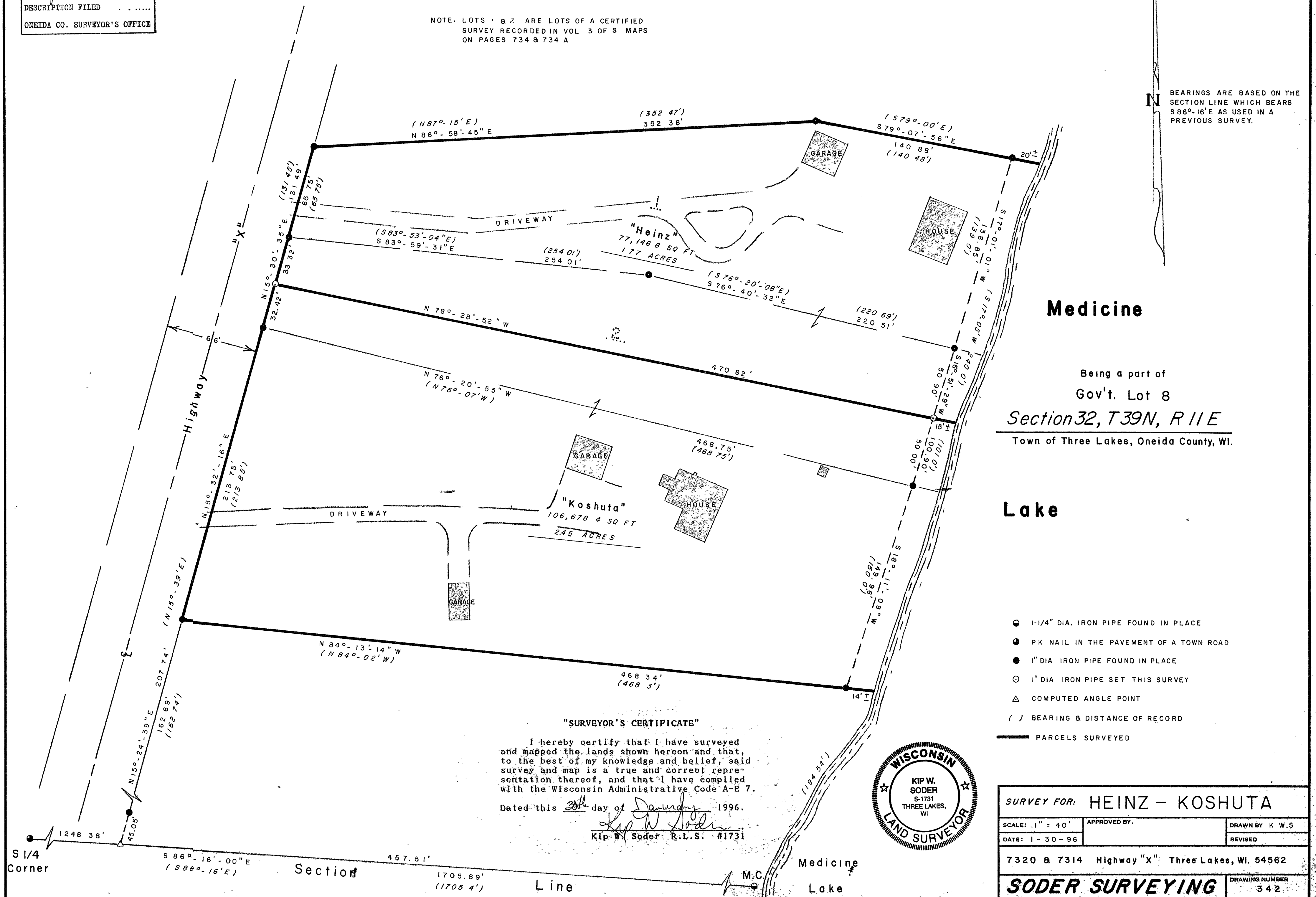


MAP # **B3447**
 DATE FILED **AUG 23 1996**
 BY *[Signature]*
 DESCRIPTION FILED
 ONEIDA CO. SURVEYOR'S OFFICE

NOTE DESCRIPTIONS ARE PROVIDED ON
SEPARATE SHEETS

NOTE. LOTS 1 & 2 ARE LOTS OF A CERTIFIED
SURVEY RECORDED IN VOL 3 OF S MAPS
ON PAGES 734 & 734 A

BEARINGS ARE BASED ON THE
SECTION LINE WHICH BEARS
S 86°-16'E AS USED IN A
PREVIOUS SURVEY.



Medicine

Being a part of

Gov't. Lot 8

Section 32, T39N, R11E

Town of Three Lakes, Oneida County, WI.

Lake

SURVEY FOR: HEINZ - KOSHUTA

SCALE: 1" = 40'

APPROVED BY:

DRAWN BY K.W.S.

DATE: 1-30-96

REVISED

7320 & 7314 Highway "X" Three Lakes, WI. 54562

SODER SURVEYING

DRAWING NUMBER
342