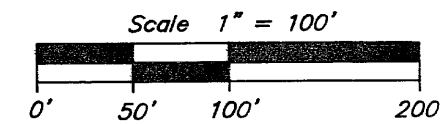
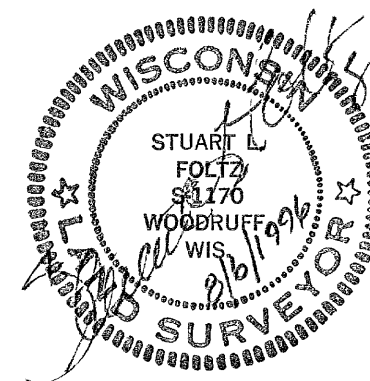
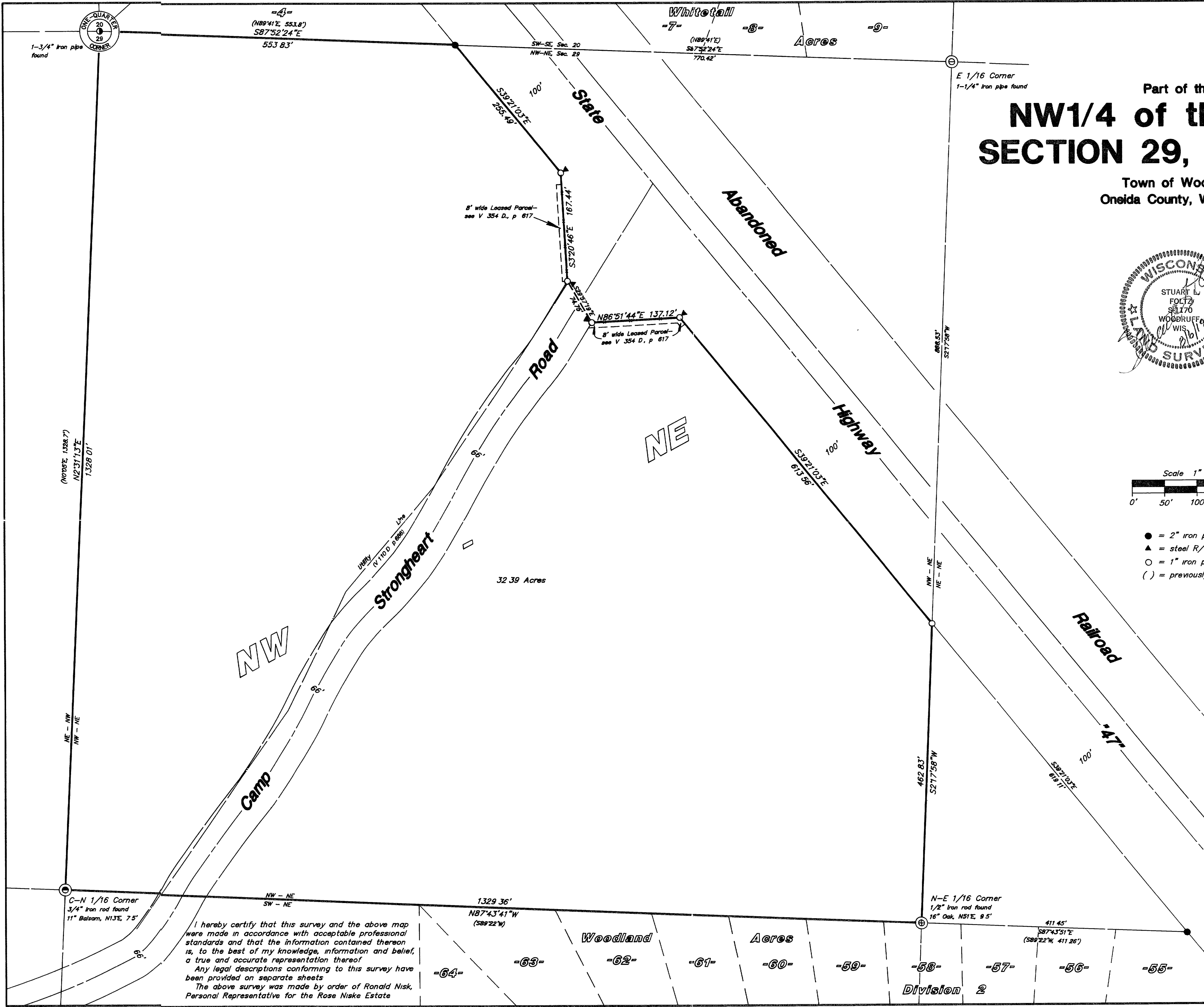
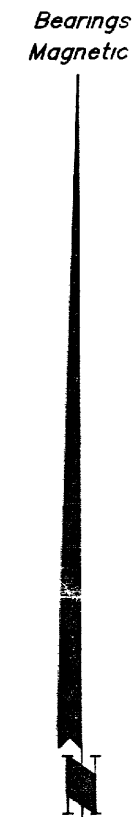


MAP # B3460
DATE FILED AUG 23 1996
BY JB
DESCRIPTION FILED
ONEIDA CO. SURVEYOR'S OFFICE

Part of the
NW1/4 of the NE1/4
SECTION 29, T39N, R7E
Town of Woodruff
Oneida County, Wisconsin



- = 2" iron pipe found
- ▲ = steel R/W post
- = 1" iron pipe set
- () = previously recorded



I hereby certify that this survey and the above map were made in accordance with acceptable professional standards and that the information contained thereon is, to the best of my knowledge, information and belief, a true and accurate representation thereof. Any legal descriptions conforming to this survey have been provided on separate sheets. The above survey was made by order of Ronald Nisk, Personal Representative for the Rose Niske Estate

Foltz and Associates, Inc.
Surveyors Architects Engineers
8612 Highway 51 North, Minocqua, Wisconsin 54548
(715) 356-9485 fax (715) 356-1841
C. Winkler 2-29-397