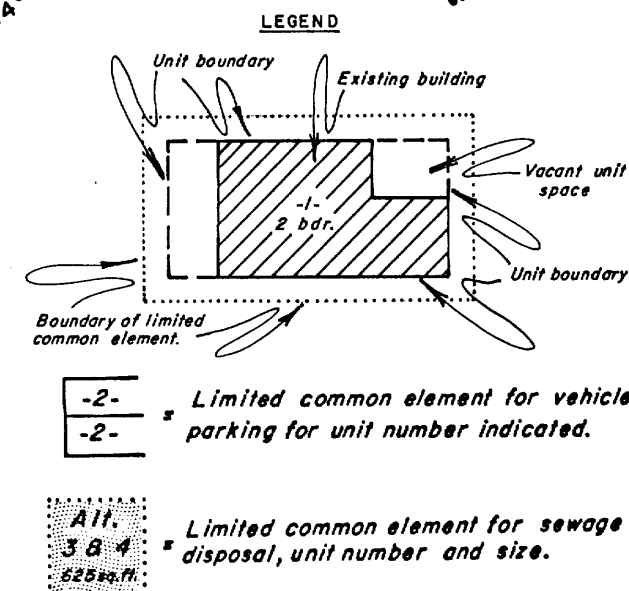
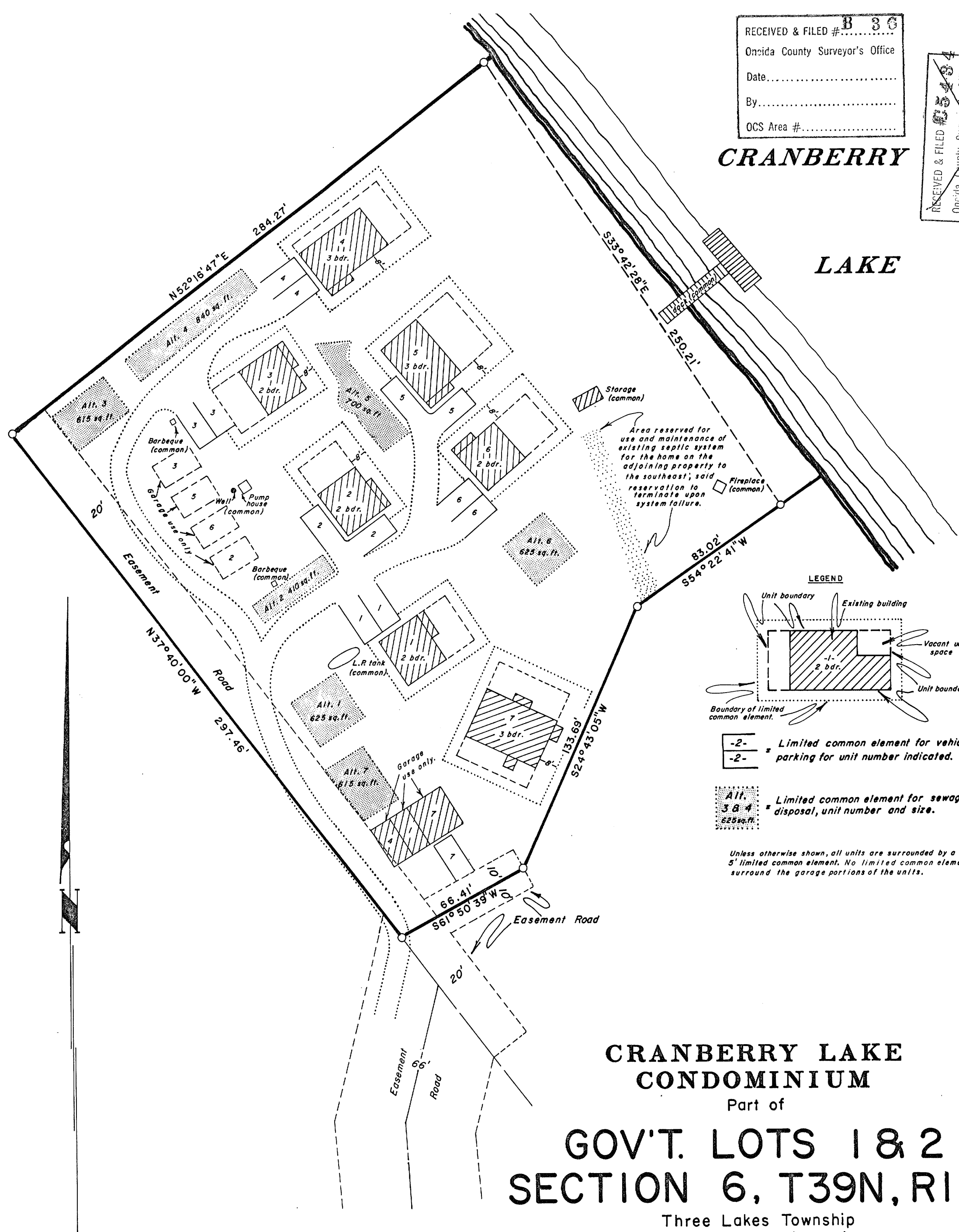


RECEIVED & FILED # **B 36**
Oneida County Surveyor's Office
Date.....
By.....
OCS Area #.....

RECEIVED & FILED # **B 36**
Oneida County Surveyor's Office
Date **15 Feb 82**
By **D. J. Foltz**
OCS Area # **187-6-3911**

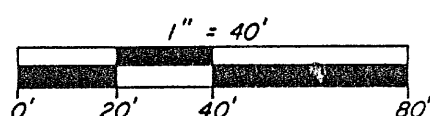
CRANBERRY

LAKE



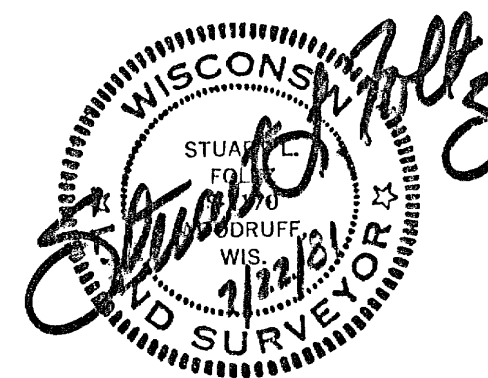
Unless otherwise shown, all units are surrounded by a 5' limited common element. No limited common elements surround the garage portions of the units.

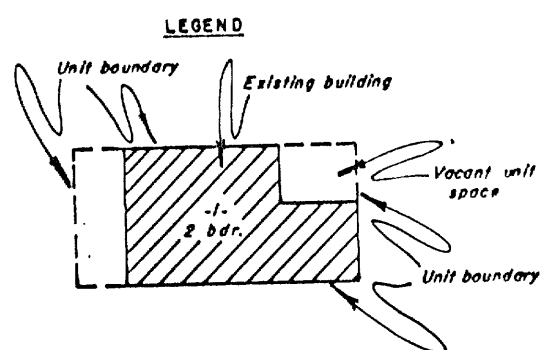
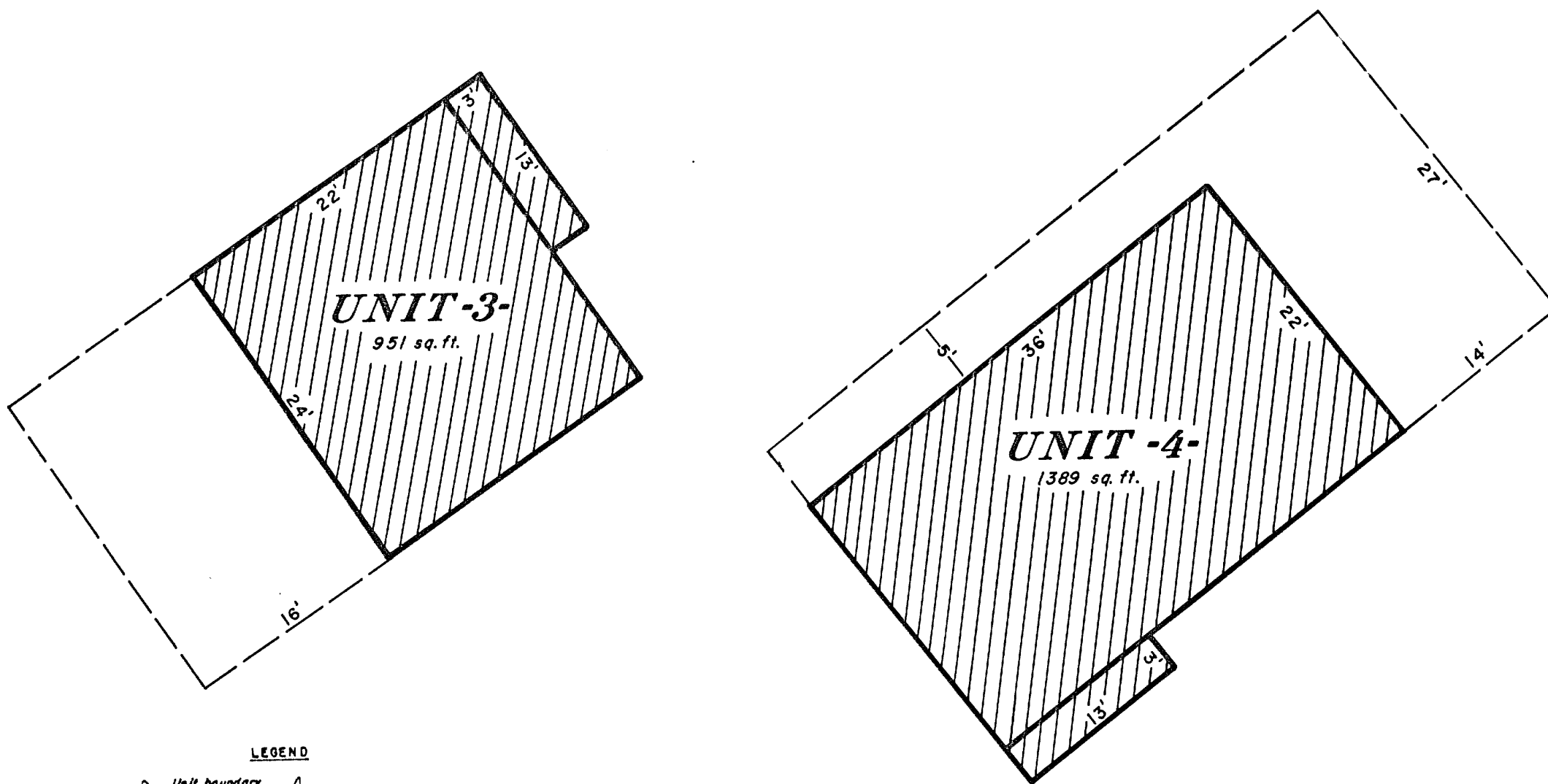
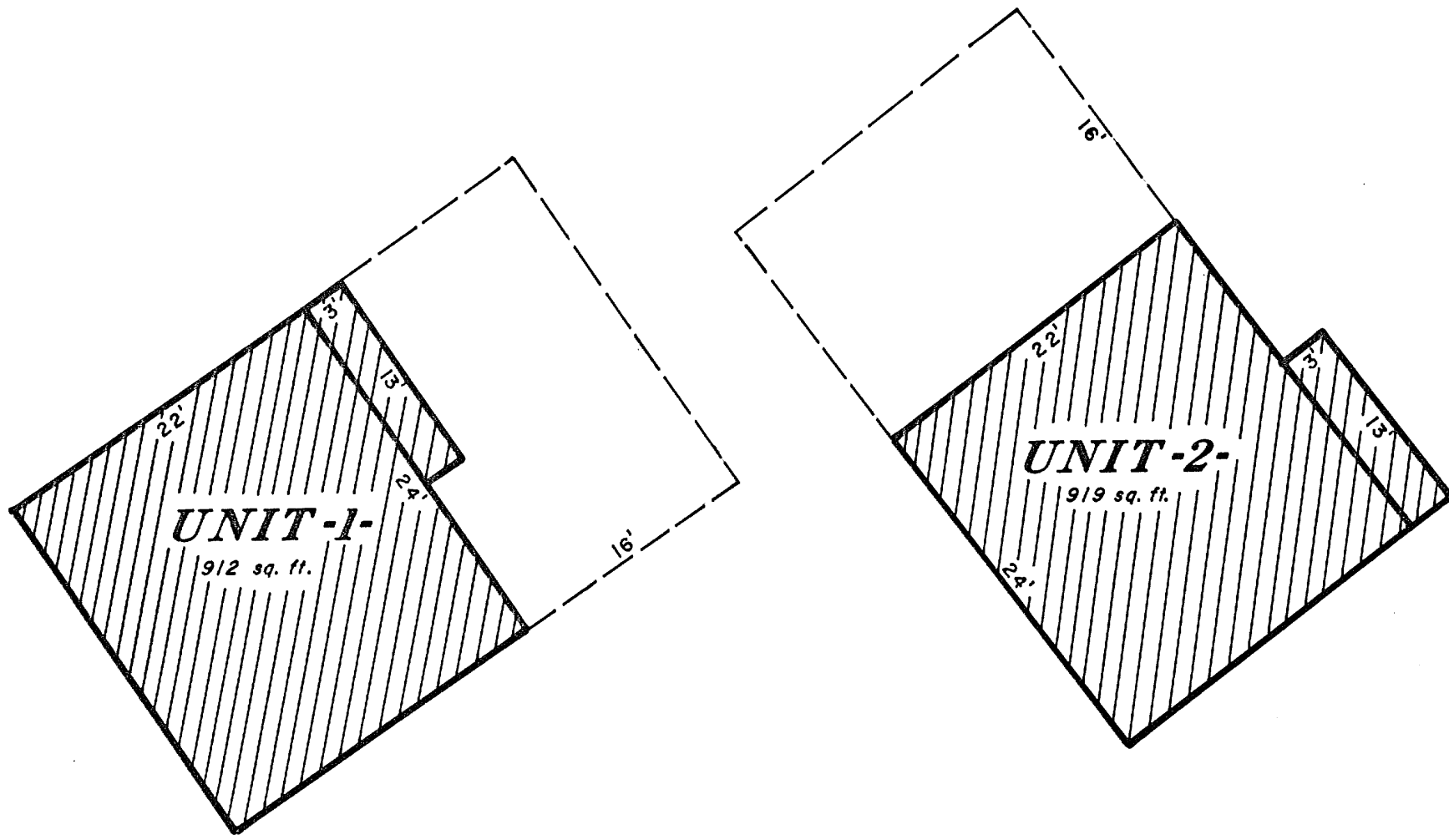
**CRANBERRY LAKE
CONDOMINIUM**
Part of
**GOV'T. LOTS 1 & 2
SECTION 6, T39N, R11E**
Three Lakes Township
Oneida County, Wisconsin



I, Stuart L. Foltz, Registered Land Surveyor S-1170 hereby certify that this plot, consisting of 3 sheets, is a correct representation of Cranberry Lake Condominium; that the identification of each unit, the floor area of each existing building, and the location of the common elements can be determined from sheet 1 of this plot; and that diagrammatic floor plans of each unit and its approximate dimensions are shown on sheets 2 through 4 of this plot.

inman·foltz and associates, inc.
engineers surveyors architects
p.o. box u minocqua, wisconsin 54548
(715) 358-9465

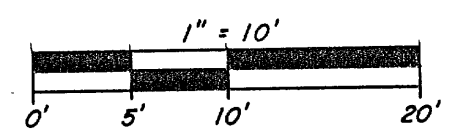




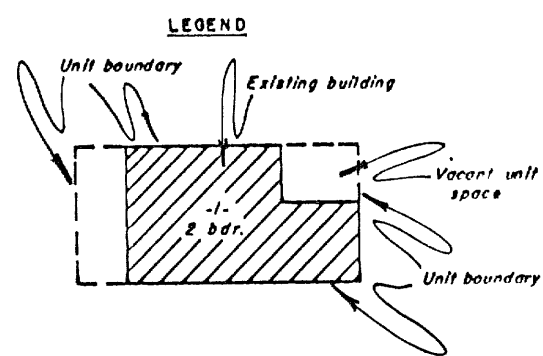
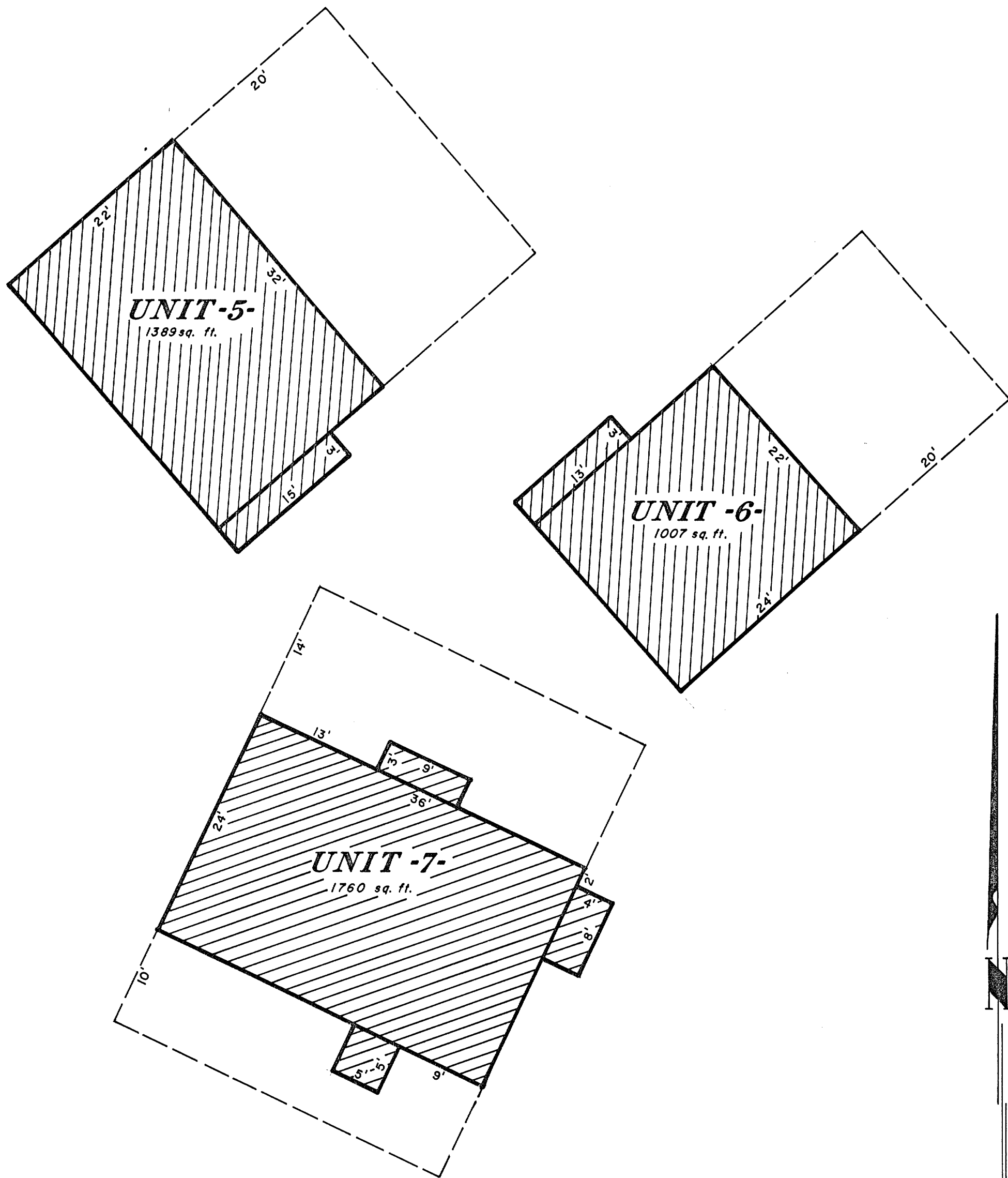
CRANBERRY LAKE CONDOMINIUM

Three Lakes Township
Oneida County, Wisconsin

Floor Plans - Dwelling portions of Units 1 thru 4

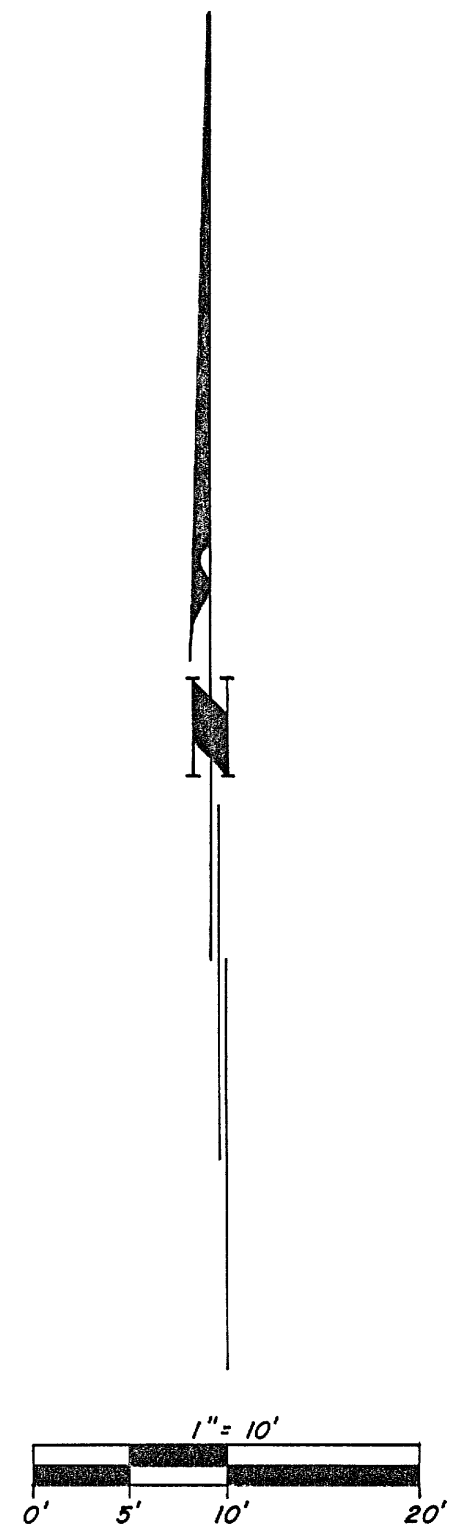


inman·foltz and associates, inc.
engineers surveyors architects
p.o. box u minocque, wisconsin 54548
(715) 356-9485 Sheet 2 of 4 sheets



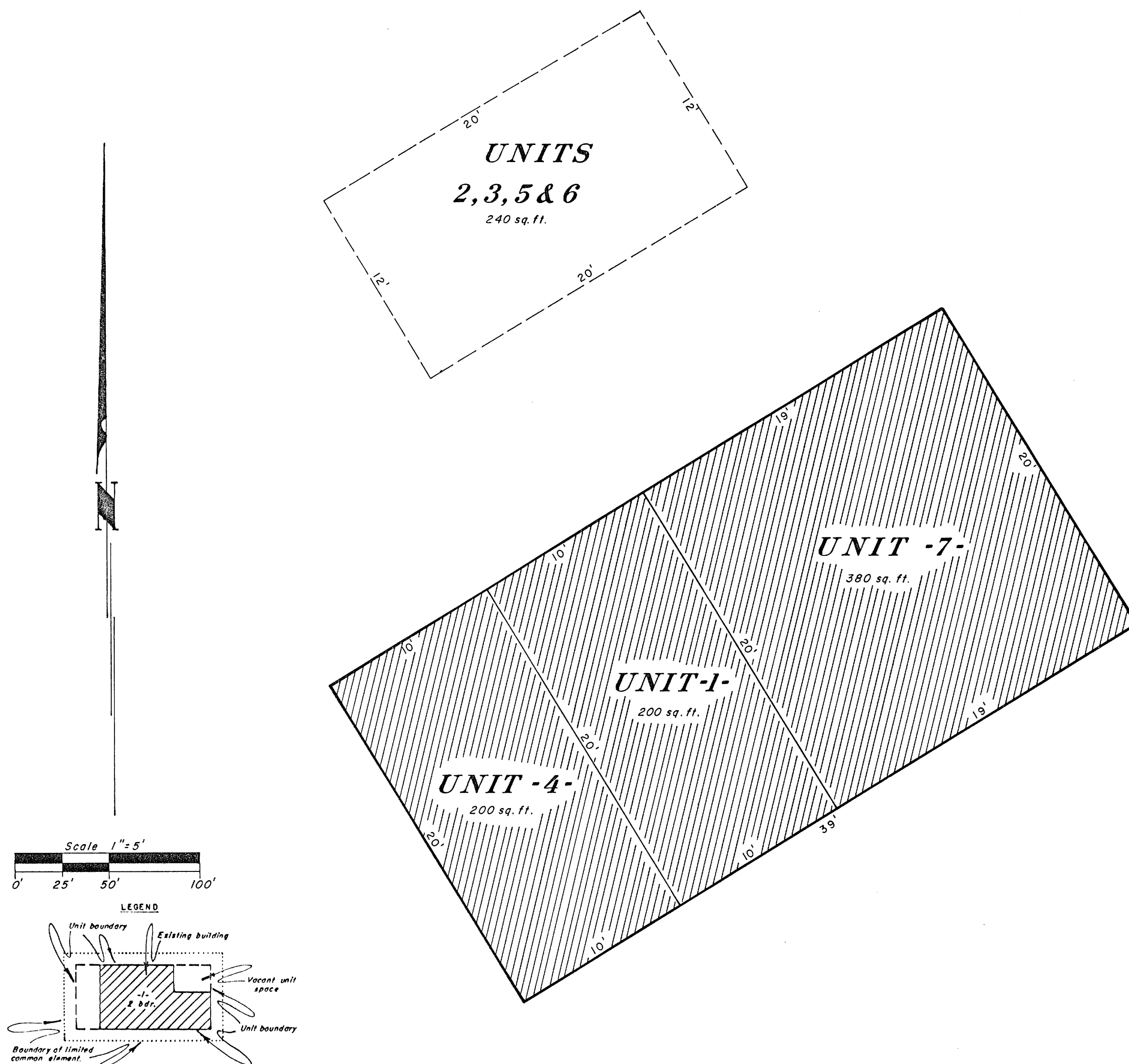
CRANBERRY LAKE CONDOMINIUM

Three Lakes Township
Oneida County, Wisconsin



Floor Plans - Dwelling portions of Units 5 thru 7

inman·foltz and associates, inc.
engineers surveyors architects
p.o. box u minocqua, wisconsin 54548
(715) 356-8485 *Sheet 3 of 4 sheets*



CRANBERRY LAKE CONDOMINIUM

Three Lakes Township
Oneida County, Wisconsin

Floor Plans - Garage portions of Units 1 thru 7

inman·foltz and associates, inc.
engineers surveyors architects
p.o. box 11 minocqua, wisconsin 54548
(715) 358-9485

Sheet 4 of 4 sheets