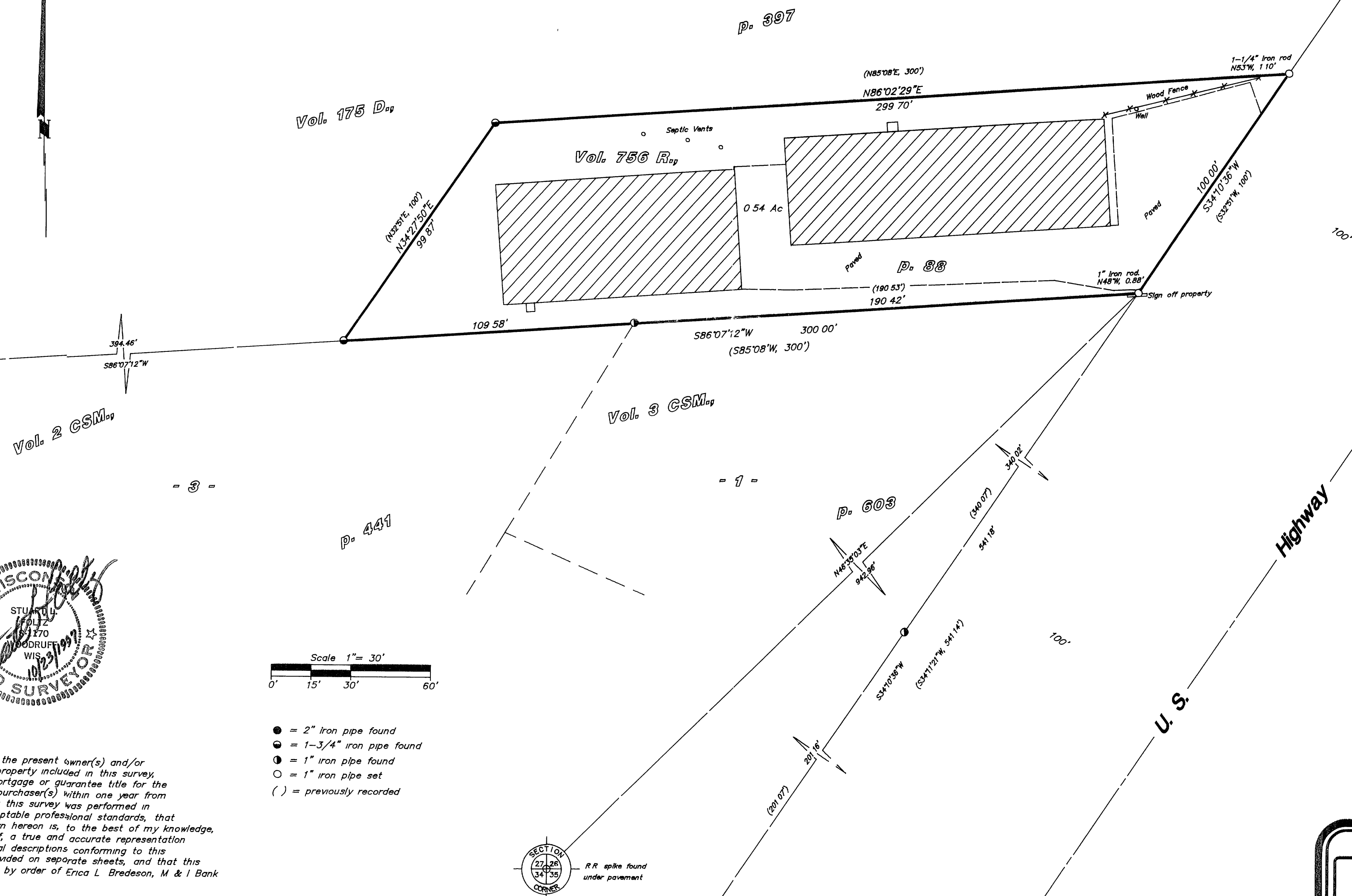


Part of the  
**SW1/4 of the SW1/4**  
**SECTION 26, T39N, R6E**

Town of Minocqua  
 Oneida County, Wisconsin

Bearings  
 Assumed



MAP # B3771  
 DATE FILED DEC 03 1997  
 BY *JB*  
 DESCRIPTION FILED  
 ONEIDA CO SURVEYOR'S OFFICE

**Foltz and Associates, Inc.**

Surveyors Architects Engineers  
 8612 Highway 51 North, Minocqua, Wisconsin 54548  
 (715) 356-9485 fax (715) 356-1841

K McCullough 13-26-396