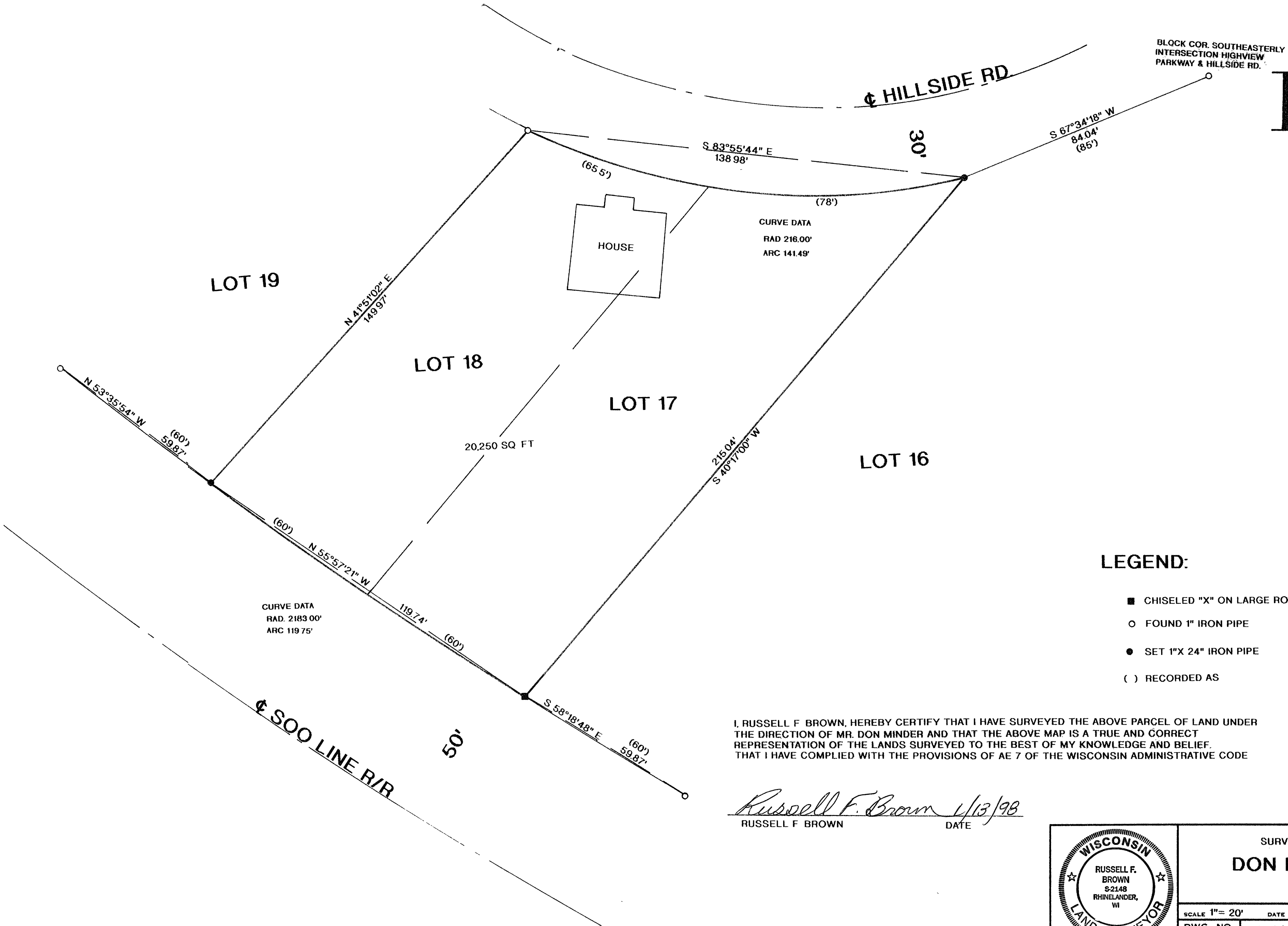


MAP #	B 8857
DATE FILED	FEB 02 1998
BY	
DESCRIPTION FILED	
ONEIDA CO. SURVEYOR'S OFFICE	

LOT 17 & 18, BLOCK "H" HIGHLAND VIEW ADD.
TO THE CITY OF RHINELANDER, ONEIDA CO. WI.



	SURVEY FOR DON MINDER	
	SCALE 1" = 20'	DATE 10/22/97 DWN BY JB
	DWG. NO. 9802	GENISOT AND ASSOCIATES, INC. RHINELANDER, WIS.