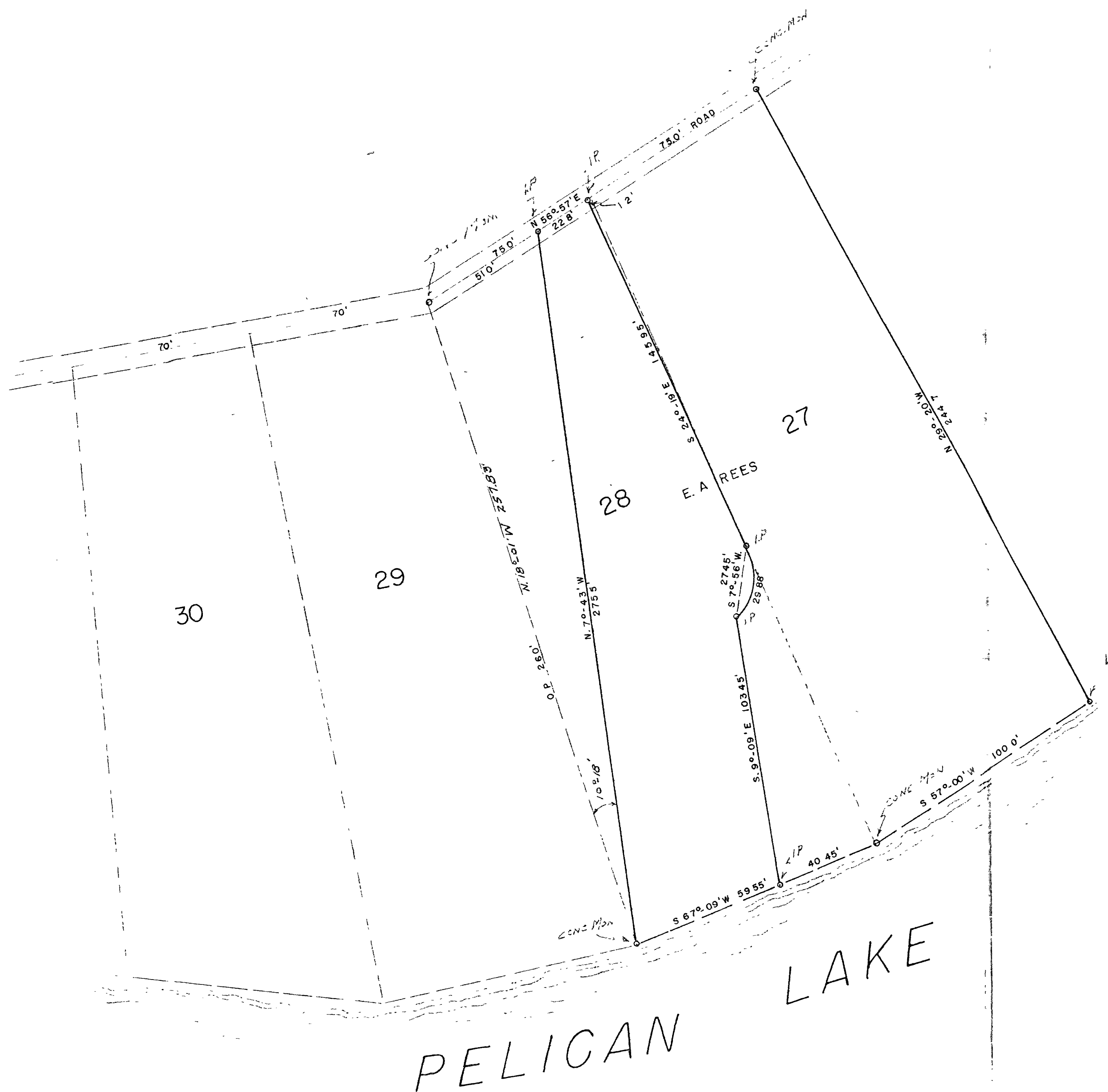


MAP # B 3 8 7 1
DATE FILED MAR 3 1 1998
BY *gib*
DESCRIPTION FILED
ONEIDA CO SURVEYOR'S OFFICE



PART OF LOT 28 OF SABINOIS ORIGINAL
PLAT OF SABINOIS POINT AS RECORDED
IN VOL. 5, PAGE 7, OFFICE OF REGISTER
OF DEEDS, ONEIDA COUNTY, WIS. SITUATED
IN GOV'T. LOT 2, SEC. 13, T. 35 N., R. 10 E.

Vol. 237 Page 569

SURVEY
FOR
E. A. REES

SCALE 1" = 30' DATE APR. 21, 1980 DWN BY F. R. W.

DWG. NO.
2565

GENISOT ENGINEERING CO.
RHINELANDER, WIS 53071

B387